

RAIL & TOUR COLLECTION

CHINA | INDIA | JAPAN | MALAYSIA | SINGAPORE | SOUTH KOREA
TAIWAN | THAILAND | TIBET | UZBEKISTAN | VIETNAM

2026 - 2027



OUR AWARD-WINNING COLLECTION OF ESCORTED TOURS

The winner of 'Best Specialist Tour Operator' 15 years running – Globe Travel Awards

The most prestigious accolade in the travel industry

WELCOME

It brings me great joy to welcome you to our Rail & Tour Collection. Be it by ultramodern bullet or vintage ‘toy’, train journeys always add an extra level of immersion to your adventures. The opportunity to sit back and watch the world go by, to enjoy even more of a country’s most scenic landscapes, riding the rails brings with it an inherent romance and endless possibilities.

For over two decades, I’ve had the privilege of sharing the glorious views, vibrant cultures and warm hospitality of the world’s most wonderful destinations with travellers from across the globe. Every journey we craft is designed with care, ensuring you experience the very heart and soul of each incredible nation. Whether you want to traverse Japan by shinkansen, clatter through India’s scenic mountains on a charming toy train or ride across the ‘Roof of the World’ on the world’s highest train tracks, then all aboard; your adventure awaits!

Let us guide you on an unforgettable adventure – one that will inspire, enlighten, and leave you with memories to last a lifetime.

Warmest regards,

Wendy Wu

Founder, Wendy Wu Tours



CONTENTS

YOUR GUIDE TO WENDY WU TOURS

4-11

Wendy Wu Tours	4	Cultural Encounters	8
We Take Care of Everything	6	Tour Styles Explained	10

JAPAN, TAIWAN & SOUTH KOREA TOURS

12-25

Jewels of Japan	CLASSIC	11 days	14	Taiwan by Rail – NEW	CLASSIC	9 days	22
Essence of South Korea & Japan	CLASSIC	16 days	16	Classic South Korea	SHORT STAY	5 days	24
Journey through Japan	CLASSIC	14 days	18	Taiwan Express	SHORT STAY	8 days	25
Japan by Rail	CLASSIC	21 days	20				

CHINA & CENTRAL ASIA TOURS

26-41

In Pursuit of Pandas	CLASSIC	10 days	28	Silk Road Explorer	GO BEYOND	27 days	36
Majestic Yangtze	CLASSIC	14 days	30	Ultimate China	CLASSIC	27 days	38
Tibetan Railroad	GO BEYOND	17 days	32	Ultimate Uzbekistan	CLASSIC	12 days	40
China by Rail	CLASSIC	22 days	34				

SOUTHEAST ASIA TOURS

42-47

Vietnam & the Reunification Express	CLASSIC	14 days	44	Singapore to Bangkok by Rail	CLASSIC	18 days	46
---	---------	---------	----	------------------------------------	---------	---------	----

INDIA TOURS

48-51

India by Rail	CLASSIC	15 days	50
---------------------	---------	---------	----

SHORT STAYS & STOPOVERS

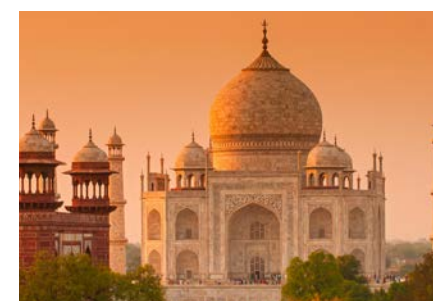
52-61

Hong Kong Stopovers	54	Singapore Short Stay	59
Dubai Stopovers	56	Bangkok Short Stay	60
Beijing Short Stay	58	Hua Hin Short Stay	60
Taipei Short Stay	58	Phuket Beach Short Stay	61
Seoul Short Stay	59	Goa Beach Short Stay	61

MORE INFORMATION

62-71

Tailormade Tours	62	Airlines	67
Tailormade Rail Journeys	64	Wendy Wu Tours Loyalty Club	68
Hotels	66	Booking Conditions	69





WENDY WU TOURS

EXPERIENCE THE EXTRAORDINARY

Wendy Wu Tours is the UK's leading touring specialist, offering exceptional fully-inclusive tours to over 40 countries worldwide.

Our meticulously planned itineraries are fully escorted every step of the way and include everything you need for an unforgettable holiday.



We Take Care of Everything

We offer lots of inclusions on each and every tour, including your international flights, hotels, meals, guided touring, transportation, transfers – and even your visa. All you need to do is get to the airport!



Trusted for over 25 years

Since Wendy herself led our very first tour, we have grown into the UK's number one tour specialist with an unrivalled expertise in immersive, inclusive touring. Once you've experienced a country with Wendy Wu Tours, you'll never want to travel another way!



Award-winning Service

Voted for by the public, our partners and respected travel experts, Wendy Wu Tours has been the recipient of over 40 major awards in our history, including 'Best Long Haul Specialist Operator' 15 years running at the prestigious Globe Travel Awards.



Outstanding Tour Guides

Our National Escorts are the stars of the show. Born and raised in the country you are travelling in and accompanying you every step of the way, it is their unrivalled knowledge, passion and expertise that takes a Wendy Wu tour from excellent to extraordinary.



Authentic Experiences

All of our tours have fascinating cultural experiences included in the price. Be it learning a local craft, practising an old tradition or dining with locals, you'll get under the skin of our destinations and their cultures and have great fun at the same time.



Your Loyalty Matters

Entry into Wendy's Club, our generous loyalty scheme, opens the door to significant savings every time you book, plus exclusive offers and news updates before anyone else. See www.wendywutours.co.uk/about-us/loyalty/ for more details.



We Take Care of Everything

FULLY INCLUSIVE TOURING WITH WENDY WU TOURS

At Wendy Wu Tours we believe that everything you need to enjoy the holiday of a lifetime should be included in the price of your tour.

Take a look at what's included in all of our Classic Tours.

All Your Flights

All our tour prices include return international economy class flights from London and any domestic flights you may need whilst on tour. We can also help you with departures from your local airport, often for little or no extra cost.

We only work with reputable scheduled airlines and of course all your pre-paid taxes and luggage is included in the price. We believe that your flights are an essential part of your holiday experience, and so our carefully selected airlines offer the utmost comfort, allowing you to arrive relaxed, refreshed and raring to go.

All Your Meals

Breakfast, lunch and dinner is included every day.

Whilst breakfasts tend to be a mixture of local eats and familiar dishes from home, when it comes to lunch and dinner, most of the time you'll be enjoying regional cuisine, often eating where the locals do.

We also include a select number of 'feature meals', so you get to taste the signature dishes of the region, whilst the rest of the time you'll eat a delicious range of your destination's best food.

All Your Accommodation

You can be safe in the knowledge that your accommodation has been selected to best suit the locations you'll visit.

Our Classic tours feature hand-picked four-star properties selected for their comfort, modern amenities and convenient location for sightseeing. We occasionally include a stay in three-star plus hotels or lodges where we feel the character of the property will enhance your tour.

All Your Guided Touring

On all of our group tours, you'll be accompanied throughout by one of our expert guides, known as a National Escort. Their dedication, personality and sense of fun will immediately put you at ease and make you feel part of the family.

You can place your trust in your National Escort, who will help you navigate the quirks and charm of local life with confidence and ease.

All Your Immersive Experiences

We not only take you to lesser visited places, but offer authentic experiences throughout.

Be it learning a local craft, practicing an old tradition or dining with locals, you'll get under the skin of our destinations and their cultures. Check out the Authentic Experiences box on each tour page for details.

All Your Local Transport

When you're not gliding along the tracks in comfort on your rail journey, you'll enjoy a variety of local transport styles that help you explore each destination with ease. Most touring is by air-conditioned coach, with extra space to stretch out thanks to our seat-and-a-half per guest policy.

You'll also experience authentic local travel – from river cruises through breathtaking landscapes to rickshaw rides, and convenient domestic flights – all designed to enhance your adventure.

Even Your Visas

Organising your visa yourself can be a time-consuming and costly addition to your holiday. Not with Wendy Wu Tours' hassle-free visa process.

The cost of your visa is included in the tour price for all UK & Irish passport holders. What's more, our expert team will provide advice, coordinate your processing and safely return your passports, leaving you to simply enjoy your holiday preparation.

Please note the range of inclusions differs slightly on our Go Beyond tours to suit the preferences of the more adventurous traveller. See page 10 for details.



Experience authentic local transport throughout your tour

Cultural encounters, every step of the way

To make sure you truly immerse yourself in your chosen destination, we pack every single one of our tours with authentic cultural experiences. We've highlighted our favourite ones in the 'Authentic Experiences' box on each tour page, but for now, here are just a few examples of what you can look forward to...



TAI CHI

Part of an invigorating morning routine practised by many locals across the country, enjoy a Tai Chi session for yourself, learning basic steps from a master. Experience this on China by Rail.



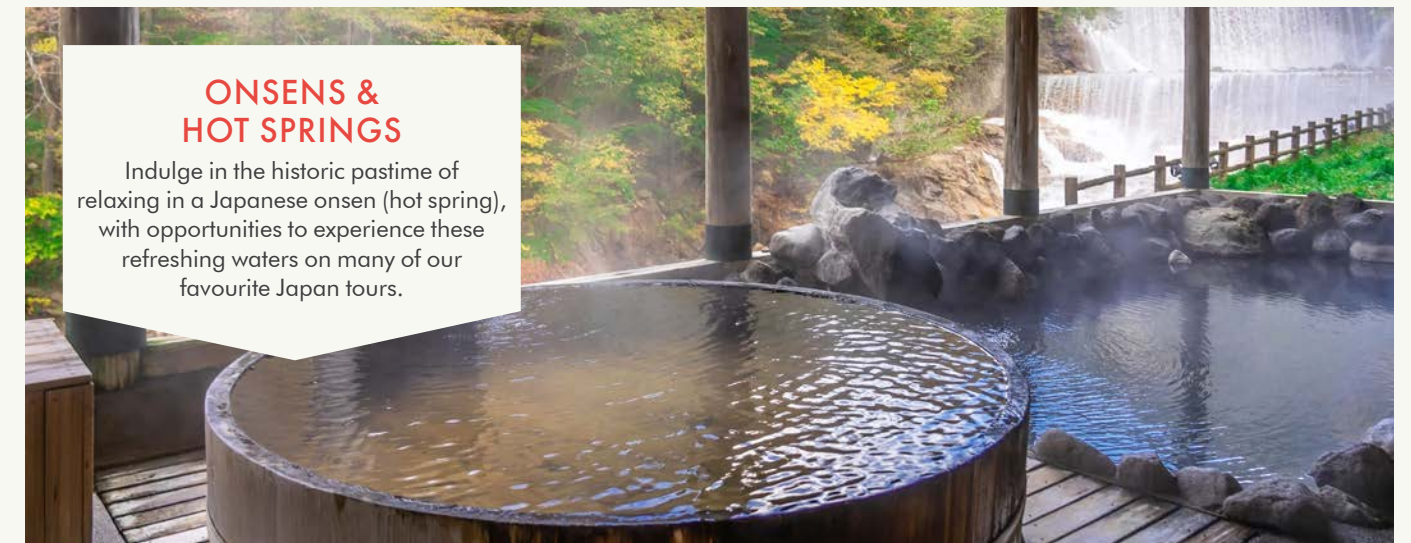
STREET FOOD TOUR

Savour Southeast Asia's bold flavours with street food tastings, from Hanoi's aromatic pho to Kuala Lumpur's smoky satay and Phuket's tangy pad Thai, each bite reflecting culinary tradition. Experience this on Singapore to Bangkok by Rail or Vietnam & the Reunification Express.



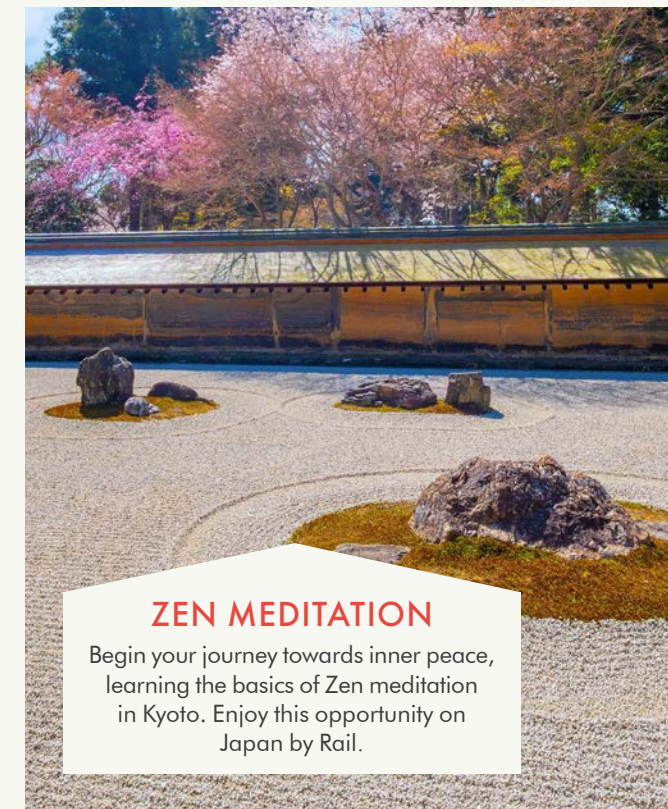
TEA CEREMONY

A perfect display of Japanese culture, witness the preparation and performance involved in the 'Way of Tea'. Enjoy this experience on almost all Japan tours.



ONSENS & HOT SPRINGS

Indulge in the historic pastime of relaxing in a Japanese onsen (hot spring), with opportunities to experience these refreshing waters on many of our favourite Japan tours.



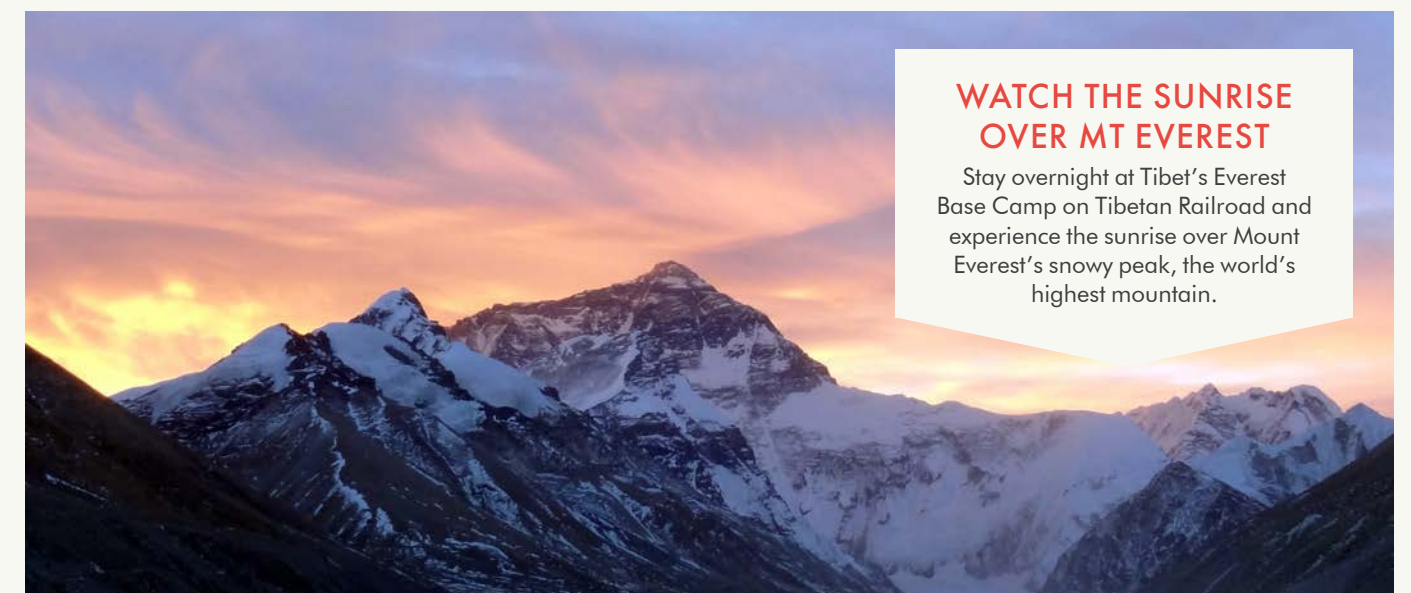
ZEN MEDITATION

Begin your journey towards inner peace, learning the basics of Zen meditation in Kyoto. Enjoy this opportunity on Japan by Rail.



AARTI CEREMONY

Get swept up in ringing bells, candlelight and chanting as you witness the puja ceremony of Ganga Aarti, a nightly ritual dedicated to the River Ganges, celebrated on Varanasi's famous ghats. Experience this on India by Rail.



WATCH THE SUNRISE OVER MT EVEREST

Stay overnight at Tibet's Everest Base Camp on Tibetan Railroad and experience the sunrise over Mount Everest's snowy peak, the world's highest mountain.

Tour Styles Explained

As every traveller is different, we’ve developed a range of touring styles that will allow you to travel on one of our experience-packed tours, your way.

CLASSIC	GO BEYOND
Our Classic tours take care of everything, allowing you to sit back and enjoy the experience to the full. Travelling in a group of no more than 28 guests, these tours are fully inclusive of all meals and a comprehensive touring programme including authentic cultural experiences.	Our Go Beyond tours take you a little further from the comforts of home, uncovering lesser-visited sights. Limited to just 18 passengers, these tours allow you to delve even deeper into local culture while offering more time for independent exploration.

	CLASSIC	GO BEYOND
 Visa fees for UK & Irish passport holders	✓	✓
 Domestic transportation	✓	✓
 Meals	All	All or Most
 Accommodation	✓	✓
 International economy airfares and taxes	✓	✓
 Sightseeing	All	All or Most

PRIVATE TOURS	CRUISE & TOUR
Experience our award-winning itineraries with the benefit of your own private, experienced local guide. Perfect for those who enjoy added independence and flexibility, our Private Tours are ideal for families and friends looking to share unforgettable moments together.	Combining an ocean cruise with an escorted group tour packed with top sights and unforgettable experiences, our ‘Cruise & Tour’ options offer the best of both worlds. Including flights, cruise, stopovers and full Wendy Wu tour with expert guide, all meals and visas (where applicable), prepare for the adventure of a lifetime.

TAILORMADE & SPECIAL GROUPS	SHORT STAYS & STOPOVERS
For the ultimate in bespoke touring, our expert Tailormade consultants can help you design a holiday that’s uniquely yours. Choose your destinations, accommodation, touring and experiences, or, if you’re travelling with ten or more friends, family, or a club, we’ll create an independent Special Group tour—tailored to your interests and fully escorted, without the hassle of planning it yourself.	Make your trip of a lifetime even more memorable by extending your tour, or adding a stopover en route. A short stay will allow you to delve even deeper into a region, explore a whole other country, or even give you the chance to relax on a beautiful beach. A stopover on the other hand is an easy way to not only break up your journey, but a great way to add a few days in a buzzing, cosmopolitan metropolis to your travel itinerary.



PHYSICAL RATING

All our tours feature a physical rating to help you select the right holiday for you. Every tour requires the ability to walk around sights unaided, while tours with higher physical ratings may involve longer walks, cycling, or other physical activities. Tours that traverse rough terrain, visit remote areas, or go to high altitudes will also have higher physical ratings.

LEVEL 1	LEVEL 2	LEVEL 3	LEVEL 4
			
A reasonable level of fitness is required. Expect to be on your feet for most of the day walking around sights, often including steps and getting on and off coaches, trains, or boats. Occasional longer walks may be included.	A moderate level of fitness is required. You will be on your feet for most of the day, with longer walks that include ascents and descents on steps or uneven paths. Travelling conditions may be more challenging in some areas.	A good level of fitness is required. You need to be comfortable walking long distances and for extended durations. The tour may also include activities such as cycling and hiking and visit some remote areas with basic infrastructure.	A high level of fitness and a strong spirit of adventure are required. These tours are full of activity and often visit remote areas with basic infrastructure. Expect to be on your feet and active for much of the day, with some long travelling days.

As the physical requirements vary by tour, we recommend reviewing the Detailed Itinerary on our website before booking to ensure it’s the right fit for you.



Discover Japan, Taiwan & South Korea with Wendy Wu Tours

Destinations known for their timeless culture, incredible food and glorious nature, it only adds to the thrills of exploring the wonders of Japan, South Korea and Taiwan to travel on their high-speed rail networks – Shinkansen, KTX and THSR.

WENDY'S TOP 9 SIGHTS

1 MOUNT FUJI

Mount Fuji's elegant form and snow-dusted summit have inspired centuries of art and pilgrimage. A highlight of Honshu, it features on almost all of our Japan itineraries.



2 KYOTO

Kyoto was Japan's capital for many centuries. This cradle of Japanese culture is packed with enchanting sights, 17 of which are UNESCO World Heritage-listed. Kyoto features on almost all of our Japan itineraries.



3 HIROSHIMA

The coastal city of Hiroshima is a testament to the power of the human spirit; a symbol of hope, renewal and regeneration. Reflect at the poignant Peace Memorial Museum & Park on many of our Japan tours.



4 TAKAYAMA

This alpine town offers a peaceful glimpse into Japan's traditional way of life. Explore its preserved Edo-era streets and wooden merchant houses on several of our Japan itineraries, including Japan by Rail (page 20).



5 SEOUL

With its historic palaces, neon lights and nonstop energy, Seoul is a city of endless contrasts. Feel the pulse of modern Korea in this fascinating capital, featured on all our South Korea tours.



6 GYEONGJU

Called 'the museum without walls', the historic city of Gyeongju holds centuries of Korean heritage in its temples and tombs. Discover the monuments of Gyeongju's golden Silla dynasty on all our South Korea itineraries.



7 BUSAN

The seaside city of Busan mixes golden beaches with colourful markets, stunning ocean views and a friendly, laidback spirit. Uncover the charms of Busan on all our South Korea tours.



8 THE KOREAN DMZ

The buffer zone between North and South Korea is among the world's most fascinating borders. Explore observation posts and historic infiltration tunnels on Essence of South Korea & Japan (page 16).



9 ALISHAN FOREST TRAIN

Journey through mountains and Taiwanese forest on Asia's highest narrow-gauge railway. Originally built for logging, this iconic train now offers a scenic ride past tea fields, waterfalls, and remote hillside villages.



JEWELS OF JAPAN

- 11 DAYS FROM
- PER PERSON £6,590
- FLIGHT INCLUSIVE FROM THE UK
- ALL MEALS

TOUR TICKLIST

- ✓ Feel the rush of Tokyo
- ✓ Admire beautiful Mount Fuji
- ✓ Take part in a tea ceremony
- ✓ Be charmed by Kyoto
- ✓ Reflect in Hiroshima
- ✓ Explore relaxed Miyajima

PRICE INCLUDES

- 9 breakfasts, 8 lunches & 9 dinners
- International flights and current taxes
- Domestic transportation
- 3 star plus – 4 star accommodation
- Touring with guides and entrance fees



Try your hand at origami

► AUTHENTIC EXPERIENCES

- Take part in a handicraft experience – the traditions and techniques of the intricate art of origami. You'll learn to fold some of the simpler, but still impressive, shapes and designs.
- More than just a hot drink, the Japanese tea ceremony dates back to the 9th century and represents purity, tranquillity, respect and harmony. Experience the preparation and presentation that goes into this sacred ritual.
- The buckwheat soba noodle is one of Japan's most famous culinary exports – try your hand at making them from scratch, before feasting on the delicious results for lunch.



Journey by ferry to the holy island of Miyajima

ITINERARY

DAYS 1-2: FLY OVERNIGHT TO TOKYO

Fly overnight to the dazzling metropolis of Tokyo, Japan's capital city. Depending on your time of arrival, the rest of the day is yours to start soaking up the local culture.

DAY 3: DISCOVER TOKYO

Head to the Tokyo National Museum in Ueno Park to uncover 2,000 years of Japanese heritage. After lunch, stop by Senso-ji Temple en route to the 634-metre Skytree, where you'll ascend to the Observation Deck for panoramic views over the sprawling city below.

DAY 4: SHIBUYA & TOKYO BAY

Visit Meiji Jingu, a Shinto shrine dedicated to the deified spirit of Meiji, the 19th-century emperor who presided over Japan's radical modernisation. Nestled in peaceful urban woodland, this shrine feels a world away from the buzzing Shibuya Crossing, which we will admire before lunch. Enjoy the afternoon at leisure to explore as you wish. End the day with a dinner cruise on Tokyo Bay and admire the twinkling city lights from across the harbour.

DAY 5: MOUNT FUJI & THE FUJI LAKES

Drive west into the foothills of the iconic Mount Fuji, a region spectacularly dotted by lakes formed by past volcanic eruptions. Drive to Mount Fuji's 5th station (weather permitting), which sits at an elevation of more than 2,000 metres, and take in the scenic views over the landscapes below. Continue to Lake Kawaguchi in search of more views of Mount Fuji. Later, pay a visit to Iyashi no Sato, a charming village on the edge of Lake Saiko. Here, the lovingly restored thatched-roofed farmhouses have been

transformed into an open-air museum and craft village. Stay overnight in Mishima or the wider Fuji area.

DAY 6: BULLET TRAIN TO KYOTO

Visit Oshino Hakkai village, known for its views of Mount Fuji. Later, learn how to make your very own traditional Japanese soba noodles, and enjoy your creations for lunch! Later, transfer to Mishima station and journey on the bullet train to Kyoto. An enchanting city, Kyoto was the capital for a thousand years. Today, it embodies the legacy of feudal-era Japan, brimming with historic architecture.

DAY 7: TEA, TEMPLES & ORIGAMI

Enjoy a full day tour of Kyoto, starting with a visit to one of Kyoto's delightful temples – the 17th-century Buddhist Kiyomizu. Immerse yourself in Japanese culture, observing the sacred rituals of a tea ceremony before trying your hand at origami. Dating back to the 6th century, the art of 'folding paper' is a cultural symbol of simplicity, beauty and peace. Later, explore the impressive Fushimi Inari Shrine with its remarkable 10,000 red torii gates.

DAY 8: JOURNEY TO HIROSHIMA

Begin the day with a visit to Ryoan-ji Temple, referred to locally as the 'temple of the peaceful dragon', which is home to Japan's most famous Zen garden. Afterwards, enjoy a photo opportunity at the renowned Kinkaku-ji Temple, known as the 'Golden Pavilion'. Travel by bullet train to Hiroshima; a bustling coastal city with a famously tragic history.



Admire the thatched farmhouses of Oshino Hakkai near Mount Fuji

DAY 9: HIROSHIMA & MIYAJIMA

Hop on a ferry to the holy island of Miyajima and see its 'floating' torii gate, one of Japan's most recognisable UNESCO World Heritage sites, located on the edge of the Seto Inland Sea. Later, return to Hiroshima and take time to reflect at the Peace Memorial Park and Museum, which pay homage to the victims of the 1945 atomic bomb. Afterwards, ascend the Orizuru Tower for poignant views over this beautiful, resilient city.

DAY 10: HIMEJI CASTLE

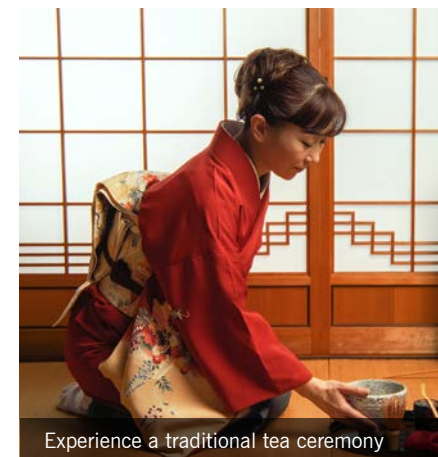
Travel to Himeji to visit its famous castle. This feudal era fort, one of the most impressive in Japan, towers over the city and is recognisable as the backdrop to several major films. Admire its well-preserved architecture before strolling around Koko-en, the Edo-style gardens just across the castle moat. Continue to the cosmopolitan city of Osaka ahead of this evening's farewell dinner.

DAY 11: FLY OSAKA TO UK

Fly to the UK, arriving home the same or following day.



Pay your respects in Hiroshima



Experience a traditional tea ceremony

EXTEND YOUR STAY...



SEOUL SHORT STAY

4 days from £690pp

HONG KONG GLIMPSES STOPOVER

3 days from £390pp

ESSENTIAL DUBAI STOPOVER

3 days from £220pp

Visit page 52 to learn more about all of our short stays and stopovers.

JEWELS OF JAPAN

CLASSIC JAPAN

PHYSICAL RATING



IS THIS TOUR FOR YOU?

See the classic sights of Japan, visiting modern Tokyo, iconic Mount Fuji and historic Kyoto. A visit to Hiroshima's Peace Memorial Park and Museum and the holy island of Miyajima complete this fascinating tour.

PRICES & DEPARTURES

Departing days of the week vary during peak season

2026 DATES

16 Mar - 26 Mar	£6,990	17 May - 27 May	£6,590
19 Mar - 29 Mar	£6,990	24 May - 03 Jun	£6,590
22 Mar - 01 Apr	£6,990	16 Aug - 26 Aug	£6,790
23 Mar - 02 Apr	£6,990	06 Sep - 16 Sep	£6,590
24 Mar - 03 Apr	£6,990	13 Sep - 23 Sep	£6,590
26 Mar - 05 Apr	£6,990	20 Sep - 30 Sep	£6,590
29 Mar - 08 Apr	£8,190	27 Sep - 07 Oct	£7,790
31 Mar - 10 Apr	£6,990	04 Oct - 14 Oct	£6,590
02 Apr - 12 Apr	£6,990	08 Oct - 18 Oct	£6,590
05 Apr - 15 Apr	£6,990	11 Oct - 21 Oct	£6,590
07 Apr - 17 Apr	£6,990	15 Oct - 25 Oct	£6,590
09 Apr - 19 Apr	£6,990	18 Oct - 28 Oct	£6,590
12 Apr - 22 Apr	£6,990	25 Oct - 04 Nov	£6,590
19 Apr - 29 Apr	£6,990	01 Nov - 11 Nov	£6,590
03 May - 13 May	£6,590	05 Nov - 15 Nov	£6,590
10 May - 20 May	£6,590	12 Nov - 22 Nov	£6,590

2027 DATES

11 Mar - 21 Mar	£7,090	23 May - 02 Jun	£6,690
15 Mar - 25 Mar	£7,090	06 Jun - 16 Jun	£6,690
18 Mar - 28 Mar	£7,090	13 Jun - 23 Jun	£6,690
21 Mar - 31 Mar	£7,090	20 Jun - 30 Jun	£6,690
22 Mar - 01 Apr	£7,090	18 Jul - 28 Jul	£6,690
23 Mar - 02 Apr	£7,090	15 Aug - 25 Aug	£6,690
25 Mar - 04 Apr	£7,090	05 Sep - 15 Sep	£6,690
28 Mar - 07 Apr	£8,390	12 Sep - 22 Sep	£6,690
30 Mar - 09 Apr	£7,090	19 Sep - 29 Sep	£6,690
01 Apr - 11 Apr	£7,090	26 Sep - 06 Oct	£7,990
04 Apr - 14 Apr	£7,090	03 Oct - 13 Oct	£6,690
06 Apr - 16 Apr	£7,090	07 Oct - 17 Oct	£6,690
08 Apr - 18 Apr	£7,090	14 Oct - 24 Oct	£6,690
11 Apr - 21 Apr	£7,090	21 Oct - 31 Oct	£6,690
15 Apr - 25 Apr	£7,090	24 Oct - 03 Nov	£6,690
18 Apr - 28 Apr	£7,090	31 Oct - 10 Nov	£6,690
02 May - 12 May	£6,690	04 Nov - 14 Nov	£6,690
09 May - 19 May	£6,690	07 Nov - 17 Nov	£6,690
16 May - 26 May	£6,690	11 Nov - 21 Nov	£6,690

Flight and supplement information

- Based on London Heathrow departures
- Regional UK departures available
- Flight upgrades available on request
- Land only from £5,790 (Tokyo - Osaka)
- Single room from £1,340

Dedicated solos departure

See website for full list of departure dates or call 0808 278 3517

Call for our 2028 pricing and departures

ESSENCE OF SOUTH KOREA & JAPAN

- 16 DAYS FROM
- PER PERSON £9,690
- FLIGHT INCLUSIVE FROM THE UK
- ALL MEALS

TOUR TICKLIST

- ✓ Explore bustling Seoul
- ✓ Visit historic Gyeongju
- ✓ Discover picturesque Busan
- ✓ Reflect in Hiroshima
- ✓ Be charmed by Kyoto
- ✓ Feel the rush of Tokyo

PRICE INCLUDES

- 14 breakfasts, 13 lunches & 14 dinners
- International flights and current taxes
- Domestic transportation
- 3 star plus – 4 star accommodation
- Touring with guides and entrance fees



Learn how bonsai are cultivated

► AUTHENTIC EXPERIENCES

- Visit the Shunka-en Bonsai Museum in Tokyo for an insight into the cultivation of these iconic miniature trees. Watch a live demonstration by an expert, then try your hand at a little pruning yourself!
- Embark on an informative and unique adventure to the DMZ, the buffer zone between the Koreans. Your visit will include the DMZ Theatre & Exhibition Hall, the 3rd Infiltration Tunnel and Unification Village.
- Enjoy lunch in Kyoto with a very special host: an apprentice geisha (maiko) learning her craft. Spotting a geisha in Kyoto is a matter of luck, so this is a rare opportunity to enjoy a window into their private world.



Experience the Royal Guard Changing Ceremony at Gyeongbok Palace

ITINERARY

DAYS 1-2: FLY OVERNIGHT TO SEOUL

Fly overnight to Seoul, the dazzling capital city of South Korea. Depending on your time of arrival, the rest of the day is yours to start soaking up the local culture. This evening meet your National Escort and fellow travellers to enjoy dinner at a local restaurant.

DAY 3: EXPLORE SEOUL

Amongst the skyscrapers, nightlife districts and colossal shopping malls of Seoul, there is an exceptional amount of culture and tradition, from busy teahouses to magnificent palaces just waiting to be explored. Enjoy a full day tour of Seoul starting at Gyeongbok Palace to watch the 'Changing of the Guards' ceremony, and then visit the palace itself. Next, attend a Korean cooking class – making traditional bibimbap before tucking into your creations for lunch. Enjoy the panoramic city views at N Seoul Tower.

DAY 4: VISIT THE DMZ

Created as a buffer zone between North Korea and South Korea at the end of the Korean War, the DMZ is part of the most heavily militarised border in the world. An early start is needed today, as tickets to the DMZ are limited*. Explore the DMZ Theatre & Exhibition Hall, walk along the 3rd Infiltration Tunnel, visit Dora Observatory & Station and see the Bridge of Freedom. Return to Seoul to explore Gwangjang Market.

**While every effort will be made to get the tickets, should this not be possible, you will instead take a ride on the DMZ gondola and visit the Odusan Unification Observatory.*

DAY 5: TRAIN TO GYEONGJU

Take a train from Seoul to Gyeongju. A city of cultural and historical relics, Gyeongju is often called 'the museum without walls'. Capital of the Silla Kingdom for over 1,000 years, the city is home to a staggering number of tombs, temples, statues and ruins, some of which you'll explore today. In the afternoon, begin at the magnificent UNESCO World Heritage listed Bulguksa Temple, considered the pinnacle of Silla architecture, and Seokguram Grotto. Later, take a stroll at Anapji Pond.

DAY 6: EXPLORE BUSAN

Begin the day with a visit to Gyeongju National Museum, and then explore Tumuli Park, a collection of royal tombs. Continue by road to Busan. Laidback compared to Seoul's bustle, Busan is a city full of character and traditional features as well as mountains, beaches, temples and exquisite seafood. In the afternoon, visit the Jagalchi Fish Market and browse the wares at Gukje Market. Next, head over to Dongbaekseom Island and soak up the natural beauty, before feeling the sand between your toes on Haeundae Beach.

DAY 7: GOODBYE SOUTH KOREA, HELLO JAPAN

It's time to say goodbye to South Korea and hello to Japan! Fly to Fukuoka, located on the northern coast of Kyushu.

DAY 8: FROM FUKUOKA TO HIROSHIMA

Head to Kyushu National Museum for an overview of local history, then explore the nearby Shinto shrine of Daizafu Tenmangu. After lunch, board the bullet train to Hiroshima, the 'city of peace'.



Ascend N Seoul Tower



Stroll through the historic Bikan quarter in Kurashiki

DAY 9: HIROSHIMA & MIYAJIMA

Start the day at the Peace Memorial Park and Museum, which pays homage to the victims of the 1945 atomic bomb through poignant photographs and testimonies. Later, take a ferry to the beautiful island of Miyajima to see its UNESCO-listed floating torii gate, located on the edge of the Seto Inland Sea.

DAY 10: DISCOVER ANCIENT KURASHIKI & OKAYAMA

Take the bullet train to Kurashiki. Here, explore the beautifully-preserved Bikan Historical Quarter, which boasts a charming riverfront lined with whitewashed kominka houses and quaint willow trees. Next, head to Okayama and visit Koraku-en Garden, one of the 'Three Great Gardens of Japan'. Later, board the bullet train to the vibrant city of Osaka.

DAY 11: EXPLORE NARA & OSAKA

Travel to Nara and enjoy a leisurely walk through Nara Park to Todai-ji Temple before returning to Osaka. Stop by Dotonbori Street, famous for its eye-catching street food and signage, then visit the impressive Osaka Castle.

DAY 12: TRAVEL TO KYOTO

Journey by road to Kyoto. An enchanting city, Kyoto was Japan's capital city for 1,000 years; today it is a testament to ancient Japan, packed with tranquil temples and sublime gardens. Visit Ryoan-ji, with its lovely Zen garden, and the famous Kinkaku-ji Temple, also known as the 'Golden Pavilion'. Later, immerse yourself in Japanese culture, experiencing the sacred rituals of a tea ceremony.

DAY 13: MEET AN APPRENTICE GEISHA

Visit the vibrant district of Arashiyama and stroll through the bamboo forest with its towering thickets before trying your hand at the art of fan painting. Next, you'll enjoy a rare opportunity to have lunch with a maiko – a geisha in training – and gain some insight into their fascinating world. In the afternoon, visit one of Kyoto's most famous sites – Fushimi Inari Shrine, renowned for its 10,000 vermilion torii gates, and admire the scenic framed pathway that snakes up its hillside.

DAY 14: VIA HAKONE TO TOKYO

Take the bullet train to Odawara and visit Hakone Shrine, situated on the shores of Lake Ashi. If weather permits, admire picturesque views of Mount Fuji in the background. After lunch, take part in a Yosegi marquetry craft experience, before continuing by road to Tokyo – Japan's incomparable capital.

DAY 15: EXPLORE TOKYO

Tokyo is the ultimate 24-hour city, but look behind its frantic, high-tech neon-lit frontage and you will find plenty of tranquil backstreets and ancient temples. First, experience the hustle and bustle of the famous Shibuya Scramble Crossing, one of Tokyo's most iconic sights. Next, wander through the old district of Asakusa to soak up the atmosphere at Senso-ji, Tokyo's most famous and beloved temple. After lunch, visit a bonsai museum and observe a demonstration before trying your hand at bonsai pruning. End the day with a dinner cruise on the beautiful Tokyo Bay.

DAY 16: FLY TOKYO TO UK

Fly to the UK, arriving home the same or following day.

ESSENCE OF SOUTH KOREA & JAPAN

CLASSIC SOUTH KOREA & JAPAN

PHYSICAL RATING



IS THIS TOUR FOR YOU?

This two-week South Korea and Japan adventure gives a fascinating insight into two of Asia's most intriguing countries. Close in proximity yet culturally distinct, this tour offers the perfect way to experience the diversity of the Far East.

PRICES & DEPARTURES

Departing Saturday returning Sunday

2026 DATES			
28 Mar - 03 Apr	£9,790	12 Sep - 18 Sep	£9,690
04 Apr - 10 Apr	£9,790	10 Oct - 16 Oct	£9,690
09 May - 15 May	£9,690	07 Nov - 13 Nov	£9,690

2027 DATES			
20 Mar - 26 Mar	£9,990	25 Sep - 01 Oct	£9,790
27 Mar - 02 Apr	£9,990	09 Oct - 15 Oct	£9,990
03 Apr - 09 Apr	£9,990	16 Oct - 22 Oct	£9,990
10 Apr - 16 Apr	£9,990	23 Oct - 29 Oct	£9,990
08 May - 14 May	£9,790	30 Oct - 05 Nov	£9,990
11 Sep - 17 Sep	£9,790	06 Nov - 12 Nov	£9,990

Flight and supplement information

- Based on London Heathrow departures
- Regional UK departures available
- Flight upgrades available on request
- Land only from £8,890 (Seoul - Tokyo)
- Single room from £1,550
- Tipping paid locally US\$30 (South Korea)

Call for our 2028 pricing and departures



Enjoy views of Mount Fuji

JOURNEY THROUGH JAPAN

14 DAYS FROM

PER PERSON £7,590

FLIGHT INCLUSIVE FROM THE UK

ALL MEALS

TOUR TICKLIST

- ✓ Discover Hokkaido's Ainu culture
- ✓ Explore Tokyo and Sapporo
- ✓ Stay in a traditional ryokan
- ✓ Soak in a hot spring onsen
- ✓ Gaze at Mount Fuji
- ✓ Uncover Kyoto's past



View the magnificent Kegon Waterfall

PRICE INCLUDES

- 12 breakfasts, 11 lunches & 12 dinners
- International flights and current taxes
- Domestic transportation
- 3 star plus – 4 star accommodation, including an overnight stay in a ryokan
- Touring with guides and entrance fees



Uncover Ainu culture in Shiraoi

► AUTHENTIC EXPERIENCES

- Visit Hokkaido's Ainu Museum for a rare insight into the art, culture and spirituality of the indigenous Ainu. Once the 'First People' of Hokkaido, the Ainu are now a minority ethnic group whose very language is considered endangered.
- Have lunch with a very special host: a maiko, or apprentice geisha! Seeing a geisha is a matter of luck, even in Kyoto; enjoy this rare guaranteed opportunity for a glimpse into their world.
- Spend the night in a ryokan, a centuries-old style of guesthouse that offers the ultimate Japanese experience! Sleep on a futon on a tatami mat, dine on traditional food and bathe in the relaxing warm waters of an onsen.

ITINERARY

DAYS 1-2: FLY OVERNIGHT TO SAPPORO

Fly overnight to the vibrant city of Sapporo, capital of the northern Japanese island of Hokkaido. Depending on your time of arrival, the rest of the day is yours to start soaking up the local culture.

DAY 3: OLYMPIC SKI JUMP & OTARU

This morning, ascend to the Okurayama viewing point, soaring up to the summit of the Sapporo Winter Olympics ski jump by chair lift – the views over the surrounding mountains are breathtaking. Continue to the pretty port town of Otaru and take some time to walk along the streets of the village and stroll along the picturesque canal. This evening, visit a local beer museum before dinner.

DAY 4: THE AINU MUSEUM & HAKODATE

Drive to Shiraoi. Here, visit the Upopoy National Ainu Museum and Park. This fascinating museum tells the story of the Ainu culture, indigenous to this corner of Japan, and which was almost erased in the Meiji era. Ainu identity is a valuable part of Japan's diversity, characterised by its unique language, rich storytelling tradition, and deep relationship with 'kamuy' (spirit deities). Explore Ainu culture through the museum's wealth of exhibits, including a number of tools and hunting weapons adorned with beautiful patterns.

Later, hop on a bullet train to the harbour city of Hakodate, set on Hokkaido's southern tip. This evening, ascend Mount Hakodate to see the beauty of this uniquely-shaped city by night.

DAY 5: HAKODATE, AOMORI & HIROSAKI

Start the day wandering Hakodate's bustling asaichi (morning market), where hundreds of stores and stalls sell fresh local produce, seafood and the odd souvenir. Next, ascend Goryokaku Tower for views over Goryokaku Fort and Mount Hakodate before boarding the bullet train to the lovely city of Aomori in the north of Honshu, Japan's largest island. Visit the Nebuta Warasse, a museum dedicated to Aomori's famous 300-year-old Nebuta Matsuri, a lively summer festival. Transfer to Hirosaki.

DAY 6: TSUNAGI ONSEN

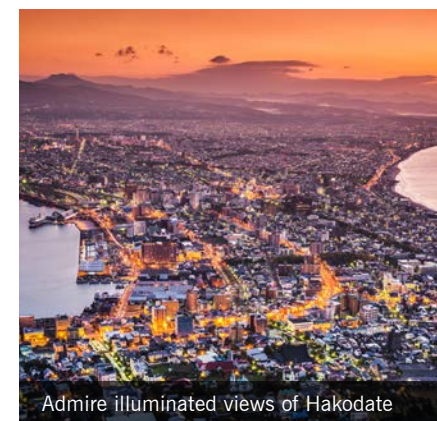
Depart Hirosaki for Kakunodate, a former samurai stronghold. Explore the Aoyagi Samurai Manor Museum and stroll around Ishiguro House, the town's oldest samurai residence. Later, travel to the hot spring town of Tsunagi, where you'll embrace traditional Japanese culture with an overnight ryokan. Unwind in a natural onsen and sleep on a futon laid out on tatami mats – a timeless way to experience Japan.

DAY 7: CRUISE MATSUSHIMA BAY

Travel to Hiraizumi, where you'll explore the peaceful Chuson-ji Temple with its beautiful old gold leaf-covered hall. Drive south to reach Matsushima Bay, where you'll enjoy a cruise amongst the small pine tree-covered islands of this famously picturesque seascape. Overnight in Sendai.

DAY 8: SENDAI TO NIKKO

Walk to Sendai station and take the bullet train to Nikko. Explore the beautiful surroundings of Nikko National Park, where you'll visit Toshogu Shrine. Toshogu is



Admire illuminated views of Hakodate



Cruise through Matsushima Bay

arguably Japan's most lavish shrine, built as a memorial to Shogun Tokugawa Ieyasu. Later, visit the magnificent Kegon Waterfall Observation Deck, and admire the waters of Chuzenji Lake crashing for hundred metres down the cliffside. Drive to Tokyo.

DAY 9: EXPLORE TOKYO

Japan's capital is the ultimate 24-hour city, but look behind its frantic, high-tech frontage and you'll find plenty of tranquil backstreets and old temples to explore. Start the day in the vibrant district of Asakusa, where you will visit Senso-ji, Tokyo's oldest temple, and wander down Nakamise shopping street before a visit to Tokyo National Museum. After lunch, stop for a photo at the iconic Shibuya Scramble Crossing before ascending to the observation deck of the Tokyo Metropolitan Government building for exceptional views over the city.

DAY 10: ADMIRE MOUNT FUJI

Drive from Tokyo to Mount Fuji's 5th Station, nestled a little over halfway up the mountain's slopes, and the highest point which can be accessed by road. Transfer to the Hakone area, where a quick ferry ride across Lake Ashi will bring you to the Komagatake Ropeway. Enjoy the views from the cable car before returning to Tokyo.

DAY 11: TRAVEL TO KYOTO

Capital for 1,000 years, this city's historic legacy is visible at every turn. This afternoon, visit Togetsukyo Bridge in the heart of the vibrant Arashiyama district and enjoy a leisurely walk through the towering bamboo forest.

DAY 12: EXPLORE KYOTO

This morning, visit one of Japan's most famous temples, Kinkaku-ji, the 'Golden Pavilion'. Famously covered in gleaming gold leaf, this building sits on the edge of a reflecting pool. Later, explore Nishiki Market, dubbed 'Kyoto's kitchen', with its small boutiques and various street food stands. After lunch, visit a sake brewery and sample this traditional Japanese spirit before some time at leisure.

DAY 13: MEET AN APPRENTICE GEISHA

Visit Fushimi Inari Shrine, then return to the city centre to observe the rituals of a Japanese tea ceremony. This lunchtime, enjoy a special experience: lunch hosted by a maiko, or geisha-in-training! Continue to the booming city of Osaka ahead of this evening's farewell dinner.

DAY 14: FLY OSAKA TO UK

Fly to the UK, arriving home the same or following day.

EXTEND YOUR STAY...



SEOUL SHORT STAY

4 days from £690pp

HONG KONG GLIMPSES

3 days from £390pp

Visit page 52 to learn more about all of our short stays and stopovers.

JOURNEY THROUGH JAPAN

CLASSIC JAPAN

PHYSICAL RATING



IS THIS TOUR FOR YOU?

Journey south from Sapporo to Osaka, exploring the diversity of Hokkaido and northern Honshu en route. From traditional onsen towns to glittering Matsushima Bay, discover some of Japan's hidden gems.

PRICES & DEPARTURES

Departing Saturday returning Friday

2026 DATES

28 Mar - 10 Apr	£7,790	10 Oct - 23 Oct	£7,590
18 Apr - 01 May	£7,790	17 Oct - 30 Oct	£7,590
09 May - 22 May	£7,590	24 Oct - 06 Nov	£7,590
12 Sep - 25 Sep	£7,590		

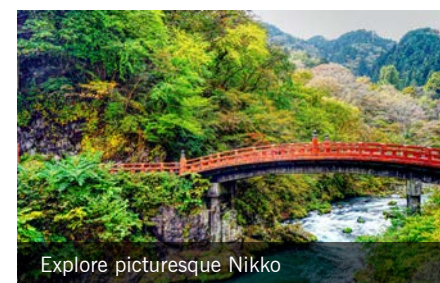
2027 DATES

27 Mar - 09 Apr	£7,990	12 Jun - 25 Jun	£7,890
03 Apr - 16 Apr	£7,990	11 Sep - 24 Sep	£7,890
10 Apr - 23 Apr	£7,990	02 Oct - 15 Oct	£7,890
17 Apr - 30 Apr	£7,990	09 Oct - 22 Oct	£7,890
08 May - 21 May	£7,790	16 Oct - 29 Oct	£7,890
15 May - 28 May	£7,790	23 Oct - 05 Nov	£7,890
22 May - 04 Jun	£7,790		

Flight and supplement information

- Based on London Heathrow departures
- Regional UK departures available
- Flight upgrades available on request
- Land only from £6,790 (Sapporo - Osaka)
- Single room from £1,390

Call for our 2028 pricing and departures



Explore picturesque Nikko

JAPAN BY RAIL

- 21 DAYS FROM
- PER PERSON £10,790
- FLIGHT INCLUSIVE FROM THE UK
- ALL MEALS

TOUR TICKLIST

- ✓ Reflect in Nagasaki & Hiroshima
- ✓ Admire Kyoto's temples
- ✓ See the snow monkeys
- ✓ Explore bustling Tokyo
- ✓ Discover Sendai & Hakodate
- ✓ Spend time in Sapporo

PRICE INCLUDES

- 19 breakfasts, 18 lunches & 19 dinners
- International flights and current taxes
- Domestic transportation
- 3 star plus – 4 star accommodation
- Touring with guides and entrance fees



Join a hands-on sushi lesson

▶ AUTHENTIC EXPERIENCES

- ▶ Discover the history and etiquette of making and appreciating sushi with a hands-on lesson before sitting down with your instructing chef to enjoy Japan's most famous cuisine. It's the taking part that counts!
- ▶ Learn about the role of the masu sake cup in Japan's culture before stepping into the studio to make your very own cup with an original design, which you can then take home as a souvenir.
- ▶ Under the guidance of a skilled instructor, try your hand at making momiji manju (maple leaf bean buns), Miyajima's most famous confectionery for over a hundred years.



Journey through Japan by rail

ITINERARY

DAYS 1-2: FLY OVERNIGHT TO FUKUOKA

Fly overnight to the charming city of Fukuoka, the gateway to the island of Kyushu. Depending on your time of arrival, the rest of the day is yours to start soaking up the local culture.

DAY 3: EXPLORE NAGASAKI

Begin the day by travelling on the limited express train to Nagasaki. Explore Glover Garden, home to the 19th-century mansion of Thomas Glover, a Scottish merchant who played a key role in Japan's civil war and subsequent Meiji Restoration. This afternoon, pay your respects at the Nagasaki Atomic Bomb Museum before returning to Fukuoka.

DAY 4: MIYAJIMA ISLAND

Board the bullet train to Hiroshima, located on Japan's largest island, Honshu. Upon arrival in Hiroshima, take the ferry across the Seto Inland Sea to the holy island of Miyajima. Here, visit the Itsukushima Shrine and enjoy a momiji manju cooking experience. Later, return to Hiroshima.

DAY 5: HIROSHIMA HIGHLIGHTS

Visit Hiroshima's poignant Peace Museum to learn about the devastation of the 1945 atomic bomb, then pay your respects to the victims at the Memorial Park. After lunch, ascend Orizuru Tower for views of this reinvigorated city, and end the day with a stroll through Shukkei-en Garden.

DAY 6: ADMIRE HIMEJI CASTLE

Take the bullet train from Hiroshima to Himeji, where you'll visit the magnificent Himeji Castle before exploring Koko-en's beautiful gardens. Continue by limited express to Osaka.

DAY 7: OSAKA, NARA & CALLIGRAPHY

Admire views of Osaka from the Umeda Sky Building, then stroll through the Dotonbori district. Later, head to Nara Park. Admire Todai-ji Temple, home to the 15-metre-tall bronze Daibutsu Buddha, and say hello to the free-roaming deer who wander the grounds here. Enjoy an ink making and calligraphy class before returning to Osaka.

DAY 8: KYOTO'S TEMPLES

Drive one hour to Kyoto. Capital for 1,000 years, this enchanting city is the epitome of traditional Japan. Upon arrival, stroll through the Arashiyama bamboo forest and admire the towering thickets. Also visit Ryoan-ji Temple, home to Japan's best-known Zen garden, and Kinkaku-ji, the famous 'Golden Pavilion'.

DAY 9: TEA CEREMONY & FAN PAINTING

Immerse yourself in the Japanese way of life with a number of cultural activities. Watch the sacred rituals of a tea ceremony, relax with a Zen meditation demonstration, and try your hand at fan painting. Later, explore Gion – Kyoto's famous former geisha district.

DAY 10: EXPLORE KANAZAWA

Take the limited express train to Kanazawa and meander your way through Kenroku-en, one of the Three Great Gardens of Japan. Also visit the Nomura Samurai House and Kunani Pottery Factory.

DAY 11: SHIRAKAWA-GO VILLAGE

Drive south towards the Alps, stopping at Inami for a sake tasting and wooden cup making. Later, admire the gassho-style farmhouses at the UNESCO-listed village of Shirakawa-go, famous for their steep thatched roofs that resemble 'hands in prayer'. Continue to Takayama.



Visit the traditional town of Narai-juku



Enjoy spectacular views of Hakodate

DAY 12: DISCOVER TAKAYAMA

Explore Takayama, a traditional town at the edge of the Japanese Alps. Browse the riverside market before visiting the Festival Floats Museum and Takayama Jinya. The afternoon is at leisure to shop or enjoy the onsen facilities at your hotel.

DAY 13: SNOW MONKEYS

Drive through the scenic Japanese Alps to Jigokudani Yaen-Koen. Lace up your boots for a forest hike to the steaming hot springs, where semi-wild snow monkeys gather to bathe and play. Later, continue your journey to historic Matsumoto.

DAY 14: MATSUMOTO CASTLE

Begin the day with a visit to the magnificent 16th-century Matsumoto Castle, also known as 'Crow Castle', due to its intense black exterior. Next, head to a miso house and learn about the process of making this famous Japanese seasoning. Also visit the former post town of Narai-juku. Continue to Suwa and enjoy the onsen facilities at your hotel.

DAY 15: MOUNT FUJI

Drive south to reach the tranquil Lake Kawaguchi, where reflections of Mount Fuji ripple across the water. From here, drive up to Fuji's 5th Station for a closer view of the iconic peak. Continue to Tokyo, Japan's iconic capital.

DAY 16: TOUR TOKYO

Begin the day with a stroll through Hamarikyu Gardens. Next, take part in a sushi making class, and enjoy your own creations for lunch! Later, soak up the atmosphere at Senso-ji, browse the stalls on Nakamise shopping street and drive by the Imperial Palace Plaza.

DAY 17: TOKYO HIGHLIGHTS

Begin the day at the Tokyo Metropolitan Building and ascend to the observation deck for breathtaking views over the sprawling city. Next, soak up the buzzing atmosphere at the world-famous Shibuya Scramble Crossing before lunch. The afternoon is at leisure. End the day with a relaxing dinner cruise on the waters of Tokyo Bay; the perfect vantage point from which to admire the city lights.

DAY 18: SIP WHISKY IN SENDAI

Let the bullet train whisk you north to Sendai, the largest city in Tohoku. Transfer to the coast and enjoy a relaxing cruise on Matsushima Bay. Stop by the Nikka Whisky Factory before checking in at your hotel.

DAY 19: HAKODATE, HOKKAIDO

Say goodbye to Honshu Island as you board the bullet train to Hakodate, located on the island of Hokkaido. Visit the Goryokaku Tower for views of Hakodate's star shaped fortress, followed by some time at leisure. This evening, ascend Mount Hakodate and enjoy the fabulous views of the city below.

DAY 20: THE NATIONAL AINU MUSEUM

Board the express train to Shiraoi, where you'll visit the fascinating Ainu Museum and explore the culture of the indigenous Ainu people of Hokkaido. Ainu heritage is characterised by its rich storytelling tradition, historic hunting lifestyle, and a deep relationship with the world's 'kamuy', or spirit deities. Continue to Sapporo, our final stop.

DAY 21: FLY SAPPORO TO UK

Fly to the UK, arriving home the same or following day.

JAPAN BY RAIL

CLASSIC JAPAN

PHYSICAL RATING



IS THIS TOUR FOR YOU?

Embark on an journey through three of Japan's main islands: fertile Kyushu, historic Honshu, and fascinating Hokkaido. Take advantage of Japan's bullet trains, covering the country from top to toe.

PRICES & DEPARTURES

Departing days of the week vary during peak season

2026 DATES

14 Mar - 03 Apr	£10,990	11 Sep - 01 Oct	£10,790
16 Mar - 05 Apr	£10,990	18 Sep - 08 Oct	£10,790
18 Mar - 07 Apr	£10,990	25 Sep - 15 Oct	£10,790
20 Mar - 09 Apr	£10,990	02 Oct - 22 Oct	£10,790
22 Mar - 11 Apr	£10,990	06 Oct - 26 Oct	£10,790
24 Mar - 13 Apr	£10,990	09 Oct - 29 Oct	£10,790
26 Mar - 15 Apr	£10,990	11 Oct - 31 Oct	£10,790
28 Mar - 17 Apr	£10,990	13 Oct - 02 Nov	£10,790
30 Mar - 19 Apr	£10,990	15 Oct - 04 Nov	£10,790
03 Apr - 23 Apr	£10,990	17 Oct - 06 Nov	£10,790
05 Apr - 25 Apr	£10,990	19 Oct - 08 Nov	£10,790
07 Apr - 27 Apr	£10,990	21 Oct - 10 Nov	£10,790
08 May - 28 May	£10,790	25 Oct - 14 Nov	£10,790
15 May - 04 Jun	£10,790	27 Oct - 16 Nov	£10,790
05 Jun - 25 Jun	£10,790	07 Nov - 27 Nov	£10,790

2027 DATES

12 Mar - 01 Apr	£11,090	14 May - 03 Jun	£10,990
13 Mar - 02 Apr	£11,090	21 May - 10 Jun	£10,990
15 Mar - 04 Apr	£11,090	04 Jun - 24 Jun	£10,990
19 Mar - 08 Apr	£11,090	18 Jun - 08 Jul	£10,990
21 Mar - 10 Apr	£11,090	10 Sep - 30 Sep	£10,990
23 Mar - 12 Apr	£11,090	17 Sep - 07 Oct	£10,990
25 Mar - 14 Apr	£11,090	24 Sep - 14 Oct	£10,990
27 Mar - 16 Apr	£11,090	01 Oct - 21 Oct	£10,990
29 Mar - 18 Apr	£11,090	05 Oct - 25 Oct	£10,990
02 Apr - 22 Apr	£11,090	08 Oct - 28 Oct	£10,990
04 Apr - 24 Apr	£11,090	10 Oct - 30 Oct	£10,990
06 Apr - 26 Apr	£11,090	12 Oct - 01 Nov	£10,990
08 Apr - 28 Apr	£11,090	14 Oct - 03 Nov	£10,990
10 Apr - 30 Apr	£11,090	16 Oct - 05 Nov	£10,990
07 May - 27 May	£10,990	18 Oct - 07 Nov	£10,990

Flight and supplement information

- Based on London Heathrow departures
- Regional UK departures available
- Flight upgrades available on request
- Land only from £9,990 (Fukuoka - Sapporo)
- Single room from £1,990

Call for our 2028 pricing and departures



Watch snow monkeys bathe

NEW

TAIWAN BY RAIL

- 9 DAYS FROM
- PER PERSON £3,790
- FLIGHT INCLUSIVE FROM THE UK
- ALL MEALS

TOUR TICKLIST

- ✓ Discover vibrant Taipei
- ✓ Explore along the Pingxi Line
- ✓ Cruise scenic Sun Moon Lake
- ✓ Try your hand at mosaics
- ✓ Ride a high-speed train

PRICE INCLUDES

- 7 breakfasts, 6 lunches & 7 dinners
- International flights and current taxes
- Domestic transportation
- 3 star plus – 4 star accommodation
- Touring with guides and entrance fees



Get a taste of Alishan's home grown coffee

► AUTHENTIC EXPERIENCES

- The verdant Alishan region is not only known for tea but also for its rich, handpicked coffee. Visit Yuyupas Indigenous Culture Park to sample Alishan's distinctive mountain-grown coffee, surrounded by scenic plantations and forested hills.
- Originally constructed for logging, the Alishan Forest Train runs through a scenic mountain resort and nature reserve, passing villages, waterfalls, tea plantations and mountain wilderness. It is the highest narrow-gauge mountain railway in Asia.
- Venture into the vibrancy of Taipei's bustling night market, wandering with your guide along the famous snack street to enjoy a range of tasty local delicacies for dinner. Soak up the sights and smells of treats like black pepper buns and soup dumplings.



Ride the scenic Alishan Forest Train

ITINERARY

DAYS 1-2: FLY OVERNIGHT TO TAIPEI

Arrive in Taiwan's capital, Taipei, and transfer to your hotel. Depending on your time of arrival, the remainder of the day is at leisure to start soaking up the local culture. Taipei is a laidback yet vibrant city, blending ultramodern style with rich heritage. It's a bastion of Taiwan's unique fusion of Japanese and Southeast Asian influences.

DAY 3: EXPLORE TAIPEI

Today you will explore Taipei, starting with a visit to the National Palace Museum, home to thousands of artifacts and artworks including many from the Ming and Qing dynasties. Then explore the 18th-century Longshan Temple before admiring the Chiang Kai-shek (CKS) Memorial Hall, a grand monument dedicated to the former leader. Take the high-speed elevator to the observation deck on the 89th floor of Taipei 101 for a birds-eye view of the city. This evening, visit one of Taipei's iconic night markets, where you can sample a delicious array of local street food.

DAY 4: RIDE THE PINGXI LINE

Travel to Ruifang for a day tour along the scenic Pingxi Line, a historic eight-mile railway once used for coal transport. Today, it winds through mountain cliffs, streams, waterfalls, and old mining towns. Stop to explore along the way, including Pingxi Old Street, Shifen Waterfall, and Shifen Old Street, where you'll witness the beautiful tradition of locals releasing sky lanterns with their wishes. End the day in Jiufen, a picturesque town of lantern-lit lanes, teahouses, and sweeping ocean views, then return to Taipei.

DAY 5: TRAVEL TO SUN MOON LAKE

This morning travel to the picturesque Sun Moon Lake, a designated National Scenic Area. Visit a tea plantation set among rolling hills and enjoy a tasting, then explore the imposing Wenwu Temple, perched on the lake's shore with beautiful views. Head out onto the lake itself on a cruise and relax into panoramas of forested shores, turquoise blue waters and the mountains beyond.

DAY 6: TRAVEL TO ALISHAN

Take a final glimpse at Sun Moon Lake's beauty before heading to the Bantaoyao Craft Park. A former pottery factory, here you'll take part in a mosaic experience, learning the correct technique and decorating your own tile. Continue to Yuyupas, a cultural park where you can discover more about the indigenous Tsou Tribe. Take part in a coffee tasting, sampling beans grown and handpicked in Alishan's lush mountain farms.



Visit the Chiang Kai-shek Memorial Hall



Explore tea plantations



Walk the atmospheric lanes of Jiufen

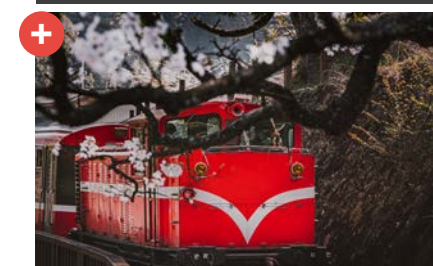
DAY 7: BOARD THE FOREST TRAIN

Rise early this morning to take the Alishan Forest Train to the Zhushan Sunrise Platform for spectacular dawn views (weather dependent). Then explore the beautiful Alishan Forest Recreation Area and ride the Forest Train once more – the highest narrow-gauge railway in Asia – as it winds through scenic mountain forests. Continue your sightseeing around Alishan stopping at natural sights such as the Sister Pond, Brother Tree and Three Generation Tree.

DAY 8: RETURN TO TAIPEI

This morning, head to Fenqihu, an old mountain village where you can wander its charming streets before enjoying its famous old-style bento box for lunch. Then, transfer to Chiayi train station to board a high-speed train to Taipei, reaching speeds of up to 300km per hour. On arrival, transfer to your hotel where you'll sit down to a farewell dinner with your travel companions.

SEE CHERRY BLOSSOMS



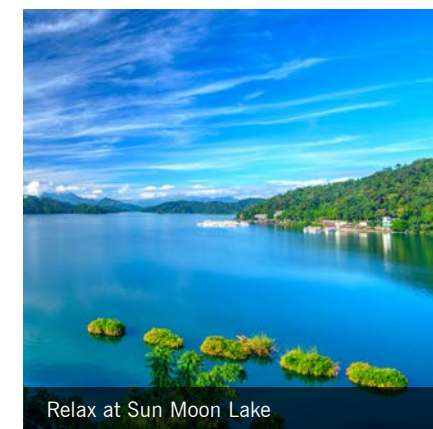
Travelling in March offers the chance to experience the magic of Alishan as its cherry blossoms burst into bloom.

DAY 9: FLY TAIPEI TO UK

Fly back to the UK, arriving home the same or following day.



Travel on the famous Pingxi line



Relax at Sun Moon Lake

TAIWAN BY RAIL

CLASSIC
TAIWAN

PHYSICAL RATING



IS THIS TOUR FOR YOU?

A less explored nation with its captivating combination of old and new, natural beauty and high-tech modernity, exploring Taiwan on an itinerary that features two historic railways and a journey on a high-speed train, is a glorious adventure.

PRICES & DEPARTURES

Departing Wednesday returning Thursday

2026 DATES

11 Mar - 19 Mar	£3,890	14 Oct - 22 Oct	£3,790
06 May - 14 May	£3,790	04 Nov - 12 Nov	£3,790
09 Sep - 17 Sep	£3,790		

2027 DATES

10 Mar - 18 Mar	£4,090	08 Sep - 16 Sep	£3,990
24 Mar - 01 Apr	£4,090	13 Oct - 21 Oct	£3,990
07 Apr - 15 Apr	£3,990	20 Oct - 28 Oct	£3,990
21 Apr - 29 Apr	£3,990	03 Nov - 11 Nov	£3,990
05 May - 13 May	£3,990		

Flight and supplement information

- Based on London Heathrow departures
- Regional UK departures available
- Flight upgrades available on request
- Land only from £2,990 (Taipei - Taipei)
- Single room from £880
- Tipping paid locally US\$55 (2026), US\$60 (2027)

Call for our 2028 pricing and departures

+ EXTEND YOUR STAY...

HONG KONG GLIMPSES

3 days from £390pp

BEIJING STOPOVER

3 days from £430pp

Visit page 52 to learn more about all of our short stays and stopovers.

CLASSIC SOUTH KOREA

5 DAYS

TOUR TICKLIST

- ✓ See Gyeongbok Palace
- ✓ Taste delicious Korean street food
- ✓ Explore historic Gyeongju
- ✓ Admire UNESCO-listed Bulguksa Temple
- ✓ Ride a Korean bullet train



Discover the Bulguksa Temple and Seokguram Grotto

Prices are from per person, based on low season

CATEGORY	TWIN SHARE	SOLO TRAVELLER
Standard	£2,530	£4,080
Superior	£2,730	£4,480
Deluxe	£3,210	£5,140

Price includes:

- Accommodation (3 nights Seoul, 1 night Gyeongju)
- Meals as stated (B,L,D)
- Transportation as stated
- Private touring with guides and entrance fees

Note: This short stay is usually available with no additional flight costs if travelling with Asiana Airlines.



Visit Bulguksa Temple



Enjoy delicious street food

ITINERARY

DAY 1: ARRIVE SEOUL

Make your way to Seoul, South Korea's capital. Upon arrival, you will be met by your driver and transferred to your hotel. The rest of your day is at leisure to explore the city's temples and palaces amongst the glittering skyscrapers and neon billboards. Perhaps take advantage of Seoul's foodie credentials – the street snacks are second to none!

DAY 2: EXPLORE SEOUL

Take a full day to explore some of Seoul's many treasures with a local guide. Start at Gyeongbok Palace, the country's most famous and beautiful royal palace (closed on Tuesdays). Explore the palace grounds and witness the Royal Guard Changing Ceremony. Stop by Gwangjang Market, where you may like to sample some of Seoul's best street food (payable locally). Finally, visit the hillside Namsan Park and its N Seoul Tower. Please note you may visit an alternative park in cherry blossom season, depending on your guide's recommendation. (B)

DAY 3: HISTORIC GYEONGJU

Transfer to Seoul station for the KTX bullet train to Gyeongju; a cross-country journey of approximately 2 hours and 45 minutes. Located in the southeastern corner of North Gyeongsang Province, this UNESCO-listed city was the ancient capital of the Silla Kingdom, the easternmost of Korea's historic Three Kingdoms. The Silla Kingdom, which existed from 57BC to 935AD, peaked between the 7th and 9th centuries. Today, the city of Gyeongju is a living museum, brimming with Silla heritage sites from

tombs and temples to pagodas and palaces. On arrival, meet your driver and enjoy lunch before discovering historic Gyeongju. Head to Mount Tohamsan and the UNESCO-listed site of Bulguksa Temple and Seokguram Grotto. The temple is considered a masterpiece of Silla architecture, whilst Seokguram Grotto, a hermitage, is home to some of the world's best Buddhist sculptures. Later, enjoy the views around Bomun Lake. Stay overnight in Gyeongju. (B,L)

DAY 4: RETURN TO SEOUL

Meet your driver-guide to further explore Gyeongju. Start at the National Museum and marvel at its collection of Silla relics. Continue to Tumuli Park with its many royal tombs before heading to the 7th-century Cheomseongdae Observatory, the oldest surviving observatory in East Asia. Finally, visit Anapji Pond. Return by bullet train to Seoul, where the evening is at leisure. (B,L)

DAY 5: DEPART SEOUL

Your day is at leisure until the time comes to transfer to the airport for your onward flight. (B)

TAIWAN EXPRESS

8 DAYS

TOUR TICKLIST

- ✓ Ride the Pingxi Valley line
- ✓ Ascend Taipei 101
- ✓ Unwind at Sun Moon Lake
- ✓ Explore beautiful Alishan
- ✓ Journey on the high-speed rail



Ride the scenic Alishan Forest train

Prices are from per person, based on low season

CATEGORY	TWIN SHARE	SOLO TRAVELLER
Standard	£2,490	£4,390

Price includes:

- 3-4 star accommodation (4 nights Taipei, 1 night Sun Moon Lake, 2 nights Chiayi)
- Meals as stated (B,L,D)
- Transportation as stated
- Private touring with guides and entrance fees

Note: This extension is usually available with no additional flight costs if flying with China Airlines.



Indulge in Taipei's street food



Explore Alishan's tea gardens

ITINERARY

DAY 1: ARRIVE TAIPEI

Arrive in Taiwan's vibrant capital, Taipei, where you'll be met and transfer to your hotel.

DAY 2: RIDE THE PINGXI LINE

After breakfast, head to Taipei railway station by metro. Board the train to Ruifang, where you start your guided tour along the scenic eight-mile Pingxi Line. There are 12 stations on Pingxi Line and your guide will recommend the best places to hop on and off to explore the country villages and waterfalls. A stop at Shifen Old Street is a must for all travellers, where you can purchase a sky lantern to carry wishes and hopes for the future. Return to Taipei by train. (B,L)

DAY 3: EXPLORE TAIPEI

Today you will explore Taipei with your local guide, using the city's public transport system. Start with a visit to the National Palace Museum, home to thousands of artifacts and artworks that showcase 8,000 years of Chinese history, before admiring the Chiang Kai-shek (CKS) Memorial Hall, a monument dedicated to the former leader. Next, take to the skies via a high-speed elevator up to the observation deck on the 89th floor of Taipei 101 for a birds-eye view of the city. Later, explore the 18th-century Longshan Temple, and in the evening, visit one of Taipei's bustling night markets, famous for their snack-focused, tasty street food. (B,L)

DAY 4: TRAVEL TO SUN MOON LAKE

This morning travel to Sun Moon Lake, a designated National Scenic Area. Explore a tea plantation set in picturesque rolling hills complete with tea tasting, then visit the imposing Wenwu Temple, built on the shore of the lake with beautiful views. Set sail on a cruise of the lake itself soaking up spectacular

panoramas of forested shores, turquoise blue waters and the mountains beyond. (B)

DAY 5: TRAVEL TO CHIAIYI

Travel to Bantaoyao Craft Park, a former pottery factory where you'll take part in a mosaic workshop - learning the proper technique and decorating your own tile. Lunch today will be traditional hot pot, cooking various meats and vegetables in a delicious broth. This afternoon, visit the Museum of Old Taiwan Tiles. (B,L)

DAY 6: RIDE THE FOREST TRAIN

Travel to Yuyupas, a cultural park where you can learn about the indigenous Tsou Tribe and enjoy a coffee or tea tasting experience. Then begin your exploration of the beautiful Alishan Forest Recreation Area and ride the scenic Alishan Forest Train -the highest narrow-gauge railway in Asia -as it winds through dense forest. Continue your sightseeing around Alishan stopping at natural sights such as the Sister Pond, Brother Tree and Three Generation Tree. (B)

DAY 7: RETURN TO TAIPEI

Journey back to Taipei, pausing en route at the fascinating Changhua Roundhouse, a railway roundhouse built in 1922. You'll also visit Lukang Old Street, known for its many temples and atmospheric narrow lanes. Then, transfer to Changhua train station to board a high-speed train to Taipei, reaching speeds of up to 300km per hour. On arrival you'll transfer to your hotel where the rest of the evening is at leisure. (B,L)

DAY 8: FLY TAIPEI TO UK

Fly home to the UK, arriving home the same or following day. (B)



Discover China & Central Asia with Wendy Wu Tours

China and Central Asia are lands of unrivalled history, diverse cultures, and stunning landscapes. With our expertise, we reveal every extraordinary corner; here are some of our favourite destinations...

WENDY'S TOP 9 CHINA & CENTRAL ASIA SIGHTS

1

BEIJING

Capital city, imperial treasure trove and home to the Forbidden City and the Great Wall of China, Beijing is featured on the majority of China tours.

2

XIAN

Xian is best known for the Terracotta Warriors. With its illustrious past and rich history, it's a must-see on most of our China tours.

3

SHANGHAI

Shanghai, China's great metropolis, appears on most itineraries. Here, East and West collide on streets lined with futuristic skyscrapers and 10th-century temples.

4

CHENGDU

The gateway to Sichuan province and the home of the cuddly giant panda. As we all love pandas, Chengdu appears on a number of tours.

5

YANGTZE RIVER

China's vital waterway brings together a plethora of unmissable sights. A Yangtze River cruise is included on a number of our tours.

6

GUILIN

Cruise through the breathtaking landscapes of the Li River to vibrant Yangshuo. Both Guilin and Yangshuo are featured on a number of tours.

7

ZHANGJIAJIE

A landscape of towering sandstone pillars, lush forests, glass bridges, and misty peaks that inspired Avatar's floating mountains.

8

QINGHAI-TIBET TRAIN

Journey on the 21-hour sleeper train from Xining to Lhasa, the world's highest railway, reaching over 5,000 meters through stunning Himalayan landscapes.

9

TASHKENT

Uzbekistan's bustling capital. Explore grand mosques, colourful bazaars, leafy boulevards, and striking Soviet-era architecture.

IN PURSUIT OF PANDAS

- 10 DAYS FROM
- PER PERSON £3,090
- FLIGHT INCLUSIVE FROM THE UK
- ALL MEALS

TOUR TICKLIST

- ✓ Walk on the Great Wall
- ✓ Feast on Peking duck
- ✓ Explore the Summer Palace
- ✓ Face the Terracotta Army
- ✓ Travel on a bullet train
- ✓ Watch giant pandas play

PRICE INCLUDES

- 8 breakfasts, 7 lunches & 8 dinners
- International flights and current taxes
- Domestic transportation
- 4 star accommodation
- Touring with guides and entrance fees
- Visa fees for UK passport holders



Watch a dazzling Tang Dynasty performance

▶ AUTHENTIC EXPERIENCES

- ▶ Savor traditional Shui Jiao dumplings, a Chinese culinary delight with savory fillings and be immersed in the Tang Dynasty's opulence through a vibrant dancing show, capturing the elegance and cultural richness of ancient China.
- ▶ Indulge in a traditional Sichuanese dinner in Chengdu, where savoury, tangy, and spicy flavours mingle with the signature mild numbing sensation of Sichuan peppercorns.
- ▶ At the heart of a huge tea-producing region and once a stop on the Tea Horse Road, drinking tea is an essential element of life in Chengdu. Visit a traditional tea house to experience the history, customs and taste the perfect brew.



See pandas at Dujiangyan Panda Base and Chengdu Panda Reserve

ITINERARY

DAYS 1-2: FLY OVERNIGHT TO BEIJING

Fly overnight to Beijing, China's historic capital. Depending on your time of arrival, the rest of the day is yours to start soaking up the local culture.

DAY 3: IMPERIAL BEIJING

Begin in Beijing's symbolic heart with a stroll across vast Tiananmen Square, flanked by grand government buildings and Mao's mausoleum. Step into the Forbidden City, a maze of golden rooftops, serene courtyards and imperial treasures, once home to China's emperors. Later, wander through the Temple of Heaven, a vision of Ming design and harmony, then savour a dinner of Peking duck, Beijing's cherished local delicacy.

DAY 4: THE GREAT WALL

This morning is dedicated to China's most iconic sight – the Great Wall. Stretching thousands of miles from the Yellow Sea to the Gobi Desert, over all sorts of dramatic landscapes, it is one of the world's most impressive feats of engineering. Taking a walk on the wall is the best way to appreciate its incredible scale and the magnificent views. Later, spend a peaceful afternoon wandering the exquisite gardens of the Summer Palace. You'll also stop by a jade factory to learn about this precious stone and have the opportunity to purchase a handcrafted piece. A spectacular Chinese acrobatic show rounds off the day.

DAY 5: SHUI JIAO DUMPLINGS

Take the bullet train to Xian. An illustrious and age-old city, Xian is one of the four great ancient capitals of China. It is also the capital of Shaanxi province and the starting point of

the fabled Silk Road with a history spanning 3,100 years. Tonight, enjoy a delicious feast of traditional Shui Jiao dumplings and a performance of Tang Dynasty dancing.

DAY 6: TERRACOTTA WARRIORS

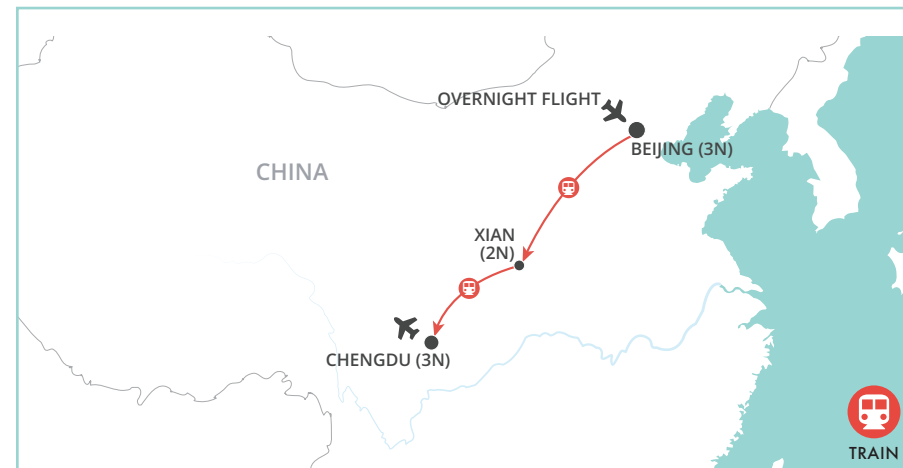
After their fortuitous discovery by local farmers in the 1970s, the Terracotta Army of China's first emperor, Qin Shi Huang, has intrigued visitors ever since. Spend the morning viewing the enigmatic ranks of life-sized warriors and horses who stand in their original formations at the exact location they were excavated. Visit the workshop of the craftsmen who recreate terracotta warriors in the style of their ancient counterparts. Watch the skilled production process and perhaps buy a souvenir warrior to take home. Later, enjoy a leisurely stroll along the beautifully preserved 14th-century city walls that encircle Xian's old town and stop at a local brewery for a refreshing beer tasting.

DAY 7: YUANJIA VILLAGE

Step back in time with a visit to Yuanjia Village, a beautifully restored heritage village offering a glimpse into Qing Dynasty architecture, traditional crafts, and authentic local flavours. Later, board a bullet train to Chengdu, the vibrant capital of Sichuan province.

DAY 8: DUJIANGYAN PANDA BASE

This morning visit Dujiangyan Panda Base for your first panda encounter! Located 1.5 hours outside of Chengdu, this centre is dedicated to the study of disease control and the rescue of wild pandas – the perfect place to gain insight into the hard work that goes into caring for and boosting the population of this



Walk on the mighty Great Wall



Gaze at the Terracotta Warriors in Xian

endangered species. Later, enjoy the atmosphere of Jinli Street – a lively street lined with antique shops and restaurants before sampling a delicious Sichuanese meal.

DAY 9: CHENGDU PANDA RESERVE

Your second panda experience will take place at Chengdu's famous Panda Conservation Centre, located right in the city. An education centre and breeding facility, here you'll see both pandas and red pandas up close as they chomp through piles of bamboo, sleep and play, and learn all about their physiology and conservation. Back in Chengdu, enjoy a cup of tea at a traditional teahouse, then visit Matchmaker's Corner, where parents search for worthy suitors for their children.

DAY 10: FLY CHENGDU TO UK

Fly to the UK, arriving home the same or following day.



Walk across Tiananmen Square into the sprawling Forbidden City

EXTEND YOUR STAY...



SHANGHAI SHORT STAY

3 days from £460pp

HONG KONG FOCUS STOPOVER

4 days from £740pp

HONG KONG GLIMPSES STOPOVER

3 days from £390pp

Visit page 52 to learn more about all of our short stays and stopovers.

IN PURSUIT OF PANDAS

CLASSIC CHINA

PHYSICAL RATING



IS THIS TOUR FOR YOU?

Discover the imperial treasures of historic Beijing, then journey through atmospheric Xian with its Terracotta Warriors to reach the charming city of Chengdu, where you will see the captivating giant pandas, not once, but twice!

PRICES & DEPARTURES

2026 - Departing Sunday returning Tuesday
2027 - Departing Tuesday returning Thursday

2026 DATES

22 Mar - 31 Mar	£3,190	06 Sep - 15 Sep	£3,390
05 Apr - 14 Apr	£3,390	13 Sep - 22 Sep	£3,390
12 Apr - 21 Apr	£3,390	11 Oct - 20 Oct	£3,390
19 Apr - 28 Apr	£3,690	18 Oct - 27 Oct	£3,290
10 May - 19 May	£3,390	01 Nov - 10 Nov	£3,690
17 May - 26 May	£3,390	08 Nov - 17 Nov	£3,290
07 Jun - 16 Jun	£3,290		

2027 DATES

09 Mar - 18 Mar	£3,090	10 Aug - 19 Aug	£3,490
23 Mar - 01 Apr	£3,390	07 Sep - 16 Sep	£3,490
06 Apr - 15 Apr	£3,490	14 Sep - 23 Sep	£3,490
13 Apr - 22 Apr	£3,490	21 Sep - 30 Sep	£3,890
20 Apr - 29 Apr	£3,890	12 Oct - 21 Oct	£3,490
11 May - 20 May	£3,490	19 Oct - 28 Oct	£3,490
18 May - 27 May	£3,490	02 Nov - 11 Nov	£3,390
08 Jun - 17 Jun	£3,490	16 Nov - 25 Nov	£3,090

Flight and supplement information

- Based on London Heathrow departures
- Regional UK departures available
- Flight upgrades available on request
- Land only from £2,390 (Beijing – Chengdu)
- Single room from £400
- Tipping paid locally RMB 495 (2026 & 2027)

Dedicated solos departure

Call for our 2028 pricing and departures



Visit a traditional teahouse in Chengdu

MAJESTIC YANGTZE

14 DAYS FROM

PER PERSON
£3,990

FLIGHT INCLUSIVE
FROM THE UK

ALL MEALS

TOUR TICKLIST

- ✓ Admire Shanghai's bright lights
- ✓ Cruise the Yangtze River
- ✓ Watch giant pandas play
- ✓ Face the Terracotta Army
- ✓ Walk on the Great Wall
- ✓ Discover ancient Ciqikou

PRICE INCLUDES

- 12 breakfasts, 11 lunches & 12 dinners
- International flights and current taxes
- Domestic transportation
- 4 star accommodation
- Touring with guides and entrance fees
- Visa fees for UK passport holders



Get a sky-high view of Shanghai

► AUTHENTIC EXPERIENCES

- Soaring above Shanghai's Pudong skyline, Jin Mao Tower blends modern engineering with traditional Chinese design. Head to the top for sweeping views over the Huangpu River and historic Bund.
- Explore the narrow cobbled lanes of Ciqikou's old town, a district known for its porcelain production during the Ming and Qing dynasties as well as its traditional architecture.
- Cruise through Qutang, Wu and Xiling gorges, otherwise known as the Three Gorges, admiring the magnificent scenery from the comfort of your Yangtze River cruise vessel and learning about its epic history from your onboard expert.



Discover the Yangtze River on your four-night cruise

ITINERARY

DAYS 1-2: FLY OVERNIGHT TO SHANGHAI

Fly overnight to the cosmopolitan city of Shanghai, also known as the 'Paris of the East'. Depending on your time of arrival, the rest of the day is yours to start soaking up the local culture.

DAY 3: EXPLORE SHANGHAI

Today explore the classical Yu Garden, stroll through the charming old town, visit a silk mill and take in sweeping views of Shanghai's stunning skyline from Jinmao Tower. Later, admire the magnificent colonial architecture with a stroll along the Bund and view the city from the Huangpu River on a panoramic cruise. The skyscrapers and glimmering lights are a sight to behold. Tonight, savour some traditional Shanghainese cuisine.

DAY 4: TRAIN TO YICHANG

Take the bullet train to Yichang and board your home for the next four nights – a relaxing cruise along the majestic Yangtze River.

DAYS 5-7: YANGTZE RIVER CRUISE

A man-made marvel, the Three Gorges Dam showcases a massive feat of engineering. But as you cruise upstream nature takes over, revealing some of the world's most dramatic scenery including the Three Gorges themselves. Over the next three days, enjoy a range of shore excursions and onboard entertainment. Take a scenic side trip to either the tranquil Shennong or Goddess Stream, where smaller boats allow for deeper exploration of lush gorges and hidden valleys.

DAY 8: HISTORIC CIQIKOU

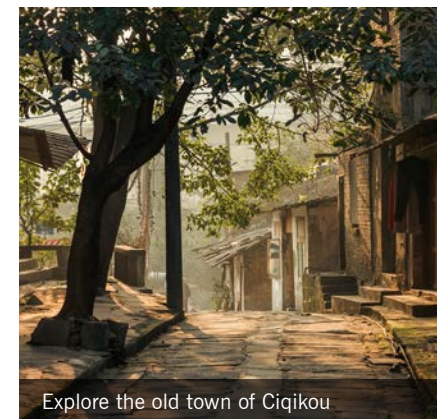
Disembarking the cruise vessel in Chongqing, explore old Ciqikou, a district known for its porcelain production during the Ming and Qing dynasties. Ciqikou's narrow streets are perfect for a morning stroll to admire the historical, traditional architecture. Transfer to Chengdu and enjoy a delicious Sichuanese meal for dinner with the option of a performance of Sichuan Opera, famous for its 'face-changing'.

DAY 9: PANDAS

Start your day with a visit to Chengdu's renowned Panda Conservation Base, where you can see and learn about China's cherished pandas in a habitat mirroring their natural surroundings. Explore the museum to gain insights into the reserve's breeding efforts. Later, take a bullet train to the former imperial capital of Xian. This evening a delicious feast of traditional Shui Jiao dumplings and a captivating performance of Tang Dynasty dancing awaits.

DAY 10: TERRACOTTA WARRIORS

After their fortuitous discovery in the 1970s, the Terracotta Army of China's first emperor, Qin Shi Huang, has intrigued visitors ever since. Spend the morning viewing the enigmatic ranks of life-sized warriors and horses, and visit the workshop of the craftsmen who recreate terracotta warriors in the style of their ancient counterparts. Later, enjoy a leisurely stroll along the beautifully preserved 14th-century city walls that encircle Xian's old town, stop at a local brewery for a refreshing beer tasting, then walk through the atmospheric alleys of the Muslim Quarter.



Explore the old town of Ciqikou



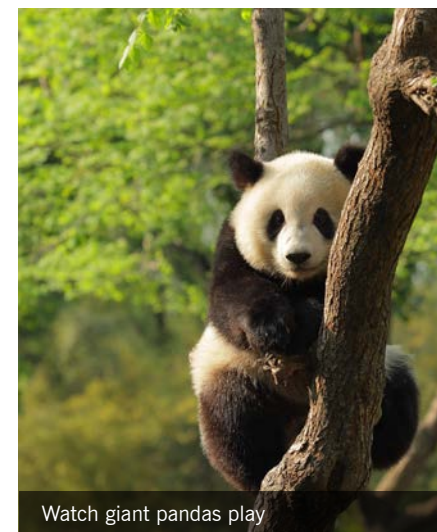
Feel peaceful at the Temple of Heaven

DAY 11: BULLET TRAIN TO BEIJING

Board the bullet train to Beijing, a fast-paced capital where modern life meets 3,000 years of rich, tumultuous history.

DAY 12: IMPERIAL BEIJING

Head to Tiananmen Square, Beijing's symbolic heart, and into the sprawling magnificence of the Forbidden City. Entering through the Gate of Supreme Harmony, you will find a complex full of imperial riches. Later, stroll through the peaceful grounds of the Temple of Heaven, where emperors once prayed for good harvests. As evening falls, enjoy a dazzling Chinese acrobatic show – a thrilling display of skill, strength, and tradition.



Watch giant pandas play

DAY 13: THE GREAT WALL

This morning is dedicated to China's most iconic sight – the Great Wall. Taking a walk on this incredible structure is the best way to appreciate both the sheer magnificence of the wall itself and the dramatic scenery that it crosses. Next, visit a jade factory then enjoy the idyllic landscapes of the Summer Palace as you wander through traditional Chinese gardens. This evening, savour Beijing's best-known delicacy – Peking duck.

DAY 14: FLY BEIJING TO UK

Fly to the UK, arriving home the same or following day.

EXTEND YOUR STAY...



ESSENTIAL DUBAI STOPOVER

3 days from £220pp

DUBAI & THE DESERT

4 days from £330pp

Visit page 52 to learn more about all of our short stays and stopovers.

MAJESTIC YANGTZE

CLASSIC
CHINA

PHYSICAL RATING



IS THIS TOUR FOR YOU?

One of our most popular tours covers the enthralling cities of Shanghai, Xian, Beijing as well as the unforgettable giant pandas of Chengdu. The highlight, though, is a relaxing four-night cruise on the majestic Yangtze River.

PRICES & DEPARTURES

Departure days of the week vary

2026 DATES

18 Mar - 31 Mar	£3,990	20 Jul - 02 Aug	£4,290
23 Mar - 05 Apr	£3,990	03 Aug - 16 Aug	£4,290
30 Mar - 12 Apr	£4,090	10 Aug - 23 Aug	£4,290
06 Apr - 19 Apr	£4,090	31 Aug - 13 Sep	£4,090
08 Apr - 21 Apr	£4,790	02 Sep - 15 Sep	£4,090
13 Apr - 26 Apr	£4,090	07 Sep - 20 Sep	£4,090
17 Apr - 30 Apr	£4,090	09 Sep - 22 Sep	£4,790
27 Apr - 10 May	£4,090	14 Sep - 27 Sep	£4,090
04 May - 17 May	£4,090	16 Sep - 29 Sep	£4,090
06 May - 19 May	£4,790	05 Oct - 18 Oct	£4,090
11 May - 24 May	£4,090	07 Oct - 20 Oct	£4,790
18 May - 31 May	£4,090	12 Oct - 25 Oct	£4,090
25 May - 07 Jun	£4,090	19 Oct - 01 Nov	£4,090
01 Jun - 14 Jun	£3,990	26 Oct - 08 Nov	£4,090
08 Jun - 21 Jun	£3,990	04 Nov - 17 Nov	£3,990
13 Jul - 26 Jul	£4,290	09 Nov - 22 Nov	£3,990

2027 DATES

10 Mar - 23 Mar	£3,990	12 Jul - 25 Jul	£4,290
17 Mar - 30 Mar	£4,090	19 Jul - 01 Aug	£4,290
22 Mar - 04 Apr	£4,190	02 Aug - 15 Aug	£4,290
29 Mar - 11 Apr	£4,190	09 Aug - 22 Aug	£4,290
05 Apr - 18 Apr	£4,190	30 Aug - 12 Sep	£4,190
09 Apr - 22 Apr	£4,990	01 Sep - 14 Sep	£4,190
12 Apr - 25 Apr	£4,190	06 Sep - 19 Sep	£4,190
14 Apr - 27 Apr	£4,190	10 Sep - 23 Sep	£4,990
26 Apr - 09 May	£4,190	13 Sep - 26 Sep	£4,190
03 May - 16 May	£4,190	15 Sep - 28 Sep	£4,190
05 May - 18 May	£4,190	04 Oct - 17 Oct	£4,190
10 May - 23 May	£4,190	08 Oct - 21 Oct	£4,990
14 May - 27 May	£4,990	11 Oct - 24 Oct	£4,190
17 May - 30 May	£4,190	18 Oct - 31 Oct	£4,090
24 May - 06 Jun	£4,190	25 Oct - 07 Nov	£4,090
31 May - 13 Jun	£4,190	03 Nov - 16 Nov	£4,090
07 Jun - 20 Jun	£4,190	08 Nov - 21 Nov	£3,990

* Departing Wednesday returning Tuesday.

Flight and supplement information

- Based on London Heathrow departures
- Regional UK departures available
- Flight upgrades available on request
- Land only from £3,290 (Shanghai – Beijing)
- Single room from £760
- Tipping paid locally RMB 700 (2026), RMB 735 (2027)

Dedicated solos departure

Call for our 2028 pricing and departures

TIBETAN RAILROAD

17 DAYS FROM

PER PERSON
£5,490

FLIGHT INCLUSIVE
FROM THE UK

MOST MEALS

TOUR TICKLIST

- ✓ Face the Terracotta Warriors
- ✓ Wander the Barkhor circuit
- ✓ Watch monks debate at Sera
- ✓ Cross the Tibetan Plateau
- ✓ Witness sunrise over Mt Everest
- ✓ Explore magnificent Potala Palace



Ride the highest railway in the world

PRICE INCLUDES

- 14 breakfasts (B), 12 lunches (L) & 12 dinners (D)
- International flights and current taxes
- Domestic transportation
- 3 – 4 star accommodation, plus a simple Tibetan guesthouse
- Touring with guides and entrance fees
- Visa fees for UK passport holders



Overnight on the Qinghai-Tibet train

► AUTHENTIC EXPERIENCES

- Overnight on the 21-hour sleeper train between Xining and Lhasa. Barren plateau, snow-capped peaks, desert, grassland, and lakes will all pass your window before crossing the Tanggula Pass which at 5,231 metres is the highest point of any railway in the world.
- Visit the Tsang Traditional Folk House, a beautifully preserved example of Tibetan architecture. Try a cup of 'chang', a traditional Tibetan barley wine shared during festivals and gatherings.
- Watch the sun's rays spread over the rugged, snowy peak of Mount Everest, the world's highest mountain, in what must surely be considered one of the most dramatic and spectacular places to watch the sunrise (weather permitting).

ITINERARY

DAYS 1-2: FLY OVERNIGHT TO XIAN

Fly overnight to Xian, an ancient city with an illustrious history. Depending on your time of arrival, the rest of the day is yours to start soaking up the local culture. (D)

DAY 3: TERRACOTTA WARRIORS

After their fortuitous discovery in the 1970s, the Terracotta Army of China's first emperor, Qin Shi Huang, has intrigued visitors ever since. Spend the morning viewing the enigmatic ranks of life-sized warriors and horses. Also visit the workshop to see where the warriors are intricately recreated in the style of their ancient counterparts and stroll on the beautifully preserved 14th-century city walls that enclose Xian's old town. In the evening, enjoy a dumpling feast and Tang Dynasty dancing show. (B,L,D)

DAY 4: BULLET TRAIN TO XINING

Board the five-hour bullet train to Xining, the capital city of Qinghai province in western China. See the 618-metre-long hand-painted thangka at the Qinghai Tibet Cultural Centre, then explore the local night markets. (B,L,D)



Try delicious momos, a local favourite

DAY 5: OVERNIGHT TRAIN TO LHASA

Spend the morning exploring the sacred Kumbum Monastery, also known as Ta'er Temple. Later transfer to the railway station to embark on one of the most adventurous rail journeys out there, the 21-hour overnight train to Lhasa onboard the Qinghai-Tibet Railway. (B,L)

DAY 6: ARRIVE LHASA

Riding the highest railway in the world, under the gaze of 5,000 metre plus mountain peaks, you'll cross a range of astonishing high landscapes and traverse the breathtaking Tanggula Pass (5,231 metres) on your journey across the 'roof of the world'. Arrive in Lhasa, the heart and soul of Tibet, in the afternoon. The rest of the day is free to relax and acclimatise to the altitude. (D)

DAY 7: JOKHANG TEMPLE

Lhasa is a modern city growing fast, but among the old streets at its heart, you will feel a million miles from today's world. Wander around the Barkhor Circuit with traditionally dressed locals and prostrating pilgrims before entering the Jokhang Temple. Inside, the devotion is palpable as queues of people worship in the flickering light of yak butter candles. Continue to the great monastery of Sera, where you'll see a famous monk debate. This evening, enjoy a tasty Tibetan dinner and dance performance. (B,L,D)

DAY 8: POTALA PALACE

Visit the magnificent Potala Palace, the world's largest monastery and the seat of the Dalai Lama. Then, visit Norbulingka, the summer residence of the Dalai Lama, set in parkland just outside of the city. (B,L)



Explore Tibet's sacred monasteries



Watch the sunrise over Mt. Everest's North Face

DAY 9: TRAIN TO SHIGATSE

Travel across Tibet's stark plains to Shigatse. Dominated by a fort reminiscent of the Potala, this is Tibet's second city and the traditional seat of the Panchen Lama. Enjoy some free time to explore the local markets. (B,L,D)

DAY 10: SHIGATSE

Visit Shalu and Tashilhunpo Monastery, which was founded in 1447 by the first Dalai Lama. Join the pilgrims on their 'kora' – a circumambulation of the sacred building. (B,L,D)

DAY 11: EVEREST BASE CAMP

Rise early to drive through incredible Himalayan scenery to Rongbuk Township. Here, with Mount Everest (called Qomolangma in Tibetan) dominating the horizon, you can stop by the world's highest post office and the Everest Base Camp Boundary Monument. Situated under the gaze of the mountain's north face, the views of the world's highest peak are unsurpassed (weather permitting). Stay overnight in a simple Tibetan guesthouse. (B,L,D)

DAY 12: SUNRISE OVER EVEREST

Get up at dawn to see the most glorious sunrise over Everest (weather permitting). Return to Shigatse, via the Tso La Pass and Gyatso La Pass for awe-inspiring views. (B,L,D)

DAY 13: GYANTSE

Travel to the charming town of Gyantse, where you'll visit the Kumbum and the Tsang Traditional Folk House to see a traditional kitchen and taste some local snacks and homebrewed 'chang'. (B,L,D)

DAY 14: TSEDANG

Travel along the Brahmaputra River to Tsedang. Visit Gangpo Ri, where legend tells the Tibetan people were born. (B,L,D)

DAY 15: YUMBULHAKANG PALACE

Perched on a hill over the Yarlung River, the ancient Yumbulhakang Palace is said to have been the first building in Tibet and the palace of the first Tibetan king. Continue to Tradruk Monastery and the King's Tomb. Return to Lhasa. (B,L)

DAY 16: CHENGDU

Fly to Chengdu, transferring to your hotel on arrival. The rest of the day will be at leisure for you to relax or explore, with a farewell dinner this evening. (B,D)

DAY 17: FLY CHENGDU TO UK

Transfer to the airport for your flight back to the UK, arriving home the same or following day. (B)

EXTEND YOUR STAY...



CLASSIC SOUTH KOREA

5 days from £2,530pp

TAIWAN EXPRESS

8 days from £2,490pp

Visit page 24 to learn more about these short stay add-ons.

TIBETAN RAILROAD

GO BEYOND CHINA, TIBET

PHYSICAL RATING



IS THIS TOUR FOR YOU?

Take the world's highest railway journey to reach the 'roof of the world' where you'll be immersed in the epic landscapes and spirituality of Tibet. Much of this tour is spent at altitude, including the experience of a lifetime – a visit to Everest Base Camp.

PRICES & DEPARTURES

Departure days of the week vary

2026 DATES

01 Apr - 17 Apr	£5,490	21 Aug - 06 Sep	£5,590
10 Apr - 26 Apr	£5,490	04 Sep - 20 Sep	£5,590
08 May - 24 May	£5,490	09 Oct - 25 Oct	£5,590
22 May - 07 Jun	£5,490		

2027 DATES

03 Apr - 19 Apr	£5,590	21 Aug - 06 Sep	£5,690
10 Apr - 26 Apr	£5,590	04 Sep - 20 Sep	£5,690
08 May - 24 May	£5,590	09 Oct - 25 Oct	£5,690
22 May - 07 Jun	£5,590		

Flight and supplement information

- Based on London Heathrow departures
- Regional UK departures available
- Flight upgrades available on request
- Land only from £4,790 (Xian - Chengdu)
- Single room from £1,040
- Tipping paid locally RMB 895 (2026), RMB 940 (2027)

Call for our 2028 pricing and departures



Discover Shigatse's monasteries and markets

CHINA BY RAIL

- 22 DAYS FROM
- PER PERSON £5,790
- FLIGHT INCLUSIVE FROM THE UK
- ALL MEALS

TOUR TICKLIST

- ✓ Stay atop Yellow Mountain
- ✓ Discover old China in Dali
- ✓ Cruise the Li River
- ✓ Watch giant pandas play
- ✓ Face the Terracotta Army
- ✓ Walk on the Great Wall



Admire views atop Yellow Mountain, long a muse for Chinese poets and painters

PRICE INCLUDES

- 20 breakfasts, 19 lunches & 20 dinners
- International flights and current taxes
- Domestic transportation
- 4 star accommodation
- Touring with guides and entrance fees
- Visa fees for UK passport holders



Journey by high-speed bullet train

► AUTHENTIC EXPERIENCES

- Glide through China's diverse landscapes aboard bullet trains, experiencing speed, comfort, and modernity. Connect with locals and witness the country's dynamic transformation from the window.
- Spend the night atop Huangshan, the Yellow Mountain, to admire the beauty of its scenery, acclaimed in Chinese art and literature for centuries, in the different lights of the day.
- Visit the village of Xizhou where, as well as browsing the laden stalls of the bustling, local market, you'll be able to see members of the Naxi minority community in their colourful, traditional dress.

ITINERARY

DAYS 1-2: FLY OVERNIGHT TO SHANGHAI

Fly overnight to Shanghai, also known as the 'Paris of the East'. Depending on your time of arrival, the rest of the day is yours to start soaking up the local culture.

DAY 3: EXPLORE SHANGHAI

Shanghai is China's great metropolis, where east and west collide on streets lined with futuristic skyscrapers and 10th-century temples. Today's explorations include the Yu Garden, the old town and a silk mill. Admire the magnificent colonial architecture with a stroll along the Bund, before a trip on the super-fast electromagnetic Maglev train. This evening, view the city from the Huangpu River on a panoramic cruise and dine on delicious Shanghainese cuisine.

DAY 4: YELLOW MOUNTAIN

Embark on a scenic bullet train journey, then ride the cable car up majestic Mount Huang, commonly known as Yellow Mountain, for an unforgettable overnight stay at the summit. Enjoy the spectacular views of the oddly shaped peaks, rock formations, thousand-year-old pine trees and ever-changing mist, all of which have inspired local artists for centuries. Spend the afternoon exploring this stunning UNESCO World Heritage Site.

DAY 5: ANCIENT TUNXI

Take the cable car down to the base of the mountain and explore atmospheric Tunxi. The narrow cobbled streets are lined with pretty little shops selling anything from local snacks and tea, to paintbrushes, cultural relics and intricate wood carvings.

DAY 6: ORANGE ISLAND

Journey by bullet train to Changsha, a vibrant metropolis steeped in history and surrounded by natural beauty. Explore the bamboo and sculpture gardens of Orange Island, where a towering 32-metre statue of Chairman Mao Zedong stands. As dusk falls, indulge in the lively night market's local delicacies, a taste of Changsha's culture.

DAY 7: BULLET TRAIN TO GUILIN

Step into history at the Yuelu Academy, the historical hub of learning where ancient wisdom thrives. Then embark on a scenic journey as you traverse magnificent landscapes to reach Guilin's natural wonders.

DAY 8: DISCOVER GUILIN

Embark on a tour to Elephant Trunk Hill, the iconic rock formation resembling an elephant drinking from the Li River. This afternoon, stroll through Guilin's historic centre, visiting the Ancient South Gate and the lively East and West Alleys.

DAY 9: LI RIVER CRUISE

Take a relaxed cruise along the Li River to charming Yangshuo. Around every river bend is a view to take your breath away as jagged karst peaks loom over rural scenes of lush greenery, grazing buffalo and local fishermen. Disembark and wander Yangshuo's cobbled streets and vibrant markets. Round out the day with a soothing Chinese reflexology massage.

DAY 10: BULLET TRAIN TO KUNMING

Board the bullet train to Kunming, capital of Yunnan province.



See Dali's Three Pagodas



Visit Chengdu's Panda Centre

DAY 11: EXPLORE KUNMING

Meander through the formations of the UNESCO-listed Stone Forest, where towering limestone pillars stand tree-like in a fascinating illusion of woodland. Return to Kunming and in the evening, sample the local delicacy, Across the Bridge noodles.

DAY 12: DALI'S ANCIENT TOWN

Board the bullet train to Dali, a charming town that offers a peek at bygone China. Discover Dali's historic quarter and magnificent, age-old Three Pagodas before an evening stroll through the vibrant Foreigners' Street.

DAY 13: ENCHANTING DALI

Today, explore the village of Xizhou to browse its local market, visit the Yan family home and watch a tie-dye demonstration. Enjoy a relaxing cruise on the mirror-like waters of Erhai Lake, admiring the spectacular scenery provided by the Cang Mountains.

DAY 14: LIJIANG OLD QUARTER

Board the bullet train to Lijiang. Discover the old quarter; the quintessential Chinese 'old town' and wander the jumble of cobbled streets, traditional wooden buildings and rustic stone bridges.

DAY 15: JADE DRAGON SNOW MOUNTAIN

The Jade Dragon Snow Mountain comprises of several peaks, the tallest of which soars to 5,500 metres. Taking a cable car, explore one of the gorgeous high meadows and enjoy the amazing vistas. Later, visit Baisha old town to view its spectacular Ming Dynasty frescoes and Baisha village, a settlement of the Naxi minority people.

DAY 16: TRAVEL TO CHENGDU

Fly to Chengdu, capital of Sichuan Province.

DAY 17: GIANT PANDAS

Visit Chengdu's famous Panda Conservation Base to see and learn about these celebrated bears up close in surroundings that mirror their natural habitat. Take the bullet train to Xian, the starting point of the fabled Silk Road with a history spanning 3,100 years.

DAY 18: TANG DYNASTY DANCING

After their fortuitous discovery in the 1970s, the Terracotta Army of China's first emperor, Qin Shi Huang, has intrigued visitors ever since. Spend the morning viewing the enigmatic ranks of life-sized warriors and horses. Also visit the workshop to see where the warriors are intricately recreated in the style of their ancient counterparts and stroll on the beautifully preserved 14th-century city walls that enclose Xian's old town. In the evening, enjoy a dumpling feast and Tang Dynasty dancing show.

DAYS 19-20: IMPERIAL BEIJING

Board the bullet train to Beijing, China's historical capital. The next day, head to Beijing's symbolic heart, Tiananmen Square, and stroll into the sprawling magnificence of the Forbidden City. Entering through the Gate of Supreme Harmony, you will find a complex full of imperial riches. Later, wander through the Temple of Heaven, a vision of Ming design and harmony, then savour a dinner of Peking duck, Beijing's cherished local delicacy.

CHINA BY RAIL

CLASSIC CHINA

PHYSICAL RATING



IS THIS TOUR FOR YOU?

Embark on a modern odyssey across China, by bullet train! Mixing urban charm with natural grandeur, be captivated by the beauty of Mount Huang and the Li River, and discover the cities of Shanghai, Beijing, Kunming and Xian.

PRICES & DEPARTURES

Departing Thursday returning Thursday

2026 DATES

06 Mar - 27 Mar*	£5,790	20 Aug - 10 Sep	£5,790
02 Apr - 23 Apr	£5,790	03 Sep - 24 Sep	£5,790
07 May - 28 May	£5,790	08 Oct - 29 Oct	£5,790
21 May - 11 Jun	£5,790	15 Oct - 05 Nov	£5,790

2027 DATES

11 Mar - 01 Apr	£5,890	19 Aug - 09 Sep	£5,890
01 Apr - 22 Apr	£5,890	02 Sep - 23 Sep	£5,890
06 May - 27 May	£5,890	07 Oct - 28 Oct	£5,890
20 May - 10 Jun	£5,890	14 Oct - 04 Nov	£5,890

* Departing Friday returning Friday.

Flight and supplement information

- Based on London Heathrow departures
- Regional UK departures available
- Flight upgrades available on request
- Land only from £5,090 (Shanghai - Beijing)
- Single room from £1,200
- Tipping paid locally RMB 1010 (2026), RMB 1060 (2027)

Call for our 2028 pricing and departures

DAY 21: THE GREAT WALL

This morning is dedicated to China's most iconic sight – the Great Wall. Taking a walk on this incredible structure is the best way to appreciate both the sheer magnificence of the wall itself and the dramatic scenery that surrounds it. Visit a jade factory then spend the afternoon at the idyllic Summer Palace, wandering through traditional Chinese gardens and seeing the exquisite architecture.

DAY 22: FLY BEIJING TO UK

Transfer to the airport for your flight back to the UK, arriving home the same or following day.



Discover Lijiang's old town

SILK ROAD EXPLORER

27 DAYS FROM

PER PERSON £6,190

FLIGHT INCLUSIVE FROM THE UK

ALL MEALS

TOUR TICKLIST

- ✓ Visit Kashgar Sunday Bazaar
- ✓ Admire Jiayu Fortress
- ✓ Explore Tibetan Xiahe
- ✓ See the Rainbow Mountains
- ✓ Discover Mogao Grottoes
- ✓ Experience the Taklamakan Desert

PRICE INCLUDES

- 25 breakfasts, 24 lunches & 25 dinners
- International flights and current taxes
- Domestic transportation
- 3 star plus - 4 star accommodation
- Touring with guides and entrance fees
- Visa fees for UK passport holders



Explore Kashgar's Sunday Bazaar

► AUTHENTIC EXPERIENCES

- Wander through the bustling Sunday Bazaar in Kashgar, one of the largest and most vibrant markets in the region. Soak up the lively atmosphere as locals trade everything from spices and silks to livestock and handcrafted wares.
- Delicious Lanzhou noodles have been made for centuries in a very unique way - hand-stretching. Trying them in Lanzhou beef noodle soup is a must!
- Visit a traditional, nomadic Kazakh family in their yurt home, where you'll learn more about this minority community and their culture.



Discover Crescent Moon Spring

ITINERARY

DAYS 1-2: FLY OVERNIGHT TO XIAN

Fly overnight to Xian, the ancient former capital. Depending on your time of arrival, the rest of the day is yours to start soaking up the local culture.

DAY 3: TERRACOTTA WARRIORS

Gaze over the ranks of the Terracotta Warriors, each one unique, whilst your guide introduces you to these life-like soldiers' fascinating story. Later, enjoy a gentle cycle ride that will take you the nine miles around the ancient city wall and take a walking tour of the narrow and winding streets of the Muslim Quarter. Tonight, enjoy a traditional dumpling dinner and take an optional 'Xian by night' tour.

DAY 4: TRAIN TO LANZHOU

Start the day with a visit to the ancient City Wall Park and Sculptures of Silk Road. Later, board the bullet train to Lanzhou.

DAYS 5-6: EXPLORE LANZHOU

Begin today with a leisurely walk along the Yellow River and then head to the hilltop Baita Temple for a moment of tranquillity. Along the river and in Baita Park you can see locals practising Tai Chi. Later, tuck into some delicious Lanzhou-style noodles made with hand stretched dough. The next day, cross Liujiaxia Lake by speed boat and head into the green hills around Liujiaxia to explore the extraordinary Thousand Buddha Caves of Bingling Temple and their wealth of Buddhist murals, statues and sculptures. Also visit the statue of Maitreya.

DAY 7: TIBETAN XIAHE

Conquer the scenic Jishi Mountain Pass to arrive at Tibetan Xiahe and spend time acclimatising to the altitude.

DAY 8: LABRANG MONASTERY

Offering a taste of Tibetan mystery, visit Labrang Monastery, a fascinating maze of prayer wheels, chapels and chortens. Dine on traditional Tibetan food for lunch, including Tibetan dumplings, known as momos.

DAY 9: TRAVEL TO ZHANGYE

Return to Lanzhou and take the speedy bullet train to Zhangye, once an important commercial town along the Silk Road.

DAY 10: RAINBOW MOUNTAINS

Rise early this morning to witness the sunrise over the kaleidoscopic mountains in Danxia National Park. Return to Zhangye and visit the Giant Buddha Temple before boarding your bullet train to Jiayuguan.

DAY 11: GREAT WALL AT JIAYUGUAN

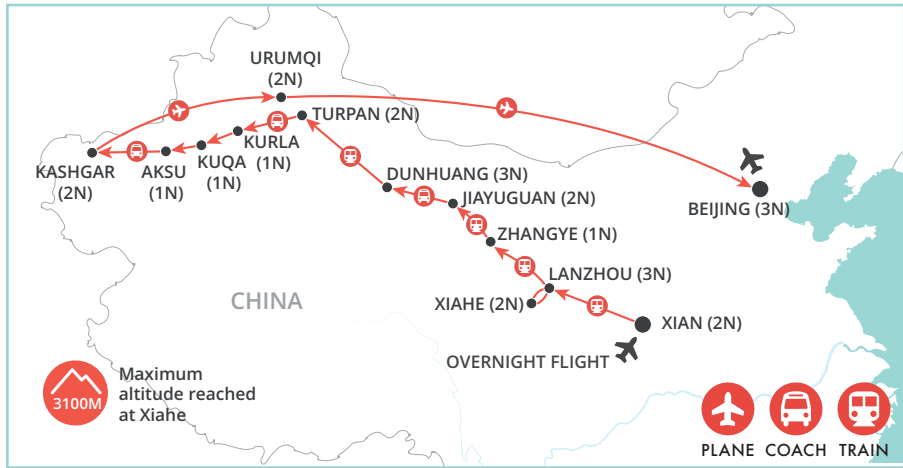
Seen as China's western gateway, Jiayuguan is the perfect place to get to grips with your Silk Road history. Visit the Jiayu Fortress and take a walk on the western extremes of the magnificent Great Wall for panoramic views over the starkly beautiful Gobi Desert.

DAY 12: CITY OF SANDS

Drive to Dunhuang. Located on a major trade and cultural crossroads, Dunhuang, known as the 'City of the Sands', sits in a verdant oasis on the edge of the Taklamakan Desert. Visit the Shazhou Night Market where you can wander amongst the stalls.

DAY 13: MOGAO GROTTOES

A system of temples and sanctuaries, visit the Mogao Grottoes that exhibit wonderful examples of Buddhist paintings and statues that span thousands of years.



Explore Labrang Monastery



Walk on the Great Wall at Jiayuguan

DAY 14: SINGING SAND DUNES

Visit Crescent Moon Spring, nestled amongst rolling dunes and the famous Singing Sand Dunes, a phenomenon produced by the wind blowing through grains of sand.

DAY 15: TURPAN

Take the bullet train to Turpan, a lush green oasis set in a barren landscape. An easy-going town famed for its grapes, its pleasant streets are lined with lush vine trellises.

DAY 16: EXPLORE TURPAN

Visit the ruins of ancient Jiaohe and see the elegant Emin Minaret, the tallest in China.

DAY 17: KURLA

Learn about the fascinating 2000-year-old Karez irrigation canals and drive to Kurla.

DAYS 18-20: THE SILK ROAD

Over the next three days travel along the original Silk Road through the Xinjiang Region, viewing ruins and sights largely unvisited by tourists. Start with a visit to see the ruins of Subashi, before arriving in Kuqa to see the Kyzil Thousand Buddha Caves. Continue travelling to Aksu, and on to the fabled city of Kashgar.

DAY 21: EXPLORE KASHGAR

Its skyline punctured by minarets, Kashgar feels a million miles from China - in fact, it feels a million miles from anywhere! Although now a modern city, the sights and sounds of Kashgar's bazaar have remained unchanged for millennia. Sightseeing today includes a visit to Abakh Hoja Tomb, Id Kah Mosque and a stroll through the narrow atmospheric alleyways around Id Kah Square.

DAY 22: KASHGAR SUNDAY BAZAAR

Dive headlong into Central Asia's largest bazaar. Within this riot of textures, vivid colours and traditional dress, you can browse hundreds of stalls selling anything from spices and carpets to boots and blenders. Later, fly to Urumqi.

DAY 23: HEAVENLY LAKE

Escape to the tranquillity of Tianchi (Heavenly Lake), formed in a crater. Visit a Kazak Folk Cultural Village and spend some time learning about their way of life.

DAY 24: URUMQI

Make a short visit to the Xinjiang Museum before flying to Beijing, China's historic capital.

DAY 25: THE GREAT WALL

This morning is dedicated to China's most iconic sight - the Great Wall. Taking a walk on this incredible structure is the best way to appreciate the sheer magnificence of the wall itself. In the afternoon, enjoy the idyllic landscapes of the Summer Palace as you wander through traditional Chinese gardens and see the exquisite architecture.

DAY 26: IMPERIAL BEIJING

Head to Beijing's symbolic heart, Tiananmen Square and into the sprawling magnificence of the Forbidden City where you will find a complex full of imperial treasures. Soak up the ambience of the Temple of Heaven then dine on Peking duck and enjoy a Chinese acrobatic show.

DAY 27: FLY BEIJING TO UK

Fly to the UK, arriving home the same or following day.

SILK ROAD EXPLORER

GO BEYOND CHINA

PHYSICAL RATING



IS THIS TOUR FOR YOU?

Follow in the footsteps of intrepid adventurers by journeying along one of the world's most famous trading routes, the Silk Road. Beginning in ancient Xian, venture across this vast land to Kashgar. Expect long journeys on this tour.

PRICES & DEPARTURES

Departing Sunday returning Friday

2026 DATES

05 Apr - 01 May	£6,190	07 Jun - 03 Jul	£6,190
03 May - 29 May	£6,190	30 Aug - 25 Sep	£6,190
10 May - 05 Jun	£6,190	06 Sep - 02 Oct	£6,190
17 May - 12 Jun	£6,190	04 Oct - 30 Oct	£6,190
24 May - 19 Jun	£6,190	11 Oct - 06 Nov	£6,190

2027 DATES

04 Apr - 30 Apr	£6,390	30 May - 25 Jun	£6,390
02 May - 28 May	£6,390	29 Aug - 24 Sep	£6,390
09 May - 04 Jun	£6,390	05 Sep - 01 Oct	£6,390
16 May - 11 Jun	£6,390	03 Oct - 29 Oct	£6,390
23 May - 18 Jun	£6,390	10 Oct - 05 Nov	£6,390

Flight and supplement information

- Based on London Heathrow departures
- Regional UK departures available
- Flight upgrades available on request
- Land only from £5,490 (Xian - Beijing)
- Single room from £1,290
- Tipping paid locally RMB 1360 (2026), RMB 1430 (2027)

Call for our 2028 pricing and departures



Travel along the Silk Road by rail

ULTIMATE CHINA

27 DAYS FROM
PER PERSON £6,990
FLIGHT INCLUSIVE FROM THE UK
ALL MEALS

TOUR TICKLIST

- ✓ Walk on the Great Wall
- ✓ Gaze at the Terracotta Warriors
- ✓ Visit the Stone Forest
- ✓ Explore spectacular Zhangjiajie
- ✓ Stay in mystical Lhasa
- ✓ Cruise the Yangtze River

PRICE INCLUDES

- 25 breakfasts, 24 lunches & 25 dinners
- International flights and current taxes
- Domestic transportation
- 4 star accommodation
- Touring with guides and entrance fees
- Visa fees for UK passport holders



Connect with Tibetan communities

► AUTHENTIC EXPERIENCES

- Venture to a Tibetan village in the highlands of Yunnan province to meet the local community, visit a traditional family home and experience the intriguing blend of the Tibetan and Chinese way of life.
- Take a deep breath and step out on Tianmen Mountain's famed glass skywalk, aptly named the 'Walk of Faith'. Hugging a cliff face, follow it around the mountain for unparalleled views of Zhangjiajie.
- Cruise on the crystal-clear, tranquil waters of Erhai Lake, admiring the views over the Cang Mountains and sailing past its multiple islands, many replete with colourful temples.



Discover the otherworldly peaks of Zhangjiajie

ITINERARY

DAYS 1-2: FLY OVERNIGHT TO BEIJING

Fly overnight to Beijing, China's historic capital. Depending on your time of arrival, the rest of the day is yours to start soaking up the local culture.

DAY 3: IMPERIAL BEIJING

This morning, head to Beijing's symbolic heart, Tiananmen Square and stroll into the sprawling magnificence of the Forbidden City. Later, soak up the harmonious ambience of the Temple of Heaven and enjoy a traditional Peking duck dinner.

DAY 4: THE GREAT WALL

This morning is dedicated to China's most iconic sight – the Great Wall. Taking a walk on this incredible structure is the best way to appreciate both the wall itself and the dramatic scenery that it crosses. Visit a jade factory then spend the afternoon in the idyllic gardens of the Summer Palace.

DAY 5: BULLET TRAIN TO XIAN

Take the bullet train to Xian and in the evening, enjoy a delicious feast of traditional Shui Jiao dumplings followed by a performance of Tang Dynasty dancing.

DAY 6: TERRACOTTA WARRIORS

After their fortuitous discovery in the 1970s, the Terracotta Army of China's first emperor, Qin Shi Huang, has intrigued visitors ever since. Spend the morning viewing the enigmatic ranks of life-sized warriors and horses. Also visit the workshop to see where the warriors are intricately recreated in the style of their ancient counterparts. After lunch, stroll along the beautifully preserved 14th-century city walls that enclose Xian's old town.

DAY 7: REED FLUTE CAVE

Fly to Guilin and visit Reed Flute Cave to see the colourful stalagmites and stalactites.

DAY 8: LI RIVER CRUISE

Take a relaxed cruise along the Li River to charming Yangshuo. Around every river bend is a view to take your breath away as jagged karst peaks loom over rural scenes of lush greenery, grazing buffalo and local fishermen. This afternoon you can spend some time browsing Yangshuo's vibrant markets.

DAY 9: YANGSHUO

Start the day with a calming Tai Chi session led by a local master, learning the flowing movements of this ancient practice. Explore the picturesque countryside then enjoy free time or opt for activities such as cycling or bamboo rafting.

DAY 10: TRAVEL TO KUNMING

Take a bullet train to Kunming, capital of Yunnan Province.

DAY 11: THE STONE FOREST

Meander through the formations of the UNESCO-listed Stone Forest, where towering limestone pillars stand tree-like in a fascinating illusion of woodland. This evening, dine on the local dish, 'Across the Bridge' noodles.

DAY 12: BULLET TRAIN TO LIJIANG

Board the bullet train to Lijiang, set in the foothills of Jade Dragon Snow Mountain.

DAY 13: JADE DRAGON SNOW MOUNTAIN

The magnificent Jade Dragon Snow Mountain



Explore Buddhist monasteries



Explore spectacular Songzanlin Temple in Zhongdian

comprises several peaks, the tallest of which soars to 5,500 metres. Taking a cable car, explore one of the gorgeous high meadows and enjoy the amazing vistas. On the way back to Lijiang, visit Baisha old town to view its spectacular Ming Dynasty frescoes and Baisha village, a settlement of the Naxi minority people.

DAY 14: TIGER LEAPING GORGE

Journey to the 3,000-metre-deep Tiger Leaping Gorge. With its backdrop of snow-capped mountains, it is one of China's most extraordinary sights. Next, continue to the monastery town of Zhongdian, also known as Shangri-La. This afternoon is at leisure to acclimatise to the altitude.

DAY 15: TIBETAN ZHONGDIAN

Begin the day with a visit to a Tibetan style village where you will learn about the villagers' way of life. Also visit Dafo Temple, explore the spectacular Songzanlin Monastery and end the day with a tour of the old town.

DAY 16: MYSTICAL LHASA

Fly to the city of Lhasa, the heart and soul of Tibet. This afternoon is at leisure to help acclimatise to the altitude.

DAY 17: THE BARKHOR CIRCUIT

Lhasa is a modern, fast-growing city, but among the narrow, old, atmospheric streets you will feel a million miles from the modern world. Wander around the Barkhor Circuit with traditionally dressed locals and explore the Jokhang Temple, the sacred centre of Tibetan Buddhism. There will also be a visit to Sera Monastery, a renowned seat of Buddhist learning, and a local Tibetan arts and crafts shop.

DAY 18: POTALA PALACE

The Potala Palace is an architectural wonder towering over the city from its seat on Marpo Ri (Red Mountain). The Potala, the former winter palace of the Dalai Lama, houses thousands of rooms filled with old treasures from intricate shrines to beautiful frescoes. This afternoon, explore Norbulingka, the former summer residence of the Dalai Lama.

DAY 19: FLY TO CHENGDU

Fly to Chengdu, capital of Sichuan Province. Take a stroll through People's Park to see Matchmaker's Corner, where parents search for suitable partners for their children.

DAY 20: PANDAS

Begin the day with a visit to Chengdu's famous conservation centre. Later, transfer to Chongqing and board your Yangtze River cruise vessel.

DAYS 21-23: YANGTZE RIVER CRUISE

Over the next three days, enjoy various side trips and shore excursions including the Three Gorges Dam. Disembark and drive to Zhangjiajie, a scenic area of over 3,000 sandstone pillars.

DAY 24: DISCOVER ZHANGJIAJIE

Zhangjiajie's forest of towering sandstone pillars is nature at its most surreal. Ride the Bailong glass elevator skywalk, soak up the incredible views before a scenic train through the Ten-Mile Natural Gallery.

DAY 25: TIANMEN MOUNTAIN

Soar up Tianmen Mountain on China's longest cable car. At the summit, climb 999 steps to the dramatic Tianmen Cave, 'Heaven's Door', and brave the thrilling glass 'Walk of Faith'. Later, fly to Shanghai.

ULTIMATE CHINA

CLASSIC CHINA, TIBET

PHYSICAL RATING



IS THIS TOUR FOR YOU?

This really is the ultimate tour for those who want to experience China and Tibet in depth! From modern cities and ancient history to rural villages and spectacular landscapes, this is the tour to discover all of China's highlights in just one visit.

PRICES & DEPARTURES

Departing Wednesday returning Monday

2026 DATES

06 May - 01 Jun	£6,990	02 Sep - 28 Sep	£6,990
13 May - 08 Jun	£6,990	07 Oct - 02 Nov	£6,990
20 May - 15 Jun	£6,990	14 Oct - 09 Nov	£6,990
26 Aug - 21 Sep	£6,990		

2027 DATES

31 Mar - 26 Apr	£7,190	01 Sep - 27 Sep	£7,190
05 May - 31 May	£7,190	06 Oct - 01 Nov	£7,190
12 May - 07 Jun	£7,190	13 Oct - 08 Nov	£7,190
25 Aug - 20 Sep	£7,190		

Flight and supplement information

- Based on London Heathrow departures
- Regional UK departures available
- Flight upgrades available on request
- Land only from £6,290 (Beijing – Shanghai)
- Single room from £1,320
- Tipping paid locally RMB 1365 (2026), RMB 1435 (2027)

DAY 26: EXPLORE SHANGHAI

Shanghai is China's great metropolis, where east and west collide on streets lined with futuristic skyscrapers and 10th-century temples. Visit the classical Yu Garden, stop in the old town, take in panoramic views from the Jinmao Tower, and admire colonial architecture on the Bund. This evening, view the city from the Huangpu River on a panoramic cruise and enjoy a meal of traditional Shanghainese cuisine.

DAY 27: FLY SHANGHAI TO UK

Fly to the UK, arriving home the same or following day.

ULTIMATE UZBEKISTAN

- 12 DAYS FROM
- PER PERSON £3,890
- FLIGHT INCLUSIVE FROM THE UK
- ALL MEALS

TOUR TICKLIST

- ✓ Visit Toprak Kala Fortress
- ✓ Explore Bukhara's monuments
- ✓ Discover Registan Square
- ✓ Shop at Chorsu bazaar
- ✓ Be mesmerised by Gur Emir's tilework
- ✓ Stroll through Ichan Kala

PRICE INCLUDES

- 10 breakfasts, 9 lunches, 10 dinners
- International flights and current taxes
- Domestic transportation
- 3 star plus - 4 star accommodation
- Touring with guides and entrance fees



Visit a family-run ceramics workshop

► AUTHENTIC EXPERIENCES

- Visit the workshop of a famous family known for their ceramics – Akbar and Alisher Rakhimov. You will learn about the history of ceramics and get to see the unique collection of their exclusive works. Enjoy a tea ceremony with local pastries baked especially for you.
- Enjoy lunch at the house of a local, who just happens to be an expert suzani (tapestry) maker! You'll dine on 'plov', the national Uzbek dish, which you'll also help to prepare - made with mutton and rice, it includes a large quantity of spices.
- Experience a wine tasting at Khovrenko Winery in Samarkand. You will be taken on a tour of the wine museum, familiarising yourselves with the history of winemaking in the region. This winery also produces vodka and brandy.



Visit Registan Square, Samarkand's breathtaking centrepiece

ITINERARY

DAYS 1-2: FLY OVERNIGHT TO TASHKENT

Fly overnight to Tashkent. Depending on your time of arrival, enjoy the rest of your day at leisure.

DAY 3: DISCOVER TASHKENT

Today you will explore the capital city visiting the old town, Barak Khana Seminary, Tila Shaikh Mosque and Chorsu Bazaar. Enjoy a ceramic workshop ending with a delightful tea ceremony. Later visit Amir Temur square and the famous Tashkent Metro.

DAY 4: NUKUS & KHIVA

This morning you will fly to Nukus where the highlight is the Igor Savitsky Museum. In the afternoon you will continue to Khiva, visiting ancient fortresses en route. These include Chalpik Kala, also known as the Tower of Silence, Kizil Kala Fortress and Toprak Kala Fortress – an excavated town considered to be one of the most important monuments on Khorezm. You can also explore Ayaz Kala, one of the biggest complexes in Karakalpakstan, comprising three fortresses.

DAY 5: KHIVA

Set out on foot, taking in all the major sights of the Itchan Kala, Khiva's evocative and wonderfully preserved old city. Visit the citadel, Kalta Minor Minaret, Kunya Ark, Madrassah Rakhimkhon and the Mausoleum of Pakhlavan Makhmud. Keep exploring this afternoon, at the Friday Mosque and Tashauli Palace, including its harem.

DAY 6: KHIVA TO BUKHARA

Set out for Bukhara, taking a long drive across the famous Kyzyl Kum Desert. The Great Silk Road once ran a similar route to the one you

will travel today. There will be several photo opportunities along the way as well as a stop along the banks of the Amudarya River.

DAY 7: BUKHARA

Begin your full day of touring this incredible city, home to hundreds of registered monuments. The main highlights will include Lab-i-khauz, Madrassah Nadirkhon Devanbegi, Khanaga and Mogaki Attari Mosque. After lunch, visit Ark Fortress, Balakhauz Mosque and see the locals doing block printing, metal chasing and suzani embroidery as well as carving.

DAY 8: BY TRAIN TO SAMARKAND

Visit Sitara-i-Mokhikhosa, the summer residence of the emir of Bukhara,



Discover the mosques of Bukhara



Explore Ayaz Kala Fort



Marvel at the tilework of Itchan Kala, Khiva

and then visit Bahauddin Naqshbandi – the memorial complex of famous Sufi, the spiritual leaders of this region. In the afternoon you'll make your way to the train station for your journey to Samarkand.

DAY 9: SAMARKAND

Today you will explore one of the oldest continually inhabited cities in the world and the oldest in Central Asia. Visit the breathtakingly beautiful Registan Square which was the heart of Samarkand, and the beautiful madrassahs of Ulug-Bek built in the 15th century. Go on to visit Tillya-Kori, built in the 17th century and Gur Emir, the mausoleum of great conqueror Tamerlane. Later, enjoy a wander through the Silk Road bazaar.

DAY 10: SHAKHRISABZ

Travel two hours to Shakhrisabz, a small traditional city lying 80 kilometres south of Samarkand. Here, the birthplace of Tamerlane, you will explore Ak-Sarai Palace, Dorus Tilavat cemetery and Kok-Gumbas Mosque, before returning to Samarkand.

DAY 11: SAMARKAND TO TASHKENT

Exploring today begins with a visit to Ulugbek's observatory followed by a visit to the ancient settlement of Afrosiab situated in the hills. You will have some leisure time in Samarkand before transferring to the train station, heading back to Tashkent.

DAY 12: FLY TASHKENT TO UK

Fly to UK, arriving home the same day.



Admire traditional suzani embroidery

ULTIMATE UZBEKISTAN

CLASSIC UZBEKISTAN

PHYSICAL RATING



IS THIS TOUR FOR YOU?

Enjoy an in-depth exploration of the Central Asian nation of Uzbekistan, a heartland of ancient culture, timeless cities and associations with the myths and legends of the Silk Road. Explore among spectacular scenery, discovering architectural wonders and epic history.

PRICES & DEPARTURES

Departing Friday returning Tuesday

2026 DATES

17 Apr - 28 Apr	£3,890	11 Sep - 22 Sep	£3,890
15 May - 26 May	£3,890	09 Oct - 20 Oct	£3,890

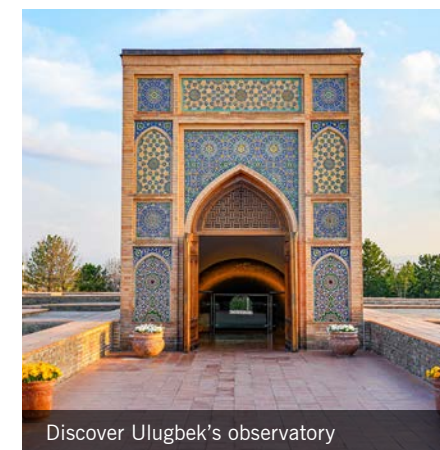
2027 DATES

16 Apr - 27 Apr	£3,890	10 Sep - 21 Sep	£3,890
14 May - 25 May	£3,890	08 Oct - 19 Oct	£3,890

Flight and supplement information

- Based on London Heathrow departures
- Regional UK departures available
- Flight upgrades available on request
- Land only from £3,290 (Tashkent - Tashkent)
- Single room from £430
- Tipping paid locally USD\$100

Call for our 2028 pricing and departures



Discover Ulugbek's observatory



Discover Southeast Asia with Wendy Wu Tours

Southeast Asia is a dream destination for many travellers – with captivating scenery, tranquil temples and sensational food, it’s easy to see why. Uncover countless cultures, beautiful landscapes and fascinating history in this most enchanting region.

WENDY’S TOP SOUTHEAST ASIA SIGHTS

1

HALONG BAY

Cruise on Halong Bay’s tranquil waters and soak up the beauty of its foliage-cloaked islands on our Vietnam & the Reunification Express tour (page 44).

2

REUNIFICATION EXPRESS

Experience Vietnam from a new perspective on the Reunification Express, as the train winds past emerald paddies, coastal cliffs and bustling towns (page 44).

3

SINGAPORE

Singapore dazzles with its fusion of cultures, futuristic skyline, and lush green spaces – a city unlike any other. Experience it on our Singapore to Bangkok by Rail tour (page 46).

4

MEKONG DELTA

Explore the lush Mekong Delta, meeting the locals and experiencing the culture, on our Vietnam & the Reunification Express tour (page 44).

5

HOI AN

Step back in time in Hoi An, where golden lights, ancient houses, and riverfront cafés create pure magic. Visit on our Vietnam & the Reunification Express tour (page 44).

6

CAMERON HIGHLANDS

Escape to the Cameron Highlands, where misty hills, vibrant gardens and emerald tea terraces create a serene retreat in the heart of Malaysia. Explore on our Singapore to Bangkok by Rail tour (page 46).

7

JAMES BOND ISLAND

Marvel at the striking seascapes of James Bond Island, where towering cliffs rise from turquoise waters in cinematic splendour, on our Singapore to Bangkok by Rail tour (page 46).

VIETNAM & THE REUNIFICATION EXPRESS

- 14 DAYS FROM
- PER PERSON £4,190
- FLIGHT INCLUSIVE FROM THE UK
- ALL MEALS

- TOUR TICKLIST
- ✓ Wake to a Halong Bay sunrise
 - ✓ Experience a journey on the iconic Reunification Express
 - ✓ Be inspired by charming Hoi An
 - ✓ Discover the Cu Chi Tunnels
 - ✓ Explore the waterways of the Mekong Delta



Ride Vietnam's Reunification Express

- PRICE INCLUDES
- 12 breakfasts, 11 lunches & 12 dinners
 - International flights and current taxes
 - Domestic transportation
 - 4 star accommodation and 1 overnight train
 - Touring with guides and entrance fees
 - Maximum group size of 18



Experience Vietnam's scenic rail journeys

► AUTHENTIC EXPERIENCES

- Experience Vietnam's historic Reunification Express as you embark on two rail journeys along the scenic north-to-south route, including an overnight trip in the comfort of a Lotus Express carriage.
- Gain a personal and authentic perspective on history as you meet a Vietnamese war veteran at the Cu Chi Tunnels. Their stories will offer a unique insight into the past.
- Enjoy a performance of Saigon's must-see culture extravaganza, the A O Show, at the city's landmark Opera House. This showcase of talented local circus performers, dancers, athletes, and artists makes for an incredible evening!

ITINERARY

- DAYS 1-2: FLY TO HANOI**
Fly overnight to Hanoi, Vietnam's vibrant capital. Depending on your time of arrival, the rest of the day is yours to start soaking up the local culture.
- DAY 3: HANOI BY CYCLO**
Begin your day at the Ethnology Museum, with its mesmerising displays exploring the country's 54 ethnic minority groups. In its grounds are a range of full-size replica longhouses demonstrating traditional ways of life in rural Vietnam. After lunch, cross the Red Bridge over Hoan Kiem Lake to visit Ngoc Son Temple before embarking on a cyclo tour of Hanoi's Old Quarter. Wrap up your day with a foodie tour through the city.
- DAY 4: EXPLORE HANOI**
Discover Hanoi on foot during today's walking tour. Begin in the Ho Chi Minh Quarter, where you will gain an insight into the Vietnamese War before visiting the Humble House on Stilts, the residence of Ho Chi Minh in the grounds of the Presidential Palace, and his mausoleum. After lunch, visit the One Pillar Pagoda and serene Temple of Literature, Hanoi's first university.
- DAY 5: CRUISE HALONG BAY**
Head to Halong Bay, where you will embark on an unforgettable two-night cruise through this beautiful seascape. Enjoy lunch onboard as you cruise out into the bay, followed by an afternoon of activities such as kayaking, swimming, or relaxing on an island beach. End the day on deck to watch the sunset, followed by a freshly prepared dinner, before retiring to your cabin for the night.

- DAY 6: VISIT FLOATING VILLAGES**
Rise early to enjoy a Tai Chi lesson on deck as the sun rises, and admire the changing seascapes as you continue deeper into the bay. Visit floating villages, hidden caves, and sandy beaches before another night on board.
- DAY 7: OVERNIGHT TRAIN**
Cruise back to port, pausing to explore one of Halong Bay's impressive caves along the way. After an early brunch on board, disembark and prepare to board your overnight train to Hue - your first journey on the legendary Reunification Express. Originally completed under French colonial rule in 1936, the line was renamed after trains connected north and south Vietnam once again in 1976. Travel in comfort aboard the Lotus Express carriages and take in the ever-changing landscapes as you depart the capital.
- DAY 8: EXPLORE HUE**
Disembark the Reunification Express as you arrive in Hue this morning. The epitome of Vietnam's dynastic past, Hue is a dignified and scholarly city. Visit the imposing Imperial Citadel and Forbidden Purple City. The magnificent centrepiece of the Royal Empire, the citadel was extensively damaged during the Vietnam War. Visit the UNESCO-listed Royal Tomb of Minh Mang, a complex of 40 monuments set amid serene gardens and tranquil pools. Continue to the old Thien Mu Pagoda before taking a cruise on the Perfume River.
- DAY 9: RIDE THE REUNIFICATION LINE**
Hop back on board the Reunification Express in Hue and take what is considered one of the world's most scenic rail journeys over



Explore the crumbling ruins of Hue's Purple Forbidden City

- a mountain pass and along the coast to Danang. Continue by road to charming Hoi An, a wonderfully laid-back and traditional city. This afternoon, venture into the countryside to Tra Que, a farming village known for supplying fresh herbs and vegetables to local businesses. Soak up the lush landscape as you stroll through vibrant vegetable gardens, watch local farmers at work, and try your hand at traditional cultivation techniques. Then, take part in a hands-on cooking demonstration and savour the flavours of authentic local specialties.
- DAY 10: EXPLORE HOI AN**
Head out on a walking tour of the Old Town, visiting the Chua Ong Chinese Pagoda, a 200-year-old merchant house, and the Japanese Covered Bridge. Stop by the Hoi An Folklore Museum for an insight into local life before enjoying the rest of the afternoon at leisure. You may wish to visit one of the many boutique shops or head to the local beach to relax.
- DAY 11: FLY TO SAIGON**
Transfer to Danang and fly to Saigon, Vietnam's bustling southern city. Enjoy an afternoon at leisure as you start to soak up the vibrant atmosphere before an exciting performance of the A O show this evening, showcasing the talented local circus performers, dancers, athletes, and artists.
- DAY 12: DISCOVER SAIGON**
Uncover the ingenious guerrilla tactics of the Viet Cong as you explore the legendary Cu Chi Tunnels. For a truly authentic insight into the war, meet a Vietnamese veteran and hear his story. This afternoon, explore the city's heady mix of local culture and colonial influences,

- admiring major landmarks like the Notre-Dame Cathedral and Central Post Office before spending time at the poignant War Remnants Museum.
- DAY 13: EXPLORE THE MEKONG DELTA**
Travel to My Tho for a memorable cruise along the Mekong River. Paddle through a maze of palm-lined canals and catch a glimpse of daily life in the vibrant Mekong Delta. Savour a lunch of traditional Mekong dishes before stopping at the peaceful Vinh Trang Pagoda on your return to Saigon.
- DAY 14: FLY SAIGON TO UK**
Transfer to the airport to fly back to the UK, arriving the same or following day.



See the floating villages of Halong Bay

CLASSIC VIETNAM

PHYSICAL RATING

IS THIS TOUR FOR YOU?
Explore the captivating landscapes of Vietnam by various modes of transport, including leisurely train rides along sections of the iconic Reunification Line—an unforgettable experience in its own right.



Stroll through Hoi An's old town

PRICES AND DEPARTURES			
Departing Monday returning Sunday			
2026 DATES			
12 Jan - 25 Jan	£4,190	05 Oct - 25 Oct	£4,190
02 Feb - 15 Feb	£4,190	19 Oct - 01 Nov	£4,190
23 Feb - 08 Mar	£4,190	02 Nov - 15 Nov	£4,190
09 Mar - 22 Mar	£4,190	16 Nov - 29 Nov	£4,190
2027 DATES			
04 Jan - 17 Jan	£4,390	05 Oct - 24 Oct	£4,390
11 Jan - 24 Jan	£4,390	19 Oct - 31 Oct	£4,390
01 Feb - 14 Feb	£4,390	02 Nov - 14 Nov	£4,390
22 Feb - 07 Mar	£4,390	16 Nov - 28 Nov	£4,390
09 Mar - 21 Mar	£4,390		
Flight and supplement information			
• Based on London Heathrow departures			
• Regional UK departures available			
• Flight upgrades available on request			
• Land only from £3,390 (Hanoi - Saigon)			
• Single room from £790			
• Tipping paid locally US\$75			

SINGAPORE TO BANGKOK BY RAIL

- 18 DAYS FROM
- PER PERSON £6,690
- FLIGHT INCLUSIVE FROM THE UK
- ALL MEALS

TOUR TICKLIST

- ✓ Explore Singapore's Sky Garden
- ✓ Visit the Cameron Highlands
- ✓ Experience Phuket's natural beauty
- ✓ Discover Bangkok's iconic sights
- ✓ Cross the bridge over the River Kwai

PRICE INCLUDES

- 16 breakfasts, 15 lunches & 16 dinners
- International flights and current taxes
- Domestic transportation
- 3 star plus – 4 star accommodation
- Touring with guides and entrance fees
- Maximum group size of 18



Feast on Thai and Malay street food

► AUTHENTIC EXPERIENCES

- Indulge in the vibrant flavours of Malaysia and Thailand with street food tours in both Kuala Lumpur and Phuket, sampling some of the most authentic and delicious local dishes each has to offer.
- Opened in 1923, the Penang Hill Funicular climbs two kilometres to the summit, passing through the world's steepest tunnel. At the top, enjoy tea and cake in a charming colonial house and explore unspoiled nature.
- Experience a poignant 40-minute journey on the Death Railway, clinging to jungle-clad cliffs and crossing the River Kwai via the infamous bridge. Learn about its sombre history at Kanchanaburi's Memorial Museum and Hellfire Pass.



See iconic James Bond Island

ITINERARY

DAYS 1-2: FLY OVERNIGHT TO SINGAPORE

Fly overnight to Singapore and transfer to your hotel. Depending on your time of arrival, the rest of the day is yours to start soaking up the local culture.

DAY 3: EXPLORE SINGAPORE

Start at the orchid gardens before taking a walking tour of the Civic District to admire stunning colonial landmarks. Then, explore the famous shopping street, Orchard Road, followed by a bumboat ride for a unique view of the city. Enjoy some free time before an evening visit to the beautifully illuminated SuperTree Grove at the Gardens by the Bay.

DAY 4: TRAVEL TO MALACCA

Cross the bridge from Singapore to Johor Bahru in Malaysia. Drive through the Malay countryside to the historic town of Malacca, arriving in the late afternoon. Later, cruise Malacca's old canals as the sun sets.

DAY 5: DISCOVER MALACCA

Immerse yourself in Malacca's multi-faceted heritage with a tour of its fascinating Old Town, where a blend of empires have left their mark. Stroll the Street of Harmony, where Hindu, Chinese and Muslim places of worship sit side by side, stopping at a local craft museum. This afternoon head to Tampin Station to hop on the train to Kuala Lumpur. Here, your explorations begin with a street food tour.

DAY 6: BATU CAVES

Take a 30-minute metro ride out of the city to visit the Batu Caves, one of Malaysia's most important Hindu temples. Return to Kuala Lumpur and visit the city's highlights,

including Masjid Jamek and the landmarks of the Old District – Sutan Abdul Samad Clock Tower, Independence Square, and the Central Market. Ascend to the KL Tower's Skydeck for views of the city skyline, dominated by the Petronas Twin Towers.

DAY 7: TRAVEL TO CAMERON HIGHLANDS

Enjoy a morning at leisure before boarding the train to Tapah Road. After lunch, take a scenic road trip into the Cameron Highlands, stopping at Lata Iskandar Waterfall. Pause at an indigenous Orang Asli roadside shop that sells forest honey and handicrafts, where the chief may extend an invitation to visit the village.

DAY 8: MOSSY FOREST WALK

Embark on a gentle uphill hike through the Mossy Forest, home to exotic plants like ferns and pitcher plants, and be rewarded with stunning panoramic views. Visit a tea plantation to learn about local tea production before driving to Ipoh. Then, board a train to Penang, passing scenic countryside and crossing Bukit Merah Lake before arriving in George Town.



Experience Singapore's Sky Garden



DAY 9: PENANG HILL

Spend the morning exploring the heritage-rich streets of George Town and pay a visit to the Penang Peranakan Mansion to see its fascinating antiques. After lunch, head to the foot of Penang Hill and board the historic funicular train to reach the top. Pause for a cup of tea and pastry at the century-old-bungalow-turned-restaurant then take on a canopy walkway through the protected rainforest before strolling the trails of the forest floor.

DAY 10: FLY TO PHUKET

Transfer to the airport for a lunchtime flight to Phuket. On arrival, enjoy time at leisure to relax or explore at your own pace.

DAY 11: JAMES BOND ISLAND

Hop on a speedboat and head out on an exploration of the spectacular Phang Nga Bay, home to some of Thailand's most gorgeous scenery. Stop at Panak Island and discover its mysterious caves by canoe then zip around Koh Tapu, also called 'James Bond Island', featured in 1974 film *The Man with the Golden Gun*.

DAY 12: ELEPHANT SANCTUARY

This morning, you'll support ethical tourism with a memorable visit to the Phuket Elephant Sanctuary. Observe elephants in their natural habitat of lush tropical jungle, feed them, and learn about their individual stories. Return to Phuket and embark on a street food tour, sampling the bold flavors of Southern Thailand. As dusk falls, soak up the atmosphere of a bustling night market.

DAY 13: VILLAGE LIFE

Drive to Bang Rong Community for an immersive cultural experience. Experience rural Thai life up

close with hands-on activities like pineapple harvesting, rubber tapping and coconut picking. After lunch, enjoy a relaxing kayak journey through peaceful mangrove waterways, and find out more about this vital eco-system before continuing to Surat Thani.

DAY 14: TRAIN TO HUA HIN

Take the train to Hua Hin, winding along the coast with excellent seaside views throughout the journey.

DAY 15: HUA HIN & TRAIN TO BANGKOK

Enjoy a relaxed morning at leisure in Hua Hin. Perhaps take a stroll along the beach, unwind at a local café, or browse the bustling markets at your own pace before boarding the train to Bangkok this afternoon.

DAY 16: DEATH RAILWAY

Take a day trip to Kanchanaburi and explore its historic role during WWII amidst a beautiful forest setting. Visit the railway museum, Allied War Cemetery, Hellfire Pass and ride the Death Railway, crossing the famous bridge on the River Kwai.

DAY 17: BANGKOK CITY TOUR

This morning, discover Bangkok's highlights on a city tour that features the Grand Palace, the Temple of the Emerald Buddha and Wat Pho. Stop by the amulet market to learn about these Buddhist charms. After lunch, enjoy time at leisure until your farewell dinner.

DAY 18: FLY BANGKOK TO UK

Transfer to the airport for your flight back to the UK, arriving home the same or following day.

SINGAPORE TO BANGKOK BY RAIL

CLASSIC SINGAPORE, MALAYSIA & THAILAND

PHYSICAL RATING



IS THIS TOUR FOR YOU?

Make your way by train from Singapore through Malaysia to Penang, flying over the border into Thailand to travel from Phuket to Bangkok, exploring spectacular landscapes, culture-filled cities, and plenty of local cuisine en route.



Ride the Death Railway over the River Kwai

PRICES AND DEPARTURES

Departing Friday returning Monday

2026 DATES

30 Jan - 16 Feb	£6,690	06 Nov - 23 Nov	£6,690
13 Mar - 30 Mar	£6,690	13 Nov - 30 Nov	£6,690
23 Oct - 09 Nov	£6,690	20 Nov - 07 Dec	£6,690
30 Oct - 16 Nov	£6,690		

2027 DATES

19 Feb - 08 Mar	£6,990	29 Oct - 15 Nov	£6,990
26 Feb - 15 Mar	£6,990	05 Nov - 22 Nov	£6,990
05 Mar - 22 Mar	£6,990	12 Nov - 29 Nov	£6,990
19 Mar - 05 Apr	£6,990	19 Nov - 06 Dec	£6,990
22 Oct - 08 Nov	£6,990		

Flight and supplement information

- Based on London Heathrow departures
- Regional UK departures available
- Flight upgrades available on request
- Land only from £6,090 (Singapore - Bangkok)
- Single room from £1,320
- Tipping paid locally US\$95 (2026), US\$115 (2027)



Discover India with Wendy Wu Tours

Explore India’s vibrant streets, grand palaces and iconic monuments. Wander through the sacred ghats and historic forts as you experience the rich culture, traditional cuisine and timeless customs that showcase this diverse country’s heritage.

WENDY'S TOP 9 INDIA SIGHTS

1

TAJ MAHAL

Discover the breathtaking beauty of the Taj Mahal, India's most iconic symbol of love. Rising elegantly on the banks of the Yamuna River, this white marble masterpiece tells a story of love and devotion.

2

SARNATH

Discover ancient stupas, monasteries and architectural ruins reflecting centuries of Buddhist history, as you wander past the sculptures and relics of this sacred site.

3

FATEHPUR SIKRI

Explore the history of this UNESCO World Heritage site, showcasing Mughal architecture through its palaces, vast courtyards and imposing gates.

4

QUTAB MINAR

One of Delhi's famous landmarks, this towering masterpiece showcases Islamic carvings and inscriptions. The surrounding complex features ancient mosques, tombs and gardens.

5

MAHARAJA'S PALACE

Step into the grandeur of the City Palace, Jaipur, built by Maharaja Sawai Jai Singh II. This royal complex blends Mughal and Rajput architecture with majestic courtyards, grand gateways, and ornate halls.

6

GOLDEN TEMPLE

Surrounded by the sacred Amrit Sarovar, this stunning temple welcomes visitors from all faiths. With gold-plated walls, intricate carvings and marble walkways, get a glimpse into India's Sikh heritage.

7

AMBER FORT

Perched on the hills of Jaipur, this beautiful fortress with its red sandstone and marble architecture, reflects the royal lifestyle of Rajasthan's rulers in the past.

8

SHIMLA TOY TRAIN

Travel through lush forests and rolling mountains, taking in spectacular scenery as you travel slowly aboard this famous Toy Train.

9

JAMA MASJID

Located in the heart of Old Delhi, India's largest mosque offers visitors soaring domes and towering minarets. Admire intricate calligraphy and marble inlays or explore its beautiful courtyards.

INDIA BY RAIL

15 DAYS FROM

PER PERSON £4,490

FLIGHT INCLUSIVE FROM THE UK

ALL MEALS

TOUR TICKLIST

- ✓ Ride the toy train in Shimla
- ✓ Watch the Wagah Border flag ceremony
- ✓ Marvel at the Taj Mahal
- ✓ Experience a Pooja ceremony
- ✓ Explore magnificent Amber Fort

PRICE INCLUDES

- 13 breakfasts, 12 lunches & 13 dinners
- International flights and current taxes
- Domestic transportation
- 4 star accommodation
- Touring with guides and entrance fees
- Visa fees for UK & EU passport holders



► AUTHENTIC EXPERIENCES

- Explore the Buddhist sites in Sarnath, where Gautama Buddha first taught the Dharma after attaining enlightenment. Visit the Ashoka Pillar, an iconic symbol of Sarnath's heritage.
- Embark on a charming toy train journey from Shimla to Shoghi, taking in the breathtaking views of the mountains and valleys of the Himalayan foothills as you trundle slowly through.
- Participate in block printing, a traditional form of textile printing that involves the use of hand-carved wooden blocks to create intricate patterns on fabric. This art form has a long history and is still practiced throughout India today.



Ride Shimla's toy train

ITINERARY

DAYS 1-2: FLY OVERNIGHT TO DELHI

Fly overnight to Delhi. Depending on your time of arrival, enjoy the rest of your day at leisure.

DAY 3: EXPLORE DELHI

Begin your day with a drive alongside the magnificent Red Fort, taking in the awe-inspiring beauty of its red sandstone structure. Next, embark on a delightful rickshaw ride through the lively streets of Old Delhi, before proceeding to the renowned Jama Masjid. After lunch, fly to Amritsar, eagerly anticipating the adventure that lies ahead.

DAY 4: DISCOVER AMRITSAR

Today starts with a morning visit to the historically significant Jallianwala Bagh, a poignant public garden in Amritsar. Continue to explore the spectacular Golden Temple, the most significant shrine in Sikhism. Later visit the remarkable Durgiana Temple, and in the afternoon, embark on a scenic drive to the Wagah border, to witness the ceremonial flag lowering ceremony.

DAY 5: TRAVEL TO SHIMLA

Catch your morning train and enjoy the picturesque journey as you head towards Chandigarh. Continue by road to the hill station of Shimla, where you will take a walking tour to Mall Road. Explore The Ridge, a spacious open space offering panoramic views of the surrounding hills, and marvel at the architectural beauty of Christ Church, a landmark of Shimla's colonial heritage.

DAY 6: SHIMLA

Today begins with an enchanting toy train experience from Shimla to Shoghi. Return to Shimla by road to enjoy some time in

the former hill station. Explore the colonial grandeur of the Indian Institute of Advanced Studies and learn about its historical significance. Continue your exploration by visiting the Himachal State Museum. Immerse yourself in the rich heritage and vibrant artistry of the region as you discover the museum's fascinating exhibits.

DAY 7: TRAVEL TO DELHI

After your memorable time in Shimla, it's time to transfer to Chandigarh station for your onward journey. Bid farewell to the charming hill station as you board your train bound for Delhi. Sit back, relax, and enjoy the changing landscapes. The afternoon is at leisure for you to explore.

DAY 8: TRAIN TO JAIPUR

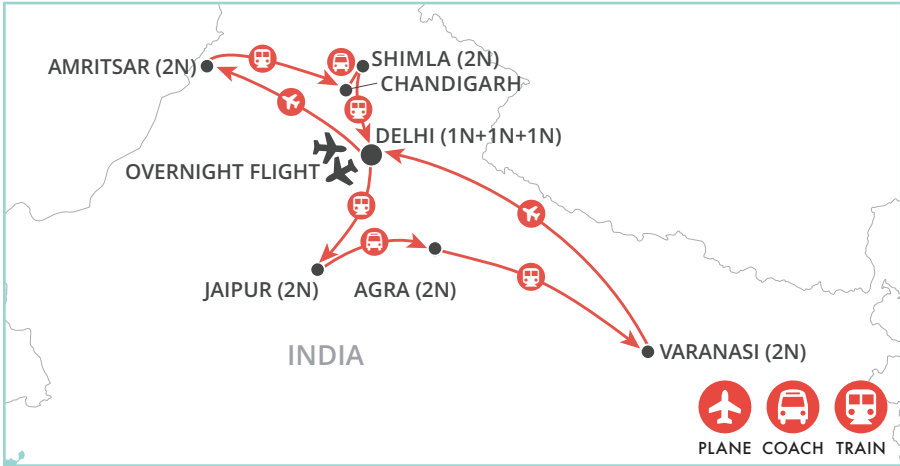
Have breakfast onboard the train while you journey to Jaipur. In the afternoon, visit two of the city's top attractions. Explore the majestic Maharaja's City Palace, which still serves as the residence of the city's royal family. Then, marvel at the fascinating Jantar Mantar Observatory, a collection of extraordinary instruments designed to measure celestial phenomena.

DAY 9: EXPLORE JAIPUR

After breakfast, take a quick photo stop at the Hawa Mahal (Palace of the Winds) from the outside. Next, enjoy a visit to the magnificent Amber Fort and immerse yourself in its regal ambiance. Later witness traditional crafts like block printing and carpet weaving at a local craft centre.

DAY 10: JAIPUR TO AGRA

After breakfast depart for Agra, a city steeped in history and architectural marvels.

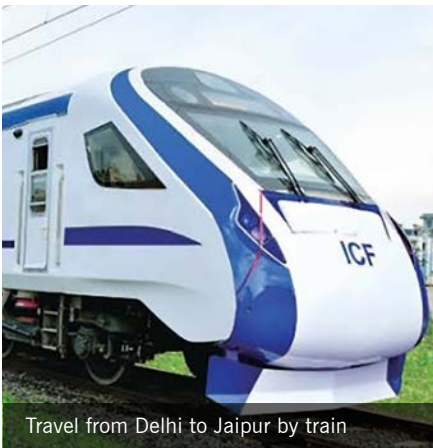


Marvel at the magnificent Taj Mahal

Stop en route at Fatehpur Sikri, a UNESCO World Heritage site showcasing the grandeur of Mughal architecture. Admire Buland Darwaza the spectacular gateway to the city's Jama Masjid, and explore regal palaces and courtyards. Continue to Agra for the night.

DAY 11: DISCOVER AGRA

Start the day with a visit to the world-renowned Taj Mahal. Witness this iconic white marble monument's ethereal beauty and experience the tranquil atmosphere as you learn about the captivating love story behind its creation. In the afternoon, explore the majestic Agra Fort, an imposing fortress, with red sandstone walls, concealing a wealth of Mughal history within its ramparts. Wander through the opulent palaces, admire the intricate design work, and stand where emperors once stood, gazing out at the breathtaking view of the Taj Mahal in the distance.



Travel from Delhi to Jaipur by train

DAY 12: TRAIN TO VARANASI

Board a morning train from Agra to the sacred city of Varanasi. Upon arrival, prepare for an enchanting evening rickshaw ride to the banks of the Ganges River. As dusk sets in, witness the mesmerising Ganga Aarti, a traditional prayer ceremony dedicated to the river, capturing the rhythmic chants, flickering oil lamps, and the divine atmosphere that surrounds you.

DAY 13: VARANASI

Enjoy a serene cruise along the Ganges River, soaking in the spiritual atmosphere. Explore landmarks like Bharat Mata Mandir and Durga Temple. Visit Banaras Hindu University and the revered Vishwanath Temple. Venture to Sarnath to explore ancient Buddhist sites, including the Dhamek Stupa and Mulagandha Kuti Vihar, and become immersed in the rich spirituality and cultural heritage of Varanasi and Sarnath.

DAY 14: RETURN TO DELHI

Fly to Delhi and embark on a final afternoon of sightseeing, visiting Qutab Minar complex before driving by the grand Rashtrapati Bhawan, the official residence of the President of India. Nearby, the Secretariat Buildings and Parliament House stand as monumental symbols of India's democratic governance. Next, pay your respects at the solemn India Gate, a war memorial honouring the sacrifices of Indian soldiers.

DAY 15: FLY DELHI TO UK

Fly to the UK, arriving home the same day.

INDIA BY RAIL

CLASSIC INDIA

PHYSICAL RATING



IS THIS TOUR FOR YOU?

Set off on an extraordinary rail adventure through northern India, passing from bustling metropolises to serene countryside, embracing the myriad scenic landscapes, cultures, and traditions that are unfolding through your window.

PRICES & DEPARTURES

Departing Thursday returning Thursday

2026 DATES

05 Feb - 19 Feb	£4,490	29 Oct - 12 Nov	£4,490
05 Mar - 19 Mar	£4,490	19 Nov - 03 Dec	£4,490
12 Mar - 26 Mar	£4,490	26 Nov - 10 Dec	£4,490

2027 DATES

04 Feb - 18 Feb	£4,490	30 Sep - 14 Oct	£4,490
11 Mar - 25 Mar	£4,490	28 Oct - 11 Nov	£4,490
01 Apr - 15 Apr	£4,490	18 Nov - 02 Dec	£4,490

Flight and supplement information

- Based on London Heathrow departures
- Regional UK departures available
- Flight upgrades available on request
- Land only from £3,890 (Delhi - Delhi)
- Single room from £970
- Tipping paid locally US\$130

Call for our 2028 pricing and departures



Experience a Pooja ceremony



SHORT STAYS & STOPOVERS

Make your trip of a lifetime even more memorable by extending your tour, or adding a stopover en route. A short stay will allow you to delve even deeper into a region, explore a whole other country, or even give you the chance to relax on a beautiful beach. A stopover on the other hand is an easy way to not only break up your journey, but a great way to add a few days in a buzzing, cosmopolitan metropolis to your travel itinerary.

Most of the short stays and stopovers that you'll find in the following pages are available to be added onto any of our tours. Just ask your reservations consultant for more information on how to do just that.

54	Hong Kong Stopovers
56	Dubai Stopovers
58	Beijing Stopover
	Taipei Short Stay
59	Seoul Short Stay
	Singapore Stopover
60	Bangkok Stopover
	Hua Hin Short Stay
61	Phuket Beach Short Stay
	Goa Beach Short Stay

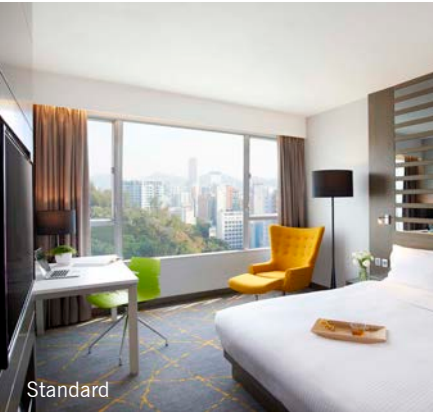


HONG KONG STOPOVERS

Hong Kong boasts award-winning gastronomy, a colourful nightlife and unbeatable city views from panoramic Victoria Peak or from the deck of a sampan on the harbour. A sophisticated and lively metropolis, Hong Kong's mix of colonial influences, futuristic modernity and distinct Chinese traditions make it the ultimate East-meets-West destination.

Explore Hong Kong

KOWLOON HOTELS



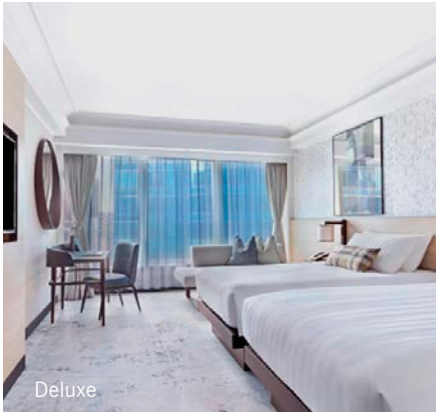
Standard

THE CITYVIEW ★★★★★
Located in the heart of Yau Ma Tei, The Cityview sits adjacent to bustling Nathan Road. It has a cosy Cantonese restaurant, a casual cafe and an airy Thai eatery. Offering world-class green eco standards and attentive service, The Cityview will make you feel right at home.



Superior

DORSETT, WAN CHAI ★★★★★
Perfectly located next to the Happy Valley Racecourse, the Dorsett offers bright and airy rooms decorated in a series of elegant themes. Just 10 minutes stroll from Causeway Bay MTR station, a free shuttle serves the most popular spots close by.



Deluxe

HARBOUR GRAND KOWLOON ★★★★★
Harbour Grand Kowloon is conveniently located on the Kowloon waterfront, offering unrivalled views of Victoria Harbour. Facilities include five restaurants, a lounge, a spa, and a seasonal outdoor rooftop swimming pool.

HONG KONG ISLAND HOTELS

HONG KONG GLIMPSES

3 DAYS

This fleeting visit to Hong Kong features all of the highlights of this vibrant city, including panoramic views from Victoria Peak and a ride on the longest outdoor covered escalator. Take some time to relax and explore the city's foodie scene.

DAY 1: ARRIVE HONG KONG

Arrive in Hong Kong and transfer from the airport to your hotel. Depending on your time of arrival, the rest of the day is at leisure.

DAY 2: CITY TOUR

Join an exciting half-day seat-in-coach tour of Hong Kong! Begin with a ride on the state-of-the-art 6th-generation Peak Tram to Victoria Peak, soaking in breathtaking views. Stroll through vibrant 'Old Town

Central' via the world's longest outdoor escalator, then explore Tai Kwun, a cultural and artistic landmark nestled within historic walls. Visit the century-old Man Mo Temple before concluding your adventure with a dim sum feast at the world-renowned Tim Ho Wan. (B)

DAY 3: DEPART HONG KONG

After breakfast you will be transferred to the airport for your onward flight. (B)



Admire the view from Victoria Peak

Prices are from per person, based on low season		
HOTEL	TWIN SHARE	SOLO TRAVELLER
Standard	£390	£650
Superior	£410	£730
Deluxe	£540	£910

Price includes

- Accommodation (2 nights Hong Kong)
- Meals as stated (B,L,D)
- Transportation as stated
- Shared touring with guides and entrance fees

Note: This stopover is usually available with no additional flight costs if travelling with Cathay Pacific.

HONG KONG IN FOCUS

4 DAYS

Designed to help you explore two aspects of Hong Kong life, on this tour you'll not only see the sights of the city but discover the natural beauty of Lantau Island, home of the Grand Buddha.

DAY 1: ARRIVE HONG KONG

Arrive in Hong Kong and transfer from the airport to your hotel. Depending on your time of arrival, the rest of the day is at leisure.

DAY 2: CITY TOUR

Join an exciting half-day seat-in-coach tour of Hong Kong! Begin with a ride on the state-of-the-art 6th-generation Peak Tram to Victoria Peak, soaking in breathtaking views. Stroll through vibrant 'Old Town Central' via the world's longest outdoor escalator, then explore Tai Kwun, a cultural and artistic landmark nestled within historic walls. Visit the century-old Man Mo Temple before concluding your adventure with a dim

sum feast at the world-renowned Tim Ho Wan. (B)

DAY 3: LANTAU ISLAND

Discover the charms of Lantau Island, beginning your journey with visits to the renowned Wong Tai Sin Temple and Tin Hau Temple. Next, take a spectacular cable car ride to the Ngong Ping Plateau, home to the majestic Grand Buddha and Po Lin Monastery. Explore the Giant Buddha Exhibition Hall and monastery before enjoying a delightful vegetarian lunch. Conclude your adventure with a scenic cable car ride back to the city. (B,L)

DAY 4: DEPART HONG KONG

After breakfast you will be transferred to the airport for your onward flight. (B)



See the Grand Buddha at Lantau Island

Prices are from per person, based on low season		
HOTEL	TWIN SHARE	SOLO TRAVELLER
Standard	£740	£1,170
Superior	£760	£1,290
Deluxe	£950	£1,560

Price includes

- Accommodation (3 nights Hong Kong)
- Meals as stated (B,L,D)
- Transportation as stated
- Touring with guides and entrance fees

Note: This stopover is usually available with no additional flight costs if travelling with Cathay Pacific.

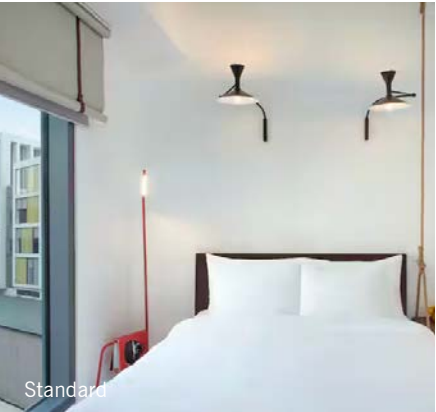


DUBAI STOPOVERS

Dubai is the ultimate urban destination – a city full of cutting-edge architecture, epic shopping malls, the finest of the world’s luxury hotels and a cosmopolitan nightlife, all topped off with excellent beaches. As modern and extravagant as Dubai might be, there is still plenty of rich and traditional culture to be found, particularly amongst the labyrinthine alleys of the old city.

Admire the ultra-modern architecture of downtown Dubai

DUBAI HOTELS



Standard

HAMPTON BY HILTON AL SEEF ★★ ★
This hotel sits along Dubai Creek in the heart of old Dubai. It is surrounded by restaurants and shops, making it the perfect base for exploring the city’s historic and cultural sites, with the Museum of Illusions nearby.



Superior

CANOPY BY HILTON DUBAI AL SEEF ★★ ★ ★
Canopy by Hilton Dubai Al Seef is a contemporary new hotel located beside Dubai Creek, steps away from the boardwalk, which means you are spoilt for choice of shops and restaurants. The view from the rooftop pool is simply superb.



Deluxe

VOCO HOTEL DUBAI ★★ ★ ★ ★
Located minutes away from top attractions. The hotel sits a short drive from Mall of the Emirates and offers quick access to Dubai Marina, Palm Jumeirah, and the Al Barsha Metro Station.

ESSENTIAL DUBAI

3 DAYS

See a whole other side of Dubai on a stopover that includes a half day city tour that provides an insight into Dubai’s rich history. Admire the incredible architecture – ultra-modern and deeply traditional, and browse through the wares of Dubai’s old souks, as atmospheric today as they have been for centuries.

DAY 1: ARRIVE DUBAI

Upon arrival in Dubai, you will be met by your driver and transferred to your hotel. Depending on your time of arrival, the rest of the day is at leisure.

DAY 2: EXPLORE DUBAI

Enjoy a half day shared tour of the city, which provides an insight into Dubai’s rich history. Begin in Bastakiya’s historic heart, home to the 225-year-old Fort Al Fahidi. Next, take a step back in time and cross Dubai Creek

by traditional abra (water taxi) to Deira. Wander through the vibrant spice and gold souks – where the wares have been the same for centuries – and haggle for a bargain or two! Drive by the iconic Burj Al Arab before a photo stop at Jumeirah Mosque, an architectural landmark. The rest of the day is at leisure. (B)

DAY 3: DEPART DUBAI

Enjoy time at leisure before transferring to Dubai airport for your onward flight. (B)



Cross Dubai Creek by traditional abra

Prices are from per person, based on low season		
HOTEL	TWIN SHARE	SOLO TRAVELLER
Standard	£220	£380
Superior	£250	£430
Deluxe	£290	£530

Price includes

- Accommodation (2 nights Dubai)
 - Meals as stated (B,L,D)
 - Transportation as stated
 - Shared touring with guides and entrance fees
- Note: This stopover is usually available with no additional flight costs if travelling with Emirates.

DUBAI & THE DESERT

4 DAYS

See a whole other side of Dubai on a stopover that includes a half day city tour that provides insight into Dubai’s rich history. Also included is a desert safari where you spend the evening enjoying the entertainment as you feast on Arabic cuisine under the stars at a traditional Bedouin-style camp.

DAY 1: ARRIVE DUBAI

Upon arrival in Dubai, you will be met by your driver and transferred to your hotel. Depending on your time of arrival, the rest of the day is at leisure.

DAY 2: EXPLORE DUBAI

Enjoy a half day tour that begins in Bastakiya’s historic heart, home to the 225-year-old Fort Al Fahidi. Take a step back in time and cross Dubai Creek by traditional abra to Deira. Wander through the vibrant spice and gold souks before driving by the iconic Burj Al Arab and enjoy a photo stop at Jumeirah Mosque, an architectural landmark. The rest of the day is at leisure. (B)

DAY 3: DESERT ADVENTURE

The day is at leisure before you head out into the desert for a magical evening. View falcons at an amphitheatre before an exciting drive into the sand dunes, with a stop at the perfect spot for sunset. Stop at a Bedouin-style camp for a delicious Arabic-style buffet with unlimited drinks of selected beverages. Here, you can also try camel riding or have a traditional henna design drawn on your hand. (B,D)

DAY 4: DEPART DUBAI

Enjoy time at leisure before transferring to Dubai airport for your onward flight. (B)



Head deep into the spectacular desert for a magical experience

Prices are from per person, based on low season		
HOTEL	TWIN SHARE	SOLO TRAVELLER
Standard	£330	£540
Superior	£370	£620
Deluxe	£450	£770

Price includes

- Accommodation (3 nights Dubai)
 - Meals as stated (B,L,D)
 - Transportation as stated
 - Shared touring with guides and entrance fees
- Note: This stopover is usually available with no additional flight costs if travelling with Emirates.

BEIJING

STOPOVER

3

DAYS

TOUR TICKLIST

✓

Walk on the Great Wall

✓

Explore the Forbidden City

✓

Learn about jade

✓

Visit the iconic Tiananmen Square



Admire magnificent views whilst walking along the Great Wall

Prices are from per person, based on low season

CATEGORY	TWIN SHARE	SOLO TRAVELLER
Standard	£430	£770
Superior	£440	£780
Deluxe	£590	£960

Price includes:

•

Accommodation (2 nights Beijing)

•

Meals as stated (B,L,D)

•

Transportation as stated

•

Private touring with guides and entrance fees

Additional transfer supplement for Beijing Daxing Airport: from £25 per person, per way (based on two people).

DAY 1: ARRIVE BEIJING

Make your way to Beijing Capital Airport or Beijing railway station. Upon arrival, you will be met by your local guide and transferred to your hotel. The rest of the day is at leisure.

DAY 2: DISCOVER BEIJING

Rise early this morning and drive around one hour from the city to the Juyongguan Pass. Here you can take a walk on the Great Wall of China, appreciating the wall itself and the dramatic scenery. Stop at a jade factory to learn about this precious stone, then continue to the symbolic heart of Beijing. Stroll across Tiananmen Square, one of the largest public squares in the world, into the sprawling magnificence of the Forbidden City covering an area of 180 acres. (B,L)

DAY 3: DEPART BEIJING

Your day is at leisure until the time comes to transfer to Beijing Capital Airport or Beijing railway station for your onward journey. (B)

TAIPEI

SHORT STAY

4

DAYS

TOUR TICKLIST

✓

Discover bustling Taipei

✓

Ascend Taipei 101

✓

Explore the National Palace Museum

✓

See Longshan Temple



Explore vibrant Taipei

Prices are from per person, based on low season

CATEGORY	TWIN SHARE	SOLO TRAVELLER
Standard	£480	£920
Superior	£520	£990
Deluxe	£600	£1,180

Price includes:

•

Accommodation (3 nights Taipei)

•

Meals as stated (B,L,D)

•

Transportation as stated

•

Private touring with guides and entrance fees

Note: This extension is usually available with no additional flight costs if travelling with China Airlines.

DAY 1: ARRIVE TAIPEI

Make your way to Taipei, Taiwan's capital. Upon arrival, you will be met by your driver and transferred to your hotel. Taipei is a laidback and vibrant city that, as well as being packed with the upmarket and ultramodern, is a bastion of Taiwan's wonderfully rich heritage. Its beauty lies in its blend of Chinese culture with a curious fusion of Japanese and Southeast Asian influences.

DAY 2: TAIPEI

Your guide will meet you at your hotel in Tapei to commence your tour. Start with a visit to the Chiang Kai-shek Memorial Hall, a monument dedicated to the former leader. Next, ascend to the observation deck at Taipei 101 for a birds-eye view over this sprawling city. Later, explore Longshan Temple and then Dihua Street known for

its many Chinese medicine shops. Finish the day at the National Palace Museum to admire the Chinese imperial collections and Martyr's Shrine before returning to your hotel. (B)

DAY 3: TAIPEI

Enjoy the day at leisure to explore the many sights and sounds of Taipei. (B)

DAY 4: DEPART TAIPEI

Your day is at leisure until the time comes to transfer to the airport for your onward flight. (B)

SEOUL

SHORT STAY

4

DAYS

TOUR TICKLIST

✓

See Gyeongbok Palace

✓

Wander through Jogyesa Temple

✓

Visit the iconic N Seoul Tower

✓

Stroll through Hanok Village



Enjoy panoramic views over Seoul

Prices are from per person, based on low season

CATEGORY	TWIN SHARE	SOLO TRAVELLER
Standard	£690	£1,010
Superior	£830	£1,210
Deluxe	£1,240	£1,800

Price includes:

•

Accommodation (3 nights Seoul)

•

Meals as stated (B,L,D)

•

Transportation as stated

•

Seat-in-coach touring with guides and entrance fees

Note: This extension is usually available with no additional flight costs if travelling with Asiana Airlines.

DAY 1: ARRIVE SEOUL

Travel to Seoul, South Korea's energetic capital. This dynamic city may be well and truly on fast-forward, but it is still deeply rooted in tradition. On arrival, meet your driver and transfer to your hotel. The rest of day is at leisure. Foodies, take note: the street snacks here are second to none!

DAY 2: SEOUL

Head to the pick-up point to begin your full-day seat-in-coach city tour. Pass by the Blue House, former residence of the Korean president. Continue to Gyeongbok Palace to witness the Royal Guard Changing Ceremony before exploring the Palace itself (closed on Tuesdays). Stop by a Zen temple before lunch.

Later, stroll along traditional Insadong Street, browse Gwangjang Market and visit Namsan Tower for panoramic views over the city. Your final stop is Hanok Village with its traditional houses and unique way of life. (B,L)

DAY 3: SEOUL

Enjoy the day at leisure to explore the many sights and sounds of Seoul. (B)

DAY 4: DEPART SEOUL

Your day is at leisure until the time comes to transfer to the airport for your onward flight. (B)

SINGAPORE

STOPOVER

3

DAYS

TOUR TICKLIST

✓

Explore Chinatown

✓

Enjoy hawker street food

✓

Wander Gardens by the Bay

✓

Admire Marina Bay Sands



Stroll through fascinating Singapore

Prices are from per person, based on low season

CATEGORY	TWIN SHARE	SOLO TRAVELLER
Standard	£340	£600
Superior	£380	£690
Deluxe	£450	£840

Price includes:

•

Accommodation (2 nights Singapore)

•

Meals as stated

•

Touring as stated (shared basis)

•

Entrance fees

•

Airport transfers (shared basis)

Note: This stopover is usually available with no additional flight costs if travelling with Singapore Airlines.

DAY 1: ARRIVE SINGAPORE

Arrive in Singapore and transfer from the airport to your hotel. A vibrant and cosmopolitan city, the rest of the day is free for you to relax or begin your explorations.

DAY 2: SINGAPORE CITY TOUR

Begin your journey at Kampong Glam, an area where modernity meets tradition. Explore the city by driving round the Civic District. Next, stop at the Merlion Park and enjoy the impressive views of Marina Bay. Do not miss out this picture-taking opportunity with The Merlion, a mythological creature that is part lion and part fish. Visit Thian Hock Keng Temple, one of Singapore's oldest Buddhist-Taoist temples, before driving past Chinatown. Proceed to Singapore's first UNESCO World Heritage Site – the Singapore Botanic Gardens and walk

through the National Orchid Garden which boasts a sprawling display of 60,000 orchid plants. (B)

DAY 3: DEPART SINGAPORE

Enjoy a leisurely breakfast before checking out of the hotel and transferring to Singapore airport. (B)

BANGKOK STOPOVER

4 DAYS

Thailand's capital is an atmospheric, energetic metropolis full of character. Join a fascinating city tour where you'll discover some of Bangkok's rich heritage before visiting the infamous Bridge over the River Kwai and riding on the Death Railway.

Prices are from per person, based on low season		
HOTEL	TWIN SHARE	SOLO TRAVELLER
Superior	£650	£1,190
Deluxe	£930	£1,750

- Price includes
- Accommodation (3 nights Bangkok)
 - Meals as stated (B,L,D)
 - Transportation as stated
 - Private touring with guides and entrance fees

Note: This stopover is usually available with no additional flight costs if travelling with Thai Airways.



Ride the Death Railway

DAY 1: ARRIVE IN BANGKOK

Arrive in Bangkok and transfer from the airport to your hotel. You'll feel the energy of this rambunctious city straight away, so why not use the rest of the day to begin your explorations?

DAY 2: BANGKOK CITY TOUR

Embark on a city tour of Bangkok. Visit the glittering Wat Pho temple and the spectacular Grand Palace before jumping into a long tail boat for a ride on the Chao Phraya River to Pak Klong Talaat Flower Market before dinner. (B,D)

DAY 3: RIVER KWAI & HELLFIRE PASS

Head three hours out of Bangkok to Kanchanaburi Province, which is home to the infamous Bridge over the River Kwai and the 'Death Railway'. See the Allied War Cemetery and walk through Hellfire Pass and the Memorial Museum. Return to Bangkok. (B,L)

DAY 4: DEPART BANGKOK

Enjoy a leisurely breakfast before checking out of the hotel. The rest of the day is free to spend as you wish before transferring to Bangkok airport. (B)

PHUKET BEACH SHORT STAY

4 DAYS

Thailand's beaches are the stuff of legend and Phuket is its most popular resort. Lapped by the warm waters of the Andaman Sea, Phuket, the largest of Thailand's many paradise islands, offers endless miles of immaculate sands.

Prices are from per person, based on low season		
HOTEL	TWIN SHARE	SOLO TRAVELLER
Standard	£230	£420
Superior	£390	£730
Deluxe	£690	£1,350

- Price includes
- Accommodation (3 nights Phuket)
 - Meals as stated (B,L,D)
 - Transportation as stated

Excludes flights to Phuket.



Stroll along the beautiful Karon Beach, Phuket

DAY 1: ARRIVE PHUKET

Arrive in Phuket and transfer to your hotel. The rest of the day is at leisure to start exploring all that Phuket has to offer.

DAY 4: DEPART PHUKET

Enjoy time at leisure before transferring to Phuket airport. (B)

DAYS 2-3: FREE TIME IN PHUKET

Spend the rest of your trip enjoying some quality downtime on this paradise island. When you've finished soaking up the sunshine, the island offers many activities such as white water rafting, rock climbing and plenty of water sports. Or you could stay in town and explore the local markets. (B)

HUA HIN BEACH SHORT STAY

4 DAYS

Hua Hin is the perfect destination for those wanting some beach time without having to travel too far from Bangkok. An intriguing intermingling of seaside, city, colourful buildings and markets, it's the perfect place to wind down.

Prices are from per person, based on low season		
HOTEL	TWIN SHARE	SOLO TRAVELLER
Superior	£500	£990
Deluxe	£540	£1,040

- Price includes
- Accommodation (3 nights Hua Hin)
 - Meals as stated (B,L,D)
 - Transportation as stated

Note: This stopover is usually available with no additional flight costs if travelling with Thai Airways.



Relax on vibrant Hua Hin Beach

DAY 1: ARRIVE HUA HIN

Upon arrival in Bangkok, you will be met by your tour guide and driver and transferred to your hotel in Hua Hin. Depending on your time of arrival, the rest of the day is at leisure.

DAYS 2-3: FREE TIME IN HUA HIN

Spend two days all out relaxing, perhaps with a visit or two to some local markets. There are plenty of places to taste the varied and delicious flavours of Thai street food, which is a must do! (B)

DAY 4: DEPART HUA HIN

Enjoy time at leisure before transferring to Bangkok airport for your onward flight. (B)

GOA BEACH SHORT STAY

5 DAYS

A little slice of paradise on the Arabian Sea, Goa has gorgeous beaches and a rich Portuguese heritage. Discover it all on this five-day short stay, the perfect way to round off your India adventure.

Prices are from per person, based on low season		
HOTEL	TWIN SHARE	SOLO TRAVELLER
Standard	£670	£1,290
Superior	£730	£1,360
Deluxe	£1,060	£2,090

- Price includes
- Accommodation (4 nights Goa)
 - Meals as stated (B,L,D)
 - Transportation as stated
 - Private touring with guides and entrance fees

Excludes flights to Goa.



Enjoy the gorgeous Goa Beach Resort

DAY 1: ARRIVE GOA

On arrival in Goa you will be met and transferred to your hotel. The rest of the day is at leisure.

DAY 2: GOA

After breakfast, depart for Goa's distinctive Hindu temples, including Shantadurga Temple and Ramnathi Temple. Continue to a spice plantation, where you'll be welcomed with traditional Aarti and a drink, followed by a Goan buffet lunch. Explore the plantation with a guide and learn about medicinal herbs and spices from an Ayurvedic expert. Next, visit Old Goa to see the Basilica of Bom Jesus and Se

Cathedral, before heading to Panaji to tour the capital and shop in its Portuguese-influenced quarters before returning to the hotel. (B,L)

DAYS 3-4: GOA AT LEISURE

Spend the next two days at leisure, either relaxing on the beach, participating in the resort activities or sightseeing further, the choice is yours. (B)

DAY 5: DEPART GOA

After breakfast you will be transferred to the airport for your onward flight. (B)

TAILORMADE & SPECIAL GROUPS

The very best of touring by rail, exactly the way you want it

WHAT IS A TAILORMADE HOLIDAY?

Quite simply, a tailor-made holiday is a journey designed and created especially for you. There's no one-size-fits-all when it comes to travel so tailor-made holidays are the perfect opportunity for travellers looking to embark on that once-in-a-lifetime adventure or epic honeymoon, for people who want to indulge their special interest, or for those who simply want to do things their own way.

WHY TRAVEL TAILORMADE?

You're completely in control of the what, where and when. You can choose the pace, where to linger longer, where to pass through and where to bypass completely. The hotels (from comfortable to all out luxury), what and where you eat, the number of nights, when you depart, the sort of experiences that you'll have, is all up to you too!

Whether you have a fully formed itinerary in mind, or just a vague inkling of what you want to see and do, one of our Personal Travel Specialists will be able to craft you something marvellous – with as much, or as little, input from you as you wish.

TAILORMADE TOURING FOR LARGER GROUPS

If you're organising a tour for 10 or more passengers, allow us to lighten the load. At Wendy Wu Tours, we can plan a range of exciting itineraries to suit your group's every want and need.

Led by Glen Thomas, an award-winning group organiser with 30 years of travel experience, including 10 years as a specialist in group tours, our team brings a wealth of knowledge to the table. We'll create something truly special and ensure the entire process runs seamlessly from start to finish.

How does it work?

It's really so simple – just follow the steps below:

"We are writing to say a very big thank you for giving us a wonderful tailor-made holiday. We were so impressed by how well organised the whole trip was, with reps on hand to meet us at each new destination, local guides for every city who were very informative, and a brilliant driver who looked after us so well during the entire tour."

Kevin & Shirley Mears



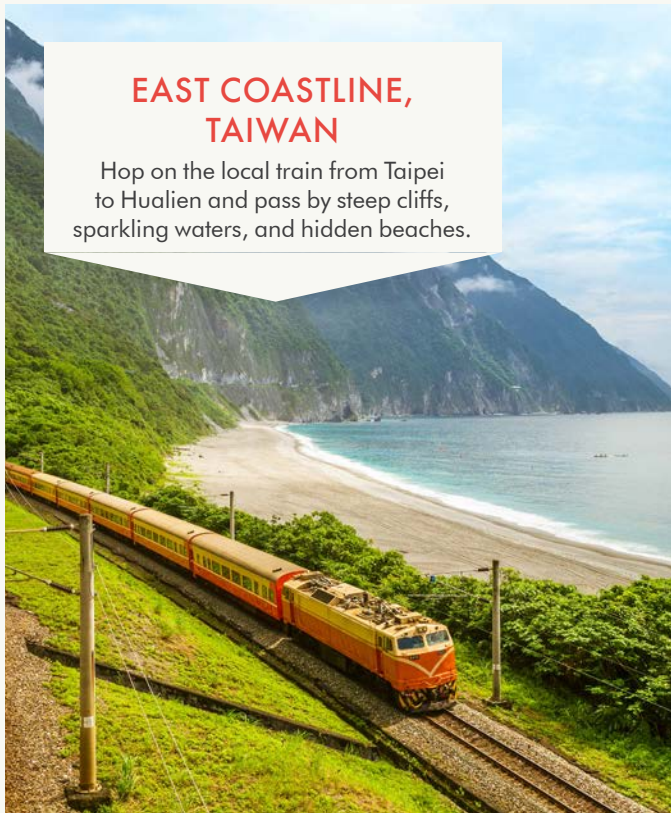
A Taste of the Train

With our Tailormade tours, you can design your own holiday and include any iconic rail journey, allowing you to experience the magic of travelling by train at your own pace. Here's a snapshot of some of our favourite unforgettable train experiences.



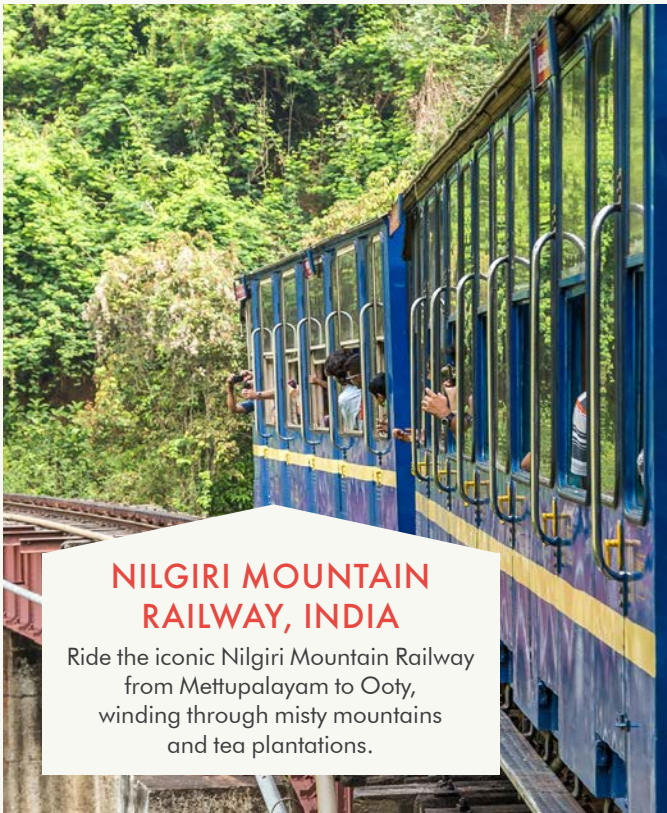
VISTADOME, PERU

Ride the rails to Machu Picchu and then through amazing Andean landscapes to the shores of Lake Titicaca.



EAST COASTLINE, TAIWAN

Hop on the local train from Taipei to Hualien and pass by steep cliffs, sparkling waters, and hidden beaches.



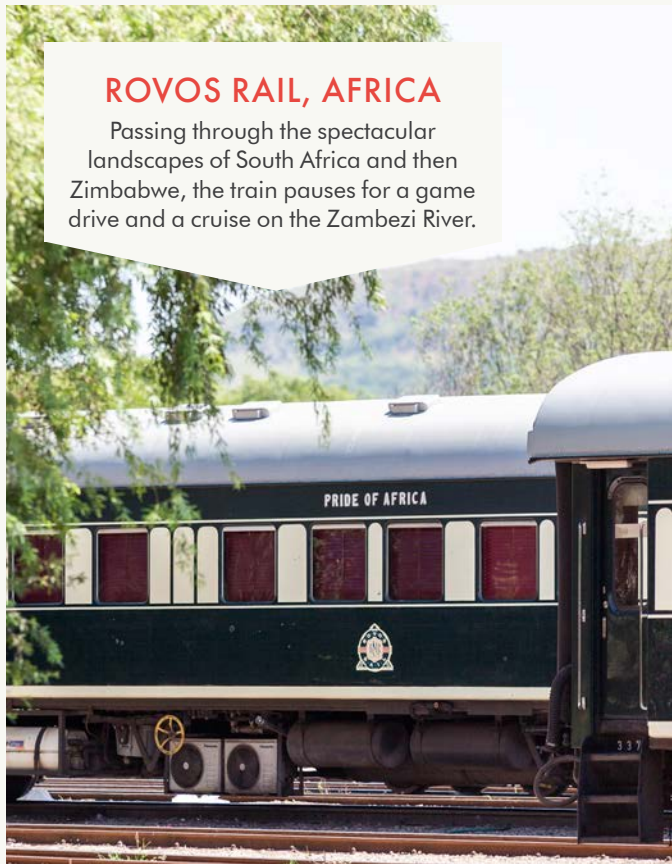
NILGIRI MOUNTAIN RAILWAY, INDIA

Ride the iconic Nilgiri Mountain Railway from Mettupalayam to Ooty, winding through misty mountains and tea plantations.



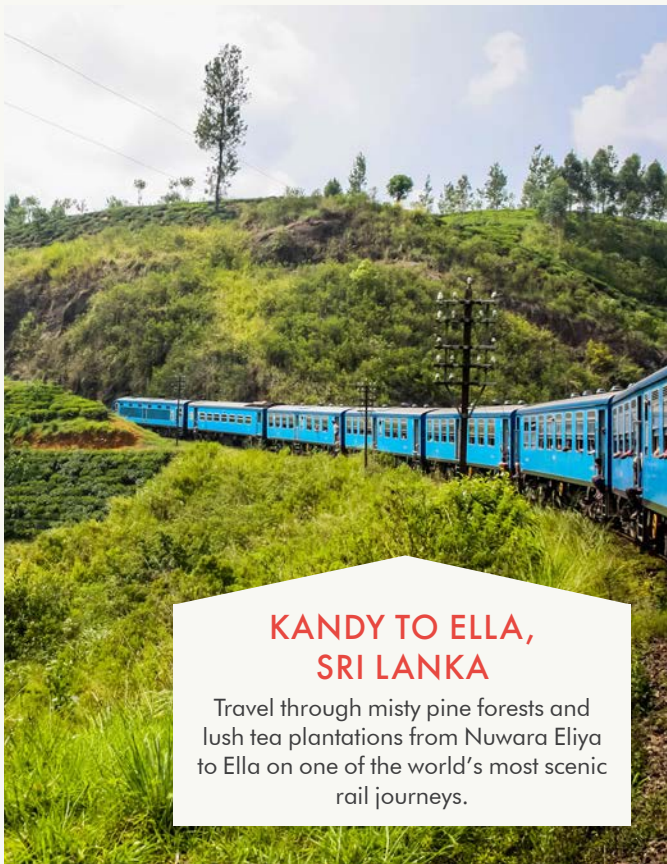
TRANS-MONGOLIAN RAILWAY, CHINA & MONGOLIA

Ride the Trans-Mongolian Railway from Beijing to Ulaanbaatar through vast open steppe, rolling hills, and sparse desert.



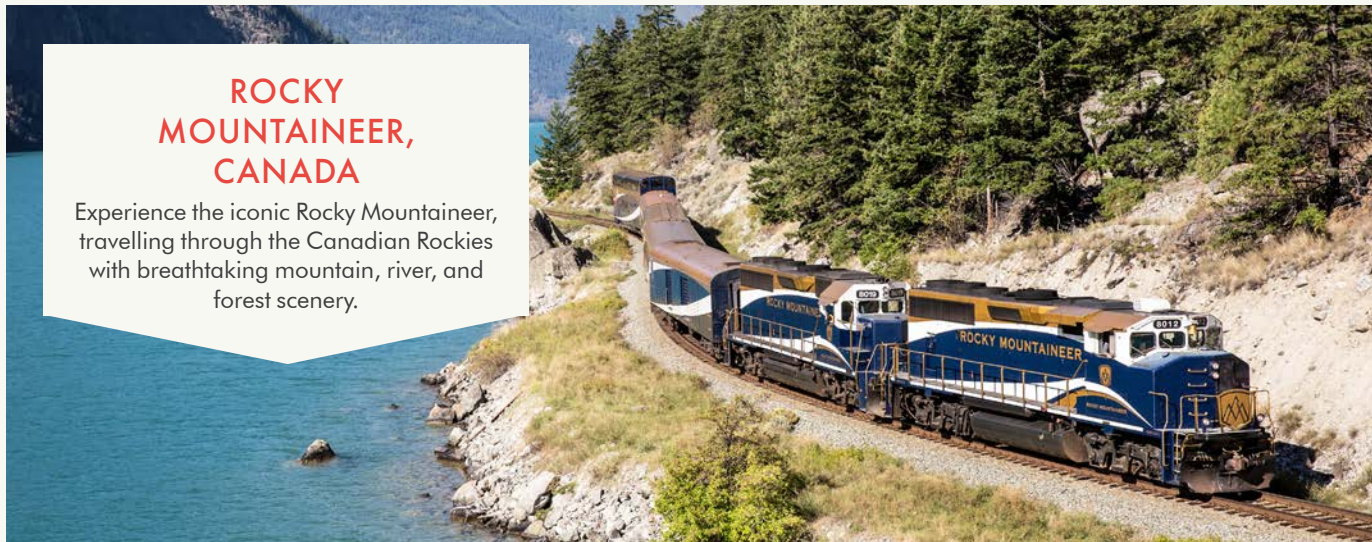
ROVOS RAIL, AFRICA

Passing through the spectacular landscapes of South Africa and then Zimbabwe, the train pauses for a game drive and a cruise on the Zambezi River.



KANDY TO ELLA, SRI LANKA

Travel through misty pine forests and lush tea plantations from Nuwara Eliya to Ella on one of the world's most scenic rail journeys.



ROCKY MOUNTAINEER, CANADA

Experience the iconic Rocky Mountaineer, travelling through the Canadian Rockies with breathtaking mountain, river, and forest scenery.

Hotels

Our group tours feature hand-picked four-star properties selected for their comfort, modern amenities and convenient location for sightseeing. We occasionally include a stay in three-star plus hotels or lodges where we feel the character of the property will enhance your tour, or to allow access to a more unique and memorable location.

Here is a taster of the type of hotels you will be staying in on your tour.

SAMPLE TOUR HOTELS



Please note that there is no universal hotel classification system, and standards of facilities and service may differ from those in the UK. A sample list of hotels is available on each tour page of our website, and full accommodation details will be provided in your final travel documents.

Flying in style

At Wendy Wu Tours, we pride ourselves on the strong relationships we have with our airline partners. We can offer you not only the most convenient flights to complement your tour, but the best value too. We believe that your flights are an essential part of your holiday experience, and so our carefully selected airlines offer the utmost comfort, allowing you to arrive relaxed, refreshed and raring to go! All of our tour prices include return international economy class flights, but if you're celebrating or just fancy treating yourself, upgrading your cabin class is a great option.

Preferred airline partners



CATHAY PACIFIC

Cathay Pacific offers five daily flights from London and four weekly flights from Manchester to its hub, Hong Kong from where you can enjoy seamless connections across Asia Pacific. Four-time past winner of Skytrax 'World's Best Airline', onboard you can experience elevated dining and award-winning inflight entertainment.

*Frequency and schedule are subject to change



SINGAPORE AIRLINES

Experience award-winning service with Singapore Airlines. From the UK, choose from a daily flight from London Gatwick or five weekly flights from Manchester Airport to Singapore. Delight in a choice of up to four cabins featuring Economy Class, Premium Economy, Business Class and First Class/Suites. No matter which cabin you fly, look forward to a comforting experience with world-class service before connecting through Singapore's state-of-the-art Changi Airport.



BRITISH AIRWAYS

Wendy Wu Tours is delighted to be a British Airways preferred partner. Choose from four travel classes and experience more than a flight. Fly in comfort to key international hubs with a wide range of connecting regional flights from all over the UK. We recommend the extra space and comfort of British Airways premium economy cabin, World Traveller Plus, which is offered on selected long-haul flights.



EMIRATES

With Emirates, you can fly via Dubai, connecting key international hubs from multiple UK airports. Enjoy exceptional in-flight service, award-winning entertainment, generous seating, and the option to include a stopover in Dubai — making Emirates a popular choice for travellers.

Other airline partners to include: Qatar Airways, Japan Airlines, Vietnam Airlines, Turkish Airlines, Etihad Airways, All Nippon Airways, Air China, Finnair, Vietnam Airlines, KLM, Air France and Malaysia Airlines.

Travel with purpose

For the last 25 years we've been taking groups of travellers to unique and spectacular places, and know full well how impactful, inspiring and horizon-broadening exploring the world can be. Over the years we have been building as many mutually beneficial, sustainable and responsible relationships as possible in the destinations that we visit, so they too are able to thrive.



Local Economic Empowerment

We believe travel should positively benefit the communities we visit. That's why we prioritise locally-owned restaurants, hotels, and experiences that support local businesses and create sustainable livelihoods.

When traveling with us, you help empower local artisans, entrepreneurs, guides, drivers and so many others, ensuring that tourism leaves a positive, lasting impact.

Respectful Cultural Experiences

We are committed to fostering meaningful, authentic, and respectful interactions with the communities we visit. Our tours are designed to celebrate local traditions, honour cultural heritage, and support experiences led by local experts. We encourage travellers to engage with an open mind, follow local customs, and contribute to the preservation of cultural identity in a responsible way.

Lower Impact Travel

We are reducing our environmental impact by building more rail journeys into our itineraries, and promoting low-season travel. Trains offer a greener alternative to flying, lowering carbon emissions while providing a more immersive travel experience. By promoting more departures in the low season, we also help ease pressure on popular destinations, support local economies year-round, and create a more sustainable way to explore the world.

Sustainable Tourism Education

We believe responsible travel starts with awareness. That's why we provide our travellers with practical tips on reducing their environmental impact and supporting communities in a meaningful way. Through pre-departure resources and on-tour guidance, we empower our travellers to make informed, sustainable choices that help protect the destinations we visit for future generations.

Your loyalty matters

Many of our customers enjoy the Wendy Wu Tours experience so much that they travel with us again and again and are happy to recommend us to their friends and family.

WENDY'S CLUB

Our Wendy Wu Tours loyalty scheme will get you exclusive offers and updates before anyone else plus you'll move up membership levels with every new trip you book – which means bigger savings!

Bronze

Save £100 per person when you book your 2nd Wendy Wu Tours holiday



Silver

Save £150 per person when you book your 3rd & 4th Wendy Wu Tours holiday



Gold

Save £200 per person when you book your 5th or more Wendy Wu Tours holiday



These exceptional discounts can even be combined with any special offer.

RECOMMEND A FRIEND

We'll send you a gourmet hamper as a thank you for the first booking we receive. Plus for every subsequent booking, we'll send you £50 worth of shopping vouchers.



Terms and conditions apply. Refer to our website for full details.

WENDY WU TOURS BOOKING CONDITIONS

The following booking conditions, along with our Privacy Policy (www.wendywutours.co.uk/help-and-advice/privacy-policy/) and any other information we brought to your attention before we confirmed your booking, form the basis of your contract with Wendy Wu Tours Ltd, Newhams Yard, 151-153 Tower Bridge Road, London SE1 3JE, company number 05107061. Please read them carefully as they set out our respective rights and obligations. By asking us to confirm your booking, you confirm that you have had the opportunity to read and have read these booking conditions, the brochure and Detailed Itinerary and agree to be bound by them.

These booking conditions only apply to holiday arrangements which you book with us in the UK and which we agree to make, provide or perform (as applicable) as part of our contract with you. All references in these booking conditions to "holiday", "booking", "contract", "package", "tour" or "arrangements" mean such holiday arrangements unless otherwise stated. For tailor-made holidays, please refer to our Wendy Wu Tailor Made brochure and terms and conditions, or visit our website. In these booking conditions, "you" and "your" means all persons named on the booking (including anyone who is added or substituted at a later date) or any of them as the context requires. "We", "us" and "our" means Wendy Wu Tours Limited.

1. Your Holiday Contract

The first named person on the booking ("lead name") must be authorised to make a booking on the basis of these booking conditions by all persons named on the booking and by their parent or guardian for all party members who are under 18 when the booking is made. By making a booking the lead name confirms that he/she is so authorised. The lead name is responsible for making all payments due to us and to indemnify us for the liability of all party members. The lead name must be at least 18 when the booking is made. After we receive your booking request and all appropriate payments (see clause 4 "Payment" below), if the arrangements you wish to book are available, we will issue a confirmation invoice. A binding agreement will come into existence between us when we email your confirmation invoice to the 'lead name' or your Travel Agent. Your invoice will be sent to your travel agent or the lead name on the booking if you have booked direct with us. Please check this invoice carefully as soon as you receive it. Contact us immediately if any information which appears on the confirmation or any other document appears to be incorrect or incomplete as it may not be possible to make changes later. We regret we cannot accept any liability if we are not notified of any inaccuracies (for which we are responsible) in any document within ten days of our sending it out (five days for tickets). We will do our best to rectify any mistake notified to us outside these time limits but you must meet any costs involved in doing so. If you wish to change or cancel any arrangements later you may have to pay an amendment or cancellation charge (See clause 8).

We both agree that English Law (and no other) will apply to your contract and to any dispute, claim or other matter of any description which arises between us ("claim") (except as set out below). We both also agree that any claim (and whether or not involving any personal injury) must be dealt with under the ABTA arbitration scheme (if the scheme is available for the claim in question and you wish to use it – see clause 13) or by the Courts of England and Wales only unless, in the case of Court proceedings, you live in Scotland or Northern Ireland. In this case, proceedings can either be brought in the Courts of your home country or those of England and Wales. If proceedings are brought in Scotland or Northern Ireland, you may choose to have your contract and claim governed by the law of Scotland/Northern Ireland as applicable (but if you do not so choose, English law will apply).

2. Your financial protection

For flight-based holidays this is through our Air Travel Organiser's Licence (ATOL number 6639) issued by the Civil Aviation Authority, Gatwick Airport South, West Sussex, RH6 0YR, UK, telephone 0333 103 6350, email claims@caa.co.uk. When you buy an ATOL protected flight or flight inclusive package* from us, you will receive an ATOL Certificate. This lists what is financially protected, where you can get information on what this means for you, and who to contact if things go wrong. We, or the suppliers identified on your ATOL Certificate, will provide you with the services listed on the ATOL Certificate (or a suitable alternative). In some cases, where neither we nor the supplier are able to do so for reasons of insolvency, an alternative ATOL holder may provide you with services you have bought or a suitable alternative (at no extra cost to you). You agree to accept that in those circumstances the alternative ATOL holder will perform those obligations and you agree to pay any money outstanding to be paid by you under your contract to that alternative ATOL holder. However, you also agree that in some

cases it will not be possible to appoint an alternative ATOL holder, in which case you will be entitled to make a claim under the ATOL scheme (or your credit card issuer where applicable).

If we, or the suppliers identified on your ATOL certificate, are unable to provide the services listed (or a suitable alternative, through an alternative ATOL holder or otherwise) for reasons of insolvency, the Trustees of the Air Travel Trust may make a payment to (or confer a benefit on) you under the ATOL scheme. You agree that in return for such a payment or benefit you assign absolutely to those Trustees any claims which you have or may have arising out of or relating to the non-provision of the services, including any claim against us, the travel agent (or your credit card issuer where applicable). You also agree that any such claims may be re-assigned to another body, if that other body has paid sums you have claimed under the ATOL scheme.

*The flights and flight-inclusive packages we arrange are ATOL protected providing they are made available in the UK. For further information visit the ATOL website at atol.org.uk.

We are a member of ABTA (ABTA number W7994). If your package holiday does not include a flight, protection is provided by way of a bond held by ABTA The Travel Association, 30 Park Street London, SE1 9EQ - abta.co.uk

The combination of travel services offered to you is a package within the meaning of the Package Travel and Linked Travel Arrangements Regulations 2018. Therefore, you will benefit from the consumer rights applying to packages. We will be fully responsible for the proper performance of the package as a whole. Additionally, as required by law, we have protection in place to refund your payments and, where transport is included in the package, to ensure your repatriation in the event that we become insolvent. More information on key rights can be found by visiting www.legislation.gov.uk/uksi/2018/634/contents.

3. Your Holiday Price

Please note, changes and errors occasionally occur. You must check the price of your chosen holiday at the time of booking. We reserve the right to increase and correct errors in advertised prices at any time before your holiday is confirmed. We will advise you of any error which we are aware of and inform the new applicable price at the time of booking. Once the price of your chosen holiday has been confirmed at the time of booking, it will not be subject to change.

4. Payment

In order to confirm your chosen holiday, a non-refundable deposit of at least £350.00 per person (or full payment if booking within 75 days of departure) must be paid at the time of booking. In some cases the amount of deposit may be higher: where, for example, we need to pre-purchase flights tickets, accommodation or other services and in the case of our flight upgrade special offers, to which early airline ticketing may apply – please see the terms and conditions of individual special offers for further information. The balance of the holiday cost must be received by us not less than 75 days prior to departure. This date will be shown on the confirmation invoice. Reminders are not sent. Our preferred method of deposit payment is by bank debit card or credit card. Balance payment may be made by bank debit card, credit card or cheque (providing there is time to clear it to meet the payment schedule shown above - you should allow 5 working days for clearance from the time we receive it). If we do not receive all payments due in full and on time, we are entitled to assume that you wish to cancel your booking. In this case, we will be entitled to keep all deposits paid or due at that date. Except for flight inclusive bookings, all monies you pay to one of our authorised travel agents for your holiday with us will be held by the agent on your behalf until a contract between us comes into existence. After that point, your agent will hold the monies on our behalf until they are paid to us. For flight inclusive bookings, all monies paid to any authorised travel agent of ours for your holiday with us will be held on behalf of and for the benefit of the Trustees of the Air Travel Trust subject to the travel agent's obligation to pay such monies to us in accordance with our trading terms unless we fail. In the unlikely event of our financial failure, all monies then held by the travel agent or subsequently paid by you to the travel agent will be held by

BOOKING CONDITIONS

the agent on behalf of and for the benefit of the Trustees of the Air Travel Trust without any obligation on the agent to pay such monies to us. If you wish to amend or cancel your holiday, your original method of payment will be used to process this (e.g. bank card, credit card, refund credit note).

Please note that on very rare occasions, errors may occur when inputting prices onto our website and systems. We regret that any contract entered into on the basis of a pricing error will be invalid. In the unlikely event that this situation arises, you will be given the option to pay the correct price or cancel with a full refund.

5. Travel documents and visas

A Passport with a minimum of six months validity from the intended date of travel, and contains a minimum of two blank pages, is required for travel for the majority of countries in our programme. As visa requirements are constantly changing, you must regularly check the Foreign, Commonwealth & Development Office (FCDO) website for the most up to date entry requirements. Visa fees, where required, are included for UK British Citizen passport holders and will be specified whether included on your confirmation invoice. If you hold any other British passport (British Subject, British National Overseas) or you are a non-UK passport holder or you reside outside of the UK, you will be required to obtain your own visas at your own expense. If you hold a UK passport but were born outside the UK, this may also apply and you should contact us for more information. If you hold a UK passport but were born outside the UK, this may also apply and you should contact us for more information. It is your responsibility to ensure the visa issued to you is correct. Whilst we include the cost of the standard visa application service in your tour price (for UK British Citizen passport holders), we will pass on any additional charges incurred for non-standard visa processing, or where visa charges are increased following publication of the brochure. Should your visa application be refused for any reason and you wish to cancel your booking the cancellation charges under clause 8 will apply. An express visa process is available for an additional cost depending on the country of visit. We make no promises that your Visa application will be successful and we cannot accept bookings conditional on the issuing of a visa, or payment of the balance of the holiday cost (see clause 4) to be deferred until visas have been issued. It is your responsibility to check that you comply with all entry, passport, visa, immigration requirements and health and safety formalities applicable for your itinerary. Wendy Wu Tours accepts no responsibility in this regard. We accept no responsibility for passports lost in the post. You must ensure that you carry all necessary passport, visa and other travel documentation as required by the country you are visiting, and that all documents are in date and valid. We do not accept responsibility if you cannot travel because you have not complied with any passport, visa or immigration requirements for any part of your holiday. Failure to have any necessary travel or other documents results in fines, surcharges or other financial penalty being imposed on us, you will be responsible for reimbursing us in full.

6. Travel Insurance, Health and Safety

It is a condition of booking with us that you take out suitable travel insurance. You must be satisfied that your insurance fully covers all your personal requirements, including the cancellation of your booking and providing sufficient medical cover for illness or injury and repatriation while overseas. You must provide us with the name of your insurers and their 24 hour emergency contact number when you book or as soon as possible thereafter. Wendy Wu Tours will not be liable for any costs incurred by you due to your failure to take out suitable travel insurance from the date of booking. You will indemnify Wendy Wu Tours in respect of any assistance or payment made by us in these circumstances. Details of any compulsory health requirements applicable to British citizens for your holiday are available from the websites listed below. It is your responsibility to ensure you are aware of all recommended vaccinations and health precautions, in good time before departure. Details are available from your GP surgery and from the National Travel Health Network and Centre www.nathnac.org. Information on health can be found at www.nhs.uk and www.fitfortravel.nhs.uk. Health requirements and recommendations may change and you must check the up to date position in good time before departure. The FCDO publishes regularly updated travel information on its website www.gov.uk/foreign-travel-advice which you are recommended to consult before booking and in good time before departure.

BOOKING CONDITIONS

7. If you wish to change your booking

If, after our confirmation invoice has been issued, you wish to change your travel arrangements in any way, we will endeavour to make these changes, but it may not always be possible. Any request for changes to be made must be from the lead name on the booking or your Travel Agent. You will be asked to pay an administration charge as set out below per person and any further cost we incur together with any costs or charges incurred or imposed by any of our suppliers in making this alteration. Examples include:

- Minor amendments to the tour booked OR Minor amendments made within 30 days of departure OR Transferring between tours or changing departure date - £50
- Transferring between tours or changing departure date within 75 days of departure is not permitted and cancellation fees will apply
- Reissue of airline tickets, where possible - £50 plus any non-refundable costs of the cancelled ticket and any additional costs of the new ticket

You can transfer your booking to another person, who satisfies all the conditions that apply to your booking, by giving us notice in writing via Email as soon as possible and no later than 7 days before departure. Both you and the new traveller are responsible for paying all costs (for example air ticket cancellation fees) that we incur in making the transfer.

Once a booking is confirmed no changes are permitted otherwise than in accordance with these terms and conditions.

It is important to note that some arrangements such as certain types of air tickets cannot be changed after a booking has been made as they are sold as part of your fixed package. If your holiday includes ocean cruising, once a deposit has been placed this is non-refundable and non-transferable to a later date. You will be advised of any such non refundable charges prior to confirming your booking. Any change will be treated as a cancellation in which case cancellation charges will apply. Note that only one change per booking is permitted. Any requests for changes to your booking must be emailed to operations@wendywtours.co.uk.

8. If you wish to cancel your booking

Because we start to incur costs in relation to your arrangements from the time we confirm your booking, if you cancel we have to make a charge and the nearer to your departure date you cancel, the higher the charge will be. If you wish to cancel a confirmed booking you must do so by writing via Email. Cancellation takes effect from the day we receive your email. Cancellation charges are shown in the table below and will be payable immediately on cancellation. Where the cancellation charge is shown as a percentage, this is calculated on the basis of the total cost payable by the person(s) cancelling excluding insurance premiums and amendment charges. Insurance premiums and amendment charges are not refundable in the event of cancellation:

75 or more days	Retention of deposit
74– 42 days	30% including deposit
41 – 28 days	60% including deposit
27 – 15 days	90% including deposit
14 days or less	100% including deposit

Depending on the reason for cancellation, you may be able to reclaim these cancellation charges (less any applicable excess) under the terms of your insurance policy. Claims must be made directly to the insurance company concerned and we have no liability in these circumstances.

Important Note: Certain arrangements may not be amended after they have been confirmed and any alteration or cancellation could incur a cancellation charge of up to 100% of that part of the arrangements in addition to the charge above.

Cancellation by You due to Unavoidable & Extraordinary Circumstances:

You may terminate the package travel contract at any time before the start of the package without paying a cancellation charge in the event of “unavoidable and extraordinary circumstances” occurring at the place of destination or its immediate vicinity which will significantly affect the performance of the package or carriage to your holiday destination. In these circumstances, we shall provide you with a full refund of the monies you have paid but we will not be liable to pay you any additional compensation. In order to rely on this clause you must be able to show that, based on the information available at the time of cancellation, there was no longer a reasonable possibility of your holiday going

ahead (either at all or without being significantly affected).

“Unavoidable and extraordinary circumstances” means any event beyond our or our supplier’s control, the consequences of which could not have been avoided even if all reasonable measures had been taken. Examples may include warfare, other serious security problems such as terrorism, significant risks to human health such as the outbreak of serious disease at the travel destination, or natural disasters such as floods, earthquakes or weather conditions which significantly affect travel to the travel destination as agreed in the package travel contract.

This condition 8 outlines the rights you have if you wish to cancel your booking. Please note that there is no automatic statutory right of cancellation under the Consumer Contracts (Information, Cancellation and Additional Charges) Regulations 2013 .

9. If we change or cancel your holiday

Occasionally, we have to make changes to and correct errors in brochure and other details both before and after bookings have been confirmed and cancel confirmed bookings. Whilst we always endeavour to avoid changes and cancellations, we must reserve the right to do so. The right is also reserved to any change in airline, aircraft types and vessels scheduled for any specific departure.

If we change your holiday

Even after we have confirmed your booking we may have to make alterations to confirmed arrangements. Most such alterations will be minor and of little effect on your overall arrangements and while we will do our best to notify you of any such minor change before your departure, we will have no other liability to you. Occasionally we may have to make a significant change to your confirmed arrangements.

Significant changes include but are not limited to the following (which are illustrative):

- Change of UK departure airport. (A change from one London airport to another is not considered a major change. London airports are Heathrow, Gatwick, Stansted, Luton and London City)
- Change of your time of departure or return by more than 12 hours
- Change of resort
- Change of holiday accommodation to accommodation of a lower official rating.

If we have to make a significant change, we will notify you as quickly as possible and offer you the following options:

- (a) (for significant changes) accepting the changed arrangements or
- (b) purchasing an alternative holiday from us, of a similar standard to that originally booked if available. We will offer you at least one alternative holiday of equivalent or higher standard for which you will not be asked to pay any more than the price of the original holiday. If the holiday is cheaper than the original one, we will refund the price difference. If you do not wish to accept the holiday we specifically offer you, you may choose any of our other available holidays. You must pay the applicable price of any such holiday. This will mean you paying more if it is more expensive or receiving a refund if it is cheaper or
- (c) cancelling or accepting the cancellation in which case you will receive a full refund of all monies you have paid to us.

In addition, you will receive as compensation a credit towards the cost of your arrangements, or any alternative selected, of the amount shown below. In all cases we will have no liability for any other or greater compensation, or for expenses or losses incurred as a result of any change.

Period before departure date notification given by us	Compensation per fare paying passenger (excluding children)
0 – 7 days	£50
8 – 14 days	£40
15 – 28 days	£30
29 – 42 days	£20
43 – 75 days	£10

If we cancel your holiday

If we have to cancel your booking we will not cancel less than 75 days before your departure date, except for ‘unavoidable and extraordinary circumstances’, or failure by you to pay the final balance, or because the minimum number required for the package to go ahead hasn’t been reached. If your holiday is cancelled you can either have a refund of all monies paid or accept an alternative holiday of comparable standard from us if we offer one (we will refund any price difference if the alternative is of a lower value).

No compensation will be payable and the above options for either a change or cancellation will not be available if we cancel as a result of your failure to comply with any requirement of these booking conditions entitling us to cancel (such as paying on time) or where a change is a minor one.

Please note, in the event of a cancellation, airline schedule change or change of departure airport, we are not liable to cover the cost of flights, trains or any form of transportation or any other expenses incurred by these changes.

10. Our liability to you

(1) We will accept responsibility for the arrangements we agree to provide or arrange for you as an “organiser” under the Package Travel and Linked Travel Arrangements Regulations 2018, as set out below and as such, we are responsible for the proper provision of the travel services specifically included in your package, as set out in your confirmation invoice, Detailed Itinerary and the information we provided to you regarding the services prior to booking. Please note that we shall not be responsible for any additional services provided to you, whether provided by the travel service providers or otherwise, which are not set out in your confirmation invoice, Detailed Itinerary and the information we provided to you regarding the services prior to booking.

(2) We will not be responsible or pay you compensation for any personal injury or death unless you are able to prove that it was caused by our negligence or the negligence of our suppliers.

(3) We will not be responsible for any injury, illness, death, loss (for example loss of enjoyment), damage, expense, cost or other sum or claim of any description whatsoever which results from any of the following:

- the act(s) and/or omission(s) of the person(s) affected or any member(s) of their party or
- the act(s) and/or omission(s) of a third party not connected with the provision of your holiday and which were unforeseeable or unavoidable or
- ‘Unavoidable and Extraordinary Circumstances’ as defined in clause 8 above.

(4) Please note, we cannot accept responsibility for any services which do not form part of our contract. This includes, for example, any additional services or facilities which your hotel or any other supplier agrees to provide for you where the services or facilities are not advertised by us and we have not agreed to arrange them as part of our contract including any excursion you purchase in resort. Please also see clause 11 “Excursions”.

(5) As set out in these booking conditions, we limit the maximum amount we may have to pay you for any claims you may make against us. Where we are found liable for loss of and/or damage to any luggage or personal possessions (including money), the maximum amount we will have to pay you is equivalent to the excess on your insurance policy which applies to this type of loss per person in total because you are required to have adequate insurance in place to cover any losses of this kind. For all other claims which do not involve death or personal injury, if we are found liable to you on any basis the maximum amount we will have to pay you is three times the price (excluding insurance premiums and amendment charges) paid by or on behalf of the person(s) affected in total unless a lower limitation applies to your claim under clause 10(6) below. This maximum amount will only be payable where everything has gone wrong and you have not received any benefit at all from your holiday.

(6) Where any claim or part of a claim (including those involving death or personal injury) concerns or is based on any travel arrangements (including the process of getting on and/ or off the transport concerned) provided by any air, sea, rail or road carrier to which any international convention or regulation applies, extent of our liability will in all cases be limited as if we were carriers under the appropriate Conventions, which are the Athens Convention (with respect to sea travel); The Berne/Cotif Convention (with respect to rail travel) and The Paris Convention (with respect to hotel arrangements). You can ask for copies of these Conventions from our offices. Please contact us. In addition, you agree that the operating carrier or transport company’s own ‘Conditions of Carriage’ will apply to you on that journey. When arranging transportation for you, we rely on the terms and conditions contained within these international conventions and those ‘Conditions of Carriage’. You acknowledge that all of the terms and conditions contained in those ‘Conditions of Carriage’ form part of your contract with us, as well as with the transport company and that those ‘Conditions of Carriage’ shall be deemed to be included

by reference into this contract. When making any payment, we are entitled to deduct any money which you have received or are entitled to receive from the carrier for the claim in question.

(7) Subject to these Booking Conditions, if we or our suppliers negligently perform or arrange those services set out in the confirmation invoice, Detailed Itinerary and the information we provided to you regarding the services prior to booking and we don’t remedy or resolve your complaint within a reasonable period of time, and this has affected the enjoyment of your package holiday you may be entitled to an appropriate price reduction or compensation or both. You must inform us without undue delay of any failure to perform or improper performance of the travel services included in this package. The level of any such price reduction or compensation in respect of any claim for damages or compensation whatsoever will be calculated taking into consideration all relevant factors such as but not limited to: following the complaints procedure as described in these Booking Conditions and the extent to which ours or our employees’ or suppliers’ negligence affected the overall enjoyment of your holiday. Please note that it is your responsibility to show that we or our supplier(s) have been negligent if you wish to make a claim against us.

(8) It is a condition of our acceptance of liability under this condition that you notify any claim to us and our supplier(s) strictly in accordance with the complaints procedure set out in these conditions.

(9) Where any payment is made, the person(s) receiving it (and their parent or guardian if under 18 years) must also assign to us or our insurers any rights they may have to pursue any third party and must provide ourselves and our insurers with all assistance we may reasonably require.

(10) Please note, we cannot accept any liability for any damage, loss, expense or other sum(s) of any description (1) which on the basis of the information given to us by you concerning your booking prior to our accepting it, we could not have foreseen you would suffer or incur if we breached our contract with you or (2) which did not result from any breach of contract or other fault by ourselves or our employees or, where we are responsible for them, our suppliers. Additionally we cannot accept liability for any business losses including self employed loss of earnings.

11. Excursions

We may provide you with information (before departure and/ or when you are on holiday) about activities and excursions which are available in the area you are visiting. We have no involvement in any such activities or excursions which are neither run, supervised nor controlled in any way by us. They are provided by local operators or other third parties who are entirely independent of us. They do not form any part of your contract with us even where we suggest particular operators/other third parties and/or assist you in booking such activities or excursions in any way.

If you feel that any of the activities or excursions referred to in our brochure, on our website and in our other advertising material which are not part of our contract are vital to the enjoyment of your holiday, write to us immediately and we will tell you the latest known situation. If we become aware of any material alterations to area information and/or such outside activities or excursions which can reasonably be expected to affect your decision to book a holiday with us, we will pass on this information at the time of booking.

12. Complaint procedure

If you have a problem during your holiday concerning any service provided as part of the arrangements we have confirmed, you must inform our National Escort or Local Guide (or, if none available, with our local agent or hotel manager) immediately to enable them to try to resolve the matter. Any notification must be put in writing and given to our representative / agent and the supplier as soon as possible. Our emergency number is manned 24 hours a day, seven days a week and is 01888 288 288. Until we know about a complaint or problem, we cannot begin to resolve it. If you remain dissatisfied, however, you must write to us within 28 days of your return to the UK giving your booking reference and full details of your complaint. Please address all correspondence to customer@wendywtours.co.uk. Only the lead name should write to us. If you fail to follow this simple complaints procedure, your right to claim any compensation you may otherwise have been entitled to may be affected or even lost as a result.

13. ABTA Arbitration

As ABTA members, we are obliged to maintain a high standard

of service to you by ABTA’s Code of Conduct. Disputes arising out of, or in connection with your booking which cannot be amicably settled may be referred to arbitration if you so wish under a special scheme arranged by ABTA Ltd and administered independently. The scheme provides for a simple and inexpensive method of arbitration and is approved by the Chartered Trading Standard’s Institute. Further information on the Code of Conduct and ABTA’s assistance in resolving disputes can be found at www.abta.com.

14. Conditions of Suppliers

Many of the services which make up your holiday are provided by independent suppliers. Those suppliers provide these services in accordance with their own terms and conditions. Some of these terms and conditions may limit or exclude the supplier’s liability to you, usually in accordance with applicable international conventions (see clause 10(6)). Copies of the relevant parts of these terms and conditions and of the international conventions are available on request from ourselves or the supplier concerned.

15. Behaviour

All our customers are expected to conduct themselves in an orderly and acceptable manner and not to disrupt the enjoyment of others. If we or any other person in authority is of the reasonable opinion that you or any member of your party is behaving in such a way as to cause or be likely to cause danger or upset to any other person or damage to property, we will be entitled to terminate the holiday of the person(s) concerned. The person(s) concerned will be required to leave the accommodation or other service and we will have no further responsibility to them including any return travel arrangements. No refunds will be made and we will not pay any expenses or costs incurred as a result of the termination. You will be responsible for making full payment for any damage or loss caused by you or any member of your party during your time away. Payment must be paid directly at the time to the service supplier concerned. If the actual cost of the loss or damage exceeds the amount paid where estimated, you must pay the difference once known. If the actual cost is less than the amount paid, the difference will be refunded. You will also be responsible for meeting any claims subsequently made against us and all costs incurred by us (including our own and the other party’s full legal costs) as a result of your actions.

16. Special Requests

If you have any special requests, including dietary requirements, you must inform us prior to booking. Although we will endeavour to pass any reasonable requests on to the relevant supplier, we regret we cannot guarantee any request will be met. Failure to meet any special request will not be a breach of contract on our part. Confirmation that a special request has been noted or passed on to the supplier or the inclusion of the special request on your confirmation invoice or any other documentation is not confirmation that the request will be met. Unless and until specifically confirmed, all special requests are subject to availability. Unless you receive written confirmation from the supplier that a special request will be complied with, you must assume that it will not be. We regret we cannot accept any conditional bookings, i.e. any booking which is specified to be conditional on the fulfilment of a particular request. All such bookings will be treated as “standard” bookings subject to the above provisions on special requests.

17. Fitness, Medical Conditions, Disabilities & Illness

Please note that our tours cover areas with varying terrain (including steps, steep hills and uneven walkways) which can be difficult to negotiate. An indicated ‘physical rating’ is outlined clearly in this brochure and in the tour specific Detailed Itineraries. It is your sole responsibility to ensure that you are sufficiently fit and well to negotiate these areas, without any adverse effect on the overall group or tour operation. You should check that your proposed areas of travel are suitable dependent on your own health, including any medical condition and/ or disability that you may have. If you or any member of your party has any medical condition or disability which may affect your holiday or has any special requirements as a result of any medical condition or disability (including any which affect the booking process), please tell us before you make your booking so that we can assist you in considering the suitability of the arrangements and/ or making the booking. Dietary allergy requests must be made at time of booking and will be passed on to the relevant supplier. In any event, you must give us full details via Email at the time of booking and whenever any change in the condition or disability occurs. You must also promptly advise us if any medical condition or disability which may affect your holiday develops after your booking has been confirmed.

BOOKING CONDITIONS

We may require you to produce a doctor’s certificate certifying that you are fit to participate. Acting reasonably, if we are unable to properly accommodate the needs of the person(s) concerned, we will not confirm your booking or if you did not give us full details at the time of booking, we will cancel it and impose applicable cancellation charges when we become aware of these details.

18. Sickness Policy

If due to illness or failure to satisfy medical requirements (for example compulsory vaccinations or testing) we or any of our suppliers refuse to transport or accommodate you, we may (acting reasonably) exclude you from commencing or continuing the trip. In this situation we will provide you with reasonable assistance to make alternative travel arrangements and where possible to rejoin your group when medically cleared to do so. This will be at your own cost and you should contact your travel insurance provider immediately. Note that we will not be liable to refund the cost of your trip (or any part of it) under these circumstances.

19. Flights

If you or any member of your party misses your flight or other transport arrangement, it is cancelled or you are subject to a delay of over 3 hours for any reason, you must contact us and the airline or other transport supplier concerned immediately.

Under UK Law, you have rights in some circumstances to refunds and/ or compensation from the airline in cases of denied boarding, cancellation or delay to flights. Full details of these rights will be publicised at UK airports and will also be available from airlines. If the airline does not comply with these rules you should complain to the Civil Aviation Authority at www.caa.co.uk/passengers. Reimbursement in such cases is the responsibility of the airline and will not automatically entitle you to a refund of your holiday price from us. If, for any reason, you do not claim against the airline and make a claim for compensation from us, you must, at the time of payment of any compensation to you, make a complete assignment to us of the rights you have against the airline in relation to the claim that gives rise to that compensation payment. A delay or cancellation to your flight does not automatically entitle you to cancel any other arrangements even where those arrangements have been made in conjunction with your flight.

The carrier(s), flight timings and types of aircraft shown in this brochure or on our website and detailed on your confirmation invoice are for guidance only and are subject to alteration and confirmation. We shall inform you of the identity of the actual carrier(s) as soon as we become aware of it. The latest flight timings will be shown on your tickets which will be dispatched to you approximately two weeks before departure. You should check your tickets very carefully immediately on receipt to ensure you have the correct flight times. If flight times change after tickets have been dispatched we will contact you as soon as we can to let you know.

Please note the existence of a “UK Air Safety list” (available for inspection at <https://www.caa.co.uk/commercial-industry/airlines/licensing/requirements-and-guidance/third-country-operator-certificates/>) detailing air carriers that are subject to an operating ban within the UK.

20. Prompt Assistance

If, whilst you are on holiday, you find yourself in difficulty for any reason, we will offer you such prompt assistance as is appropriate in the circumstances. In particular, we will provide you with appropriate information on health services, local authorities and consular assistance, and assistance with distance communications and finding alternative travel arrangements. Where you require assistance which is not owing to any failure by us, our employees or sub-contractors will not be liable for the costs of any alternative travel arrangements or other such assistance you require. Any supplier, airline or other transport supplier may however pay for or provide refreshments and/ or appropriate accommodation and you should make a claim directly to them. Subject to the other terms of these Booking Conditions, we will not be liable for any costs, fees or charges you incur in the above circumstances, if you fail to obtain our prior authorisation before making your own travel arrangements. Furthermore, we reserve the right to charge you a fee for our assistance in the event that the difficulty is caused intentionally by you or a member of your party, or otherwise through your or your party’s negligence.

Note: please see www.wendywtours.co.uk/help-and-advice/booking-conditions for the most up-to-date version of our booking conditions.

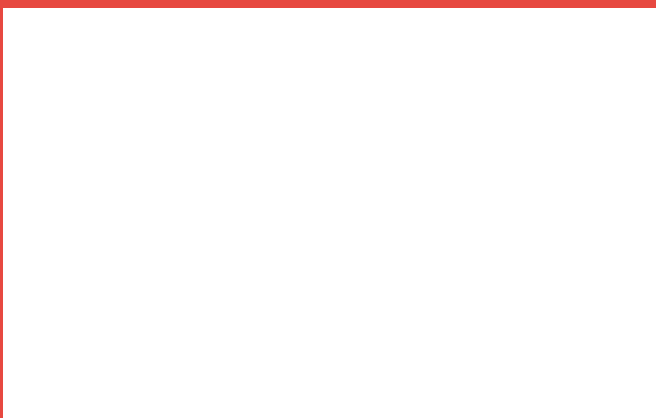
TOP REASONS TO CHOOSE WENDY WU TOURS

- Fully inclusive prices with no hidden extras
- Outstanding guides
- Unrivalled knowledge and expertise
- Specialist advice from our experienced consultants
- Extensive range of group, private and tailor-made holidays
- Depart from many regional UK airports
- Visa service included
- Holder of Feefo Gold Trusted Service Award
- Safe and secure with ABTA, ATOL & IATA
- Winner of industry's 'Best Long Haul Specialist Operator' 15 years in a row

WE OFFER TOURS AND TAILORMADE TRAVEL TO DESTINATIONS ACROSS THE WORLD



To book please call or visit your preferred travel agent.



Wendy Wu Tours Limited
Newhams Yard
151-153 Tower Bridge Road
London, SE1 3JE

info@wendywutours.co.uk
wendywutours.co.uk

Opening Hours:
Mon-Fri 9:00am – 5pm
Sat and Bank Holidays 10:00am – 4pm
Sun – Closed

Opening times may vary at different times of the year. Please visit wendywutours.co.uk for updates.


ABTA No W7994

