



Wendy Wu Tours

JAPAN

2018-2019



WELCOME TO JAPAN

Wendy Wu Tours loves Japan, and it's clear that you do too!

With the launch of our first dedicated Japan brochure last year, the demand for our Japan tours has grown and grown, and the reviews that we've had from those who have already travelled are simply fantastic. In fact, we are now the UK's leading group escorted tour operator to Japan!

Of course, we've applied the highly successful Wendy Wu Tours formula to all of our Japan holidays. We make sure that as well as seeing

the big sights, you are also immersed in the culture, with plenty of authentic Japanese experiences with our fantastic National Escorts and local guides showing you the very best of their homeland.

In 2017, we're delighted that we have been able to increase the number of dates we can offer for the spring. Now in 2018 and 2019, even more people are able to share the magic of the cherry blossom season with us.

Wendy and the team look forward to welcoming you to Japan soon!



吴玲 Wendy

Wendy Wu – Owner, Wendy Wu Tours



A GUIDE TO WENDY WU TOURS

PAGES 4-13

Discover the world of Wendy Wu, what we do and why we do it so well.



JAPAN TOURS

PAGES 14-27

Experience the iconic highlights of Japan and immerse yourself in the country's unique culture.



TAILORMADE TRAVEL

PAGES 28-33

Travel where, when and how you want. Create your dream Japan itinerary with the help of our tailormade experts.



EXTENSIONS & STOPOVERS

PAGES 34-43

It's easy to add a little something extra to your Japan adventure with our range of stopovers.

2018 CHERRY BLOSSOM

Departures in Spring 2018 are already filling fast! We strongly recommend booking now for the greatest choice and best prices.

AWARD-WINNING EXPERTISE



DISCOVER JAPAN WITH WENDY WU TOURS

Japan is an archipelago packed with futuristic cities, imperial heritage and unique culture. Add in epic natural beauty and phenomenal cuisine, and you have a dream destination just begging to be explored.

WENDY'S TOP 8 JAPAN SIGHTS

1 MOUNT FUJI

With its perfectly proportioned cone, Mt Fuji is Japan's iconic sight so we include it on all of our tours.



2 HIROSHIMA

A city that needs little introduction, Hiroshima today is a modern, vibrant city. Visit the tranquil Peace Memorial Park to remember past events on our 'Jewels of Japan' tour (pages 20-21) or it can easily be added as an extension to any tour.



3 KYOTO

Kyoto is Japan's ancient capital and cultural hub, packed with enchanting sights, 17 of which are UNESCO World Heritage-listed. Kyoto features on all our Japan itineraries.



4 NARA

A city famous for its bowing deer and being the birthplace of Japanese culture, how could we leave that off the list? Visit on our 'A Week in Japan' (Pages 18-19) or 'Discover Japan' itineraries (pages 22-23).



5 KOYA-SAN

A holy mountain dotted with monasteries, the wonderfully atmospheric and tranquil Koya-san features on our 'Discover Japan' and 'Trails of Japan' tours (pages 22-23 & 24-25).



6 TOKYO

A big, bright and brash city, Japan's capital perfectly epitomises the clash of modern and traditional that is the Japan of today. Tokyo, of course, features on all Japan tours.



7 SNOW MONKEYS

The Japanese Macaque are a delight to watch as they bathe in natural hot pools close to the alpine town of Yudanaka. Meet them on our 'Trails of Japan' tour (pages 24-25).



8 HIMEJI CASTLE

The best example of Japanese feudal castle architecture, Himeji Castle is seriously impressive – see it for yourself on our 'Jewels of Japan' (pages 20-21) and 'Trails of Japan' tours (pages 24-25).



JAPAN FOR ALL SEASONS

Japan is a country that can be enjoyed year round; here is our guide to what is happening when, to help you decide what time of year you'd like to experience it.



CHERRY BLOSSOM SEASON

The Japanese have been writing poetry to and painting pictures of cherry blossoms for centuries, and even have a dedicated word for going out to fields and parks to appreciate it – 'hanami' which literally translates as 'looking at flowers'. When you gaze on the sea of soft pink flowers it's easy to see why both they and many international visitors are so enamoured. Starting in late January in the sub-tropical south, the blossoms sweep up the country, reaching Tokyo and Kyoto in the first week of April, though this can vary due to the weather. In the two weeks after they first bloom, locals and visitors alike stroll, sit and picnic beneath the laden boughs, but we particularly like to enjoy them lit up by lanterns at twilight. Cherry blossom season is extremely popular and our tours often sell out a long way in advance. If you want to travel during this period, make sure you book early!

AUTUMN LEAVES

Japan's deep and rich autumn colours travel the opposite way to the cherry blossom, starting in the very north in September and travelling downwards, reaching its peak in Tokyo, Kyoto and the surrounding areas from November. In the parks and temple gardens of the cities, the leaves of the multitude of maple and ginkgo trees turn vibrant shades of red, yellow and orange; if you are travelling into the Japanese Alps, you're in for an even more spectacular sight.



SUN AND SNOW

Japan's summer, June to August, may be hot and humid but it is the season for festivals and fireworks. Enjoy impromptu celebrations or escape to the mountains to find the cooler climes and maybe do some hiking – this is also the only time of year that you are able to climb Mt Fuji.

In the winter, outside the cities, the country becomes a snow-covered wonderland. Vibrant ski resorts spring into action, ice festivals take place (Sapporo's is the world's biggest) and the Japanese Macaques earn their Snow Monkey moniker. Oh, and there is nothing better than the glorious warm waters of an onsen on a cold winter's day!



THE WENDY WU TOURS DIFFERENCE

10 REASONS WHY YOU SHOULD CHOOSE WENDY WU TOURS

1. NO ONE KNOWS ASIA LIKE WE DO

All of our staff have travelled throughout Asia and can provide you with detailed information about our itineraries and touring styles, and will help personalise your holiday. We are known as the UK's specialist operator to Asia, and have been building our global reputation since 1998, one satisfied customer at a time.



3. INDUSTRY-LEADING NATIONAL ESCORTS

All of our group tours are accompanied from beginning to end by a dedicated, knowledgeable National Escort. Our experienced teams in Asia ensure that Wendy Wu Tours has a reliable presence on which you can always depend. We regularly receive letters that sing the praises of our team over in Asia – their knowledge, warmth, supportive nature, passion and gentle humour is something we are genuinely very proud of.

2. AUTHENTIC EXPERIENCES

Our extensive experience and local expertise means we can take you to places rarely visited and those you have always dreamed of exploring. We have been blazing trails into this ever-developing continent for 20 years, and pride ourselves in delivering authentically Asian experiences. On our tours, you will have the opportunity to experience and try your hand at traditional and ancient crafts; and there will be many an opportunity to meet local people and get a glimpse of a lifestyle so different to your own.

We continue to redefine travel to Japan, and are proud to offer a wide variety of tours to this amazing country.



4. WE LOVE SOLO TRAVELLERS

Our group tours are a great opportunity to share your experiences with like-minded people. We welcome plenty of solo travellers on our tours, and receive great feedback from them about the friendly and sociable atmosphere of our groups. Even better, for all of our Japan group tours if you are a single traveller and are willing to share a room, you won't have to pay a single supplement.



5. HAND-PICKED HOTELS

Over 19 years of taking people to Asia means we know exactly where to stay. We have superb relationships with our hotel partners in the region, meaning our groups are always prioritised and well looked after. We inspect our hotels regularly to ensure that they reach our high standards of cleanliness, safety and comfort. We pick

the right hotel for the specific destination, meaning your accommodation can range from a smart business hotel in one city to more traditional accommodation in a smaller town. Wherever you are staying you will have a peaceful and comfortable night's sleep in preparation for the next day's adventures. See page 44.

6. UNRIVALLED AIRLINE CHOICE

Unlike other operators, we have access to airfares from all the leading airlines, giving you the ultimate choice of flights which are convenient for where you live, offering stopovers where you want and the upgrades you require. See page 50.



7. TRAVEL IN COMFORT

The transport selected as part of your tour is intended to combine convenience and comfort with an enjoyably authentic travel experience. You will benefit from our seat-and-a-half policy on our coaches, allowing you to watch incredible scenery in comfort. Our Group Tours are predominantly conducted using air conditioned coaches and trains. See page 46.



8. LOCAL TRANSPORT

Japan's transport is well-known for being efficient, clean and convenient. This is why we like to make sure that you get to travel with the locals, making use of the world-renowned bullet trains that will whizz you from city to city in no time. Tailormade tours also take advantage of the local city transport systems.



9. REGIONAL FLAVOUR

Meals included in our tours are planned to give you a genuine taste of the regions we visit. We make sure that the food on our tours is safe, fresh, features minimal spice and includes plenty of vegetables. Breakfast is a combination of local and western food, usually served buffet style at the hotel you are staying in. Lunches and dinners consist of traditional cuisine and are served at reputable local restaurants. Highlights may include sushi, freshly-made soba noodles, okonomiyaki and plenty of ramen.



THE WENDY WU TOURS DIFFERENCE

10. OUR GREAT VALUE FULLY INCLUSIVE TOURS

- ✓ Return international economy flights, taxes and current fuel surcharges
- ✓ All accommodation
- ✓ All or some meals
- ✓ All transportation and transfers
- ✓ All sightseeing and entrance fees
- ✓ English speaking National Escort
- ✓ Specialist advice from our experienced travel consultants
- ✓ Comprehensive tour dossiers and travel guides
- ✓ Safe and secure with ABTA, ATOL and IATA

The only things you may have to pay for are personal expenditure e.g. drinks, optional excursions or shows, insurance of any kind, and early check-in or late check-out (this cannot be guaranteed). Meals on our Immerse Yourself and Private Tours are indicated on the tour pages.

YOUR TOUR GUIDES

Your guide is often the difference between a good holiday and a truly remarkable holiday. On all of our group tours you will be escorted by a dedicated National Escort for the entire duration of your trip. Their unrivalled knowledge, passion, experience and expertise will astonish you.



AWARD-WINNING LOCAL EXPERTISE

Our guides are utterly committed to Wendy Wu Tours and the vast majority have been with us for many years. We ensure that the individual tasked with the responsibility to keep you safe, happy, entertained and inspired is someone whom you should have absolute trust in; and that they intimately understand the eccentricities of the local way of doing things.

Our high standards are seamlessly communicated to our ground operations and fully maintained across the organisation.

All of our National Escorts go through rigorous and ongoing training and are completely fluent in English.

ALL OUR NATIONAL ESCORTS

- Have a minimum of five years experience in guiding
- Are fluent in English
- Go through rigorous and ongoing training programmes
- Are at your service 24 hours a day
- Above all they love to showcase their country and culture

YOUR TOUR GUIDES

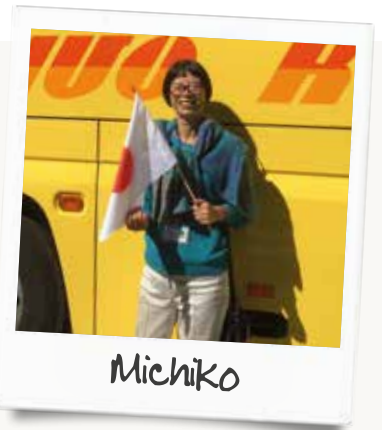


Takako

"Being a tour guide is so much fun! I get to explore my country – no matter how many times I visit Kyoto I always discover new things – with people who can offer a different perspective. I like to make sure my groups get to experience our culture as much as possible, because travel isn't just about the things that you see, it's also about the things that you do."

Mr McIntosh, Discover Japan

"Our tour guide Takako Kaneko made the holiday. She was excellent, informative, hardworking and had obviously researched information for us."



Michiko

"I am very experienced at leading tour groups and I am always ready to welcome the next group to my country. One of the best things about my job is getting to meet lots of people from other countries, and I know that they enjoy spending time learning about my country – it's a great cultural exchange!"



Yoko

Mr Degville, Jewels of Japan

"A special thank you to Yoko our tour guide, whose friendly, professional and organised approach to the tour made sure everything ran smoothly and made the trip to Japan so memorable. Well done Yoko!!"

"I always treat my tour groups like one big family, making sure that everyone is happy and healthy throughout our time together. I am very passionate about Japanese history – to me it is completely fascinating. If anyone is interested in learning about Samurai or the Meiji Restoration, you'll just have to come to Japan and ask me!"



Mr Locke, Discover Japan

"We cannot praise our guide Michiko enough. She was tireless in her efforts to make it an enjoyable and informative trip for everybody. Nothing was too much trouble for her. Her range of knowledge and general tour guide skills were outstanding, and she had a charming personality."



"I love sharing the culture of my country with visitors, that's why I became a tour guide! Getting to introduce people to things that are unique to Japan, from noodles and sake to classical gardens and temples is something that I truly enjoy – learning about our culture is a sure way to understand more about Japan as a whole."

Mrs Brownridge, Jewels of Japan

"Our guide Michiko 'made' this tour with her charm, knowledge and lots of interesting details and her sense of humour."



Michiko

TRAVELLERS' TALES

We love to hear your travel stories and holiday highlights – knowing that you love Japan just as much as we do drives us to achieve even higher standards!

HERE ARE SOME OF OUR FAVOURITES:



“The programme was varied and covered a lot of the ‘Jewels of Japan’. As a train enthusiast, the bullet train excursions were a highlight and the variety of restaurants and food gave a taste of the real Japan. Recommended!”

Paul,
Jewels of Japan, May 2017

97% | customer service rating
(rated as good or excellent)

98% | tour experience rating
(rated as good or excellent)

Based on over 1,000 feefo customer reviews.

“The tour was fantastic, probably one of the best tours I have done so far. All the activities and hotels were great, and we had the full 100% cherry blossoms in Kyoto and Himeji Castle.”

Esther,
Jewels of Japan, April 2017



“The quality and variety of food was excellent. We visited some very interesting places. Our Japanese guide Takako Kaneko was excellent.”

Mr and Mrs Thomas,
Jewels of Japan, October 2016



“As all meals and entry to various sights are included in the price, you know from the word go how much the holiday is going to cost. It was great to sit back and enjoy our tour with no added worries!”

Patricia,
Jewels of Japan, April 2017



“I learned so much about Japanese culture and history on this tour and our guide looked after us so well – it was an unforgettable way to see Japan.”

Francis Plant, Discover Japan, November 2016



“We loved all of the cultural activities, particularly the drumming and kimono dress up, and spending the night at the monastery at Koya-san with morning chanting with the monks was such an honour. This tour offered us everything we wanted out of our trip.”

Mr and Mrs Hawkins,
Trails of Japan May 2017

“Thank you very much Wendy Wu. Best holiday we have ever had! Loved every minute!”

Mrs Shetty,
Discover Japan, September 2016

feefo
The Global Feedback Engine

We are keen to receive as much feedback as we can. We have partnered with independent online review site, feefo, to give you the chance to tell us what you think. You will receive an email from feefo after booking and once again after you have travelled so you can rate our service and tour experience.



JAPAN TOURS

Japan is a land like no other. Culturally unique and full of vibrancy with spectacular scenery, you are assured a once-in-a-lifetime experience. Join us for an authentic taste of this fascinating country.

YOUR HANDY GUIDE

Discover the highlights with our range of fully-inclusive Classic Tours, delve deeper into Japan's culture on the adventurous Immerse Yourself Tour, or take a Private Tour for a more personal experience.


OUR TOURS INCLUDE:

- Comprehensive touring
- Authentic cultural experiences
- Knowledgeable National Escorts
- International flights & taxes
- All accommodation
- All or some meals
- All transportation on tour
- Specialist advice from our travel consultants


THE KEY TO OUR TOURS

Our group tours are graded as moderate and active to reflect the level of fitness required and degree of cultural immersion. Just look for the icons on the page.

MODERATE

 Tours require a higher level of fitness and may include longer periods of sightseeing. Easy walking, moderate altitude and greater cultural immersion may feature.

ACTIVE

 Tours require a good level of fitness, as they are physically more demanding. They may involve hiking, cycling and travel to areas where facilities are more traditional in nature.

Please see our tour dossiers on the website or contact us if you require any advice.

CULTURAL IMMERSION

Discover the fun, quirky side of Japan, and learn all about its rich and unique culture and heritage with cultural experiences and in-depth touring.



LOCAL CUISINE

From sushi to sake and teriyaki to tempura, delight in the tastes of Japan. Our classic tours include all meals whilst our Immerse Yourself and Private tours are more flexible.



GREAT VALUE

With a wide range of inclusions, many cultural experiences, expert guiding and international flights, all our tours represent great value for money.



TICK OFF THE BIG SIGHTS

You get to tick off Japan's big, awe-inspiring sights whether it's the classic Toyko, Mt Fuji, Kyoto route or something a little more comprehensive.



TRAVEL WITH AN EXPERT

Our National Escorts are top of their field – their unparalleled knowledge and talent will help your holiday become an even more unforgettable experience.



WHERE DO YOU WANT TO GO?

Dreamed of seeing Mt Fuji? Wanting to visit historical Nara or see a fluffy snow monkey in the flesh? Whatever your must-see sight, this handy table will tell you which tours you will see it on, along with the other big sights which are also included.

A couple more handy tips: if you have limited time and just want to tick off the big sights, try A Week in Japan; if you're looking for more culture and to experience it in a more active way, try Trails of Japan; to delve a little deeper and see more of Japan's treasures, book onto Jewels of Japan or Discover Japan.

JAPAN TOURS	DAYS	PAGE	TOKYO	MT FUJI	KYOTO	HIROSHIMA	HIMEJI	NARA	SNOW MONKEYS
A Week in Japan	8 days	18	●	●	●	Optional		●	
Jewels of Japan	11 days	20	●	●	●	●	●		
Discover Japan	13 days	22	●	●	●	Optional		●	
Trails of Japan	13 days	24	●	●	●	Optional	●		●
Wonders of Japan (Private)	10 days	26	●	●	●	Optional	Optional	Optional	●

A WEEK IN JAPAN

Discover Japan's essential highlights on this great-value tour. Explore the historical cities of Kyoto and Nara, be awestruck by the beauty of Mt Fuji and experience the bright lights of Tokyo and Osaka.

8 DAYS FROM

PER PERSON £3,690

FULLY INCLUSIVE FROM THE UK

MODERATE

▲ OSAKA CASTLE

Price includes

All meals (6 breakfasts, 5 lunches & 6 dinners)

- International flights and current taxes
- Domestic transportation
- Accommodation
- Touring with guides and entrance fees

Flight and supplement information

Based on London Heathrow departures

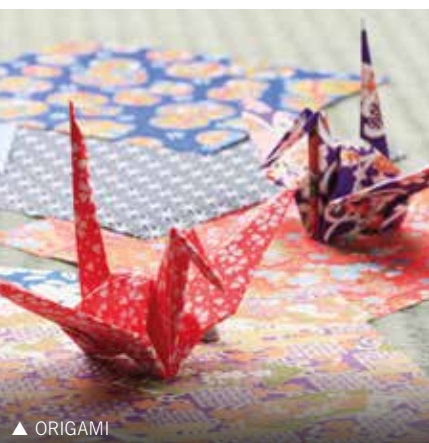
- Flight upgrades available on request
- Land only from £3,090 (Tokyo - Osaka)
- Single room from £790

ENJOY AS A PRIVATE TOUR

Choose to design your own bespoke itinerary

Looking for a different date? Would you like something a little more personal or to rearrange the touring to suit your needs?

Call us to arrange this itinerary as a private tour.



▲ ORIGAMI



▲ LAKE ASHI



▲ DAIBUTSU, NARA



▲ VIEW FROM TOKYO SKYTREE



TOUR HIGHLIGHTS

- Stroll through vibrant Tokyo
- Explore historic Nara
- Admire beautiful Mt Fuji
- Travel on the super-fast bullet train
- Discover Kyoto's temples

ITINERARY

DAYS 1-2: FLY TO TOKYO

Fly overnight to the vibrant, neon-bright metropolis of Tokyo, Japan's capital city. Depending on your time of arrival, the rest of the day is yours to start soaking up the local culture.

DAY 3: EXPLORE TOKYO

Tokyo is a city that is always moving forward – from the ever-changing skyline to the fashions and trends of the people who call it home. As modern as it may appear, behind the neon façade is a traditional soul that is easy to find amongst the old alleyways, temples and shrines of the Edo era. Today, you will experience both sides of the city, ascending the soaring Tokyo Skytree, the world's tallest tower, for panoramic views, before taking a wander through the old district of Asakusa. Stop to soak up the atmosphere at Sensoji, Tokyo's most famous and beloved temple and browse the stalls of Nakamise shopping street. You'll also visit the Imperial Palace Plaza, where you can admire the 'Nijubashi', the two bridges that form the grand entrance to the palace's inner sanctum. Later take a stroll through Hamarikyu Gardens. This evening, cruise the

waters of Tokyo Bay and enjoy dinner from the perfect vantage point to admire the supercharged lights of the city.

DAY 4: MOUNT FUJI

Travel by road from Tokyo to Mt Fuji, where you'll ascend 2,400 metres up Japan's most iconic sight to the 5th Station (weather permitting) for magnificent views of both Fuji's cone and the surrounding landscapes. (If the road to the 5th Station is closed, you will instead visit the Fuji Visitor Centre.) Transfer to the spa region of Hakone. Embark on a cruise on the spectacular Lake Ashi, keeping an eye out for the bright red of vermillion torii gates that nestle on the surrounding Alpinesque hills and in the shallows of the lake itself. Then fly high above the lake on the Komagatake Ropeway to the summit of Mt Komagatake where the views of Mt Fuji will be breathtaking but weather dependent of course!

DAY 5: BULLET TRAIN TO KYOTO

Transfer to Odawara Station to jump onboard the Hikari bullet train, and whizz your way to Kyoto. Capital for a millennium, Kyoto was also the heart of religion, philosophy, art and



▲ DOTONBORI STREET FOOD

cuisine, making it a treasure trove of history and culture. It is here that all of the best known cultural arts were born – the tea ceremony, Kabuki and Geisha to name a few. This afternoon, visit the magnificent Fushimi Inari Shrine. Follow the pathway through thousands of vermillion torii gates that leads through a complex of shrines spread over a peaceful, forested hillside.

DAY 6: EXPLORE KYOTO

This morning, visit one of Japan's most famous temples, Kinkakuji, also known as the 'Golden Pavilion'. Set amongst classical Japanese Zen gardens and on the edge of a reflecting pool, the temple's main hall is covered in gold leaf – a breathtaking sight no matter what season you visit in. Continue to Ryoanji, a Zen temple that is home to Japan's most famous Zen garden. You'll have some time to contemplate its mysteries for yourself. This afternoon, enjoy a taste of authentic Japanese culture, experiencing the elegant ritual of a tea ceremony and learning the traditional art of origami.

DAY 7: EXPLORE NARA & OSAKA

This morning, depart for Nara. Another former capital, Nara also has a huge cultural legacy, considered second only to Kyoto's. This picturesque, compact city is truly charming. Spend the morning discovering Todaiji Temple which houses the magnificent Daibutsu, a

CLASSIC TOUR

15-metre-tall bronze statue of Buddha. Here, you'll also be able to meet Nara's famous Sika Deer, believed to be the messengers of the Shinto gods. You'll also stroll around Isui-en, a prime example of a Meiji-era (1868-1912) garden. Continue to Osaka, where you'll have lunch and explore the Dotonbori district, Osaka's vibrant foodie and entertainment district – it is best known for its plethora of neon signs and street food stalls. Later, you can learn about the turbulent history of the magnificent Osaka Castle.

DAY 8: FLY OSAKA TO UK

Fly to the UK, arriving home the same or following day.

DISCOVER MORE...



HIROSHIMA & MIYAJIMA 2 NIGHTS FROM £990PP

Take a short extension to Hiroshima and Miyajima. Visit Hiroshima's A-Bomb Museum and the Peace Memorial Park and explore holy Miyajima Island where you can climb Mt Misen for panoramic views. See page 37. Additional flight costs may apply.

DEPARTURES

2018 DATES											
19 Mar - 26 Mar	£3,890	27 Mar - 03 Apr	£3,990	03 Apr - 10 Apr	£3,990	10 May - 17 May	£3,790	19 Sep - 26 Sep	£3,690	20 Oct - 27 Oct	£3,790
24 Mar - 31 Mar	£3,990	31 Mar - 07 Apr	£3,990	12 Apr - 19 Apr	£3,890	24 May - 31 May	£3,790	07 Oct - 14 Oct	£3,690	07 Nov - 14 Nov	£3,790
2019 DATES											
21 Mar - 28 Mar	£3,990	28 Mar - 04 Apr	£4,190	02 Apr - 09 Apr	£4,190	20 Apr - 27 Apr	£4,190	16 May - 23 May	£3,990		
24 Mar - 31 Mar	£4,090	31 Mar - 07 Apr	£4,190	08 Apr - 15 Apr	£4,190	05 May - 12 May	£3,990				

JEWELS OF JAPAN

Be captivated by the unique culture of Japan as you discover lively Tokyo, beautiful Mt Fuji and historic Kyoto. A visit to Hiroshima's Peace Memorial and the holy island of Miyajima complete this fascinating tour.

11 DAYS FROM

PER PERSON £4,790

FULLY INCLUSIVE FROM THE UK

MODERATE



▲ GEISHA

Price includes

All meals (9 breakfasts, 8 lunches & 9 dinners)

- International flights and current taxes
- Domestic transportation
- Accommodation
- Touring with guides and entrance fees

Flight and supplement information

Based on London Heathrow departures

- Flight upgrades available on request
- Land only from £4,190 (Tokyo - Osaka)
- Single room from £890

ENJOY AS A PRIVATE TOUR

Choose to design your own bespoke itinerary

Looking for a different date? Would you like something a little more personal or to rearrange the touring to suit your needs?

Call us to arrange this itinerary as a private tour.



▲ SOBA NOODLE MAKING



▲ HIROSHIMA PEACE MEMORIAL PARK

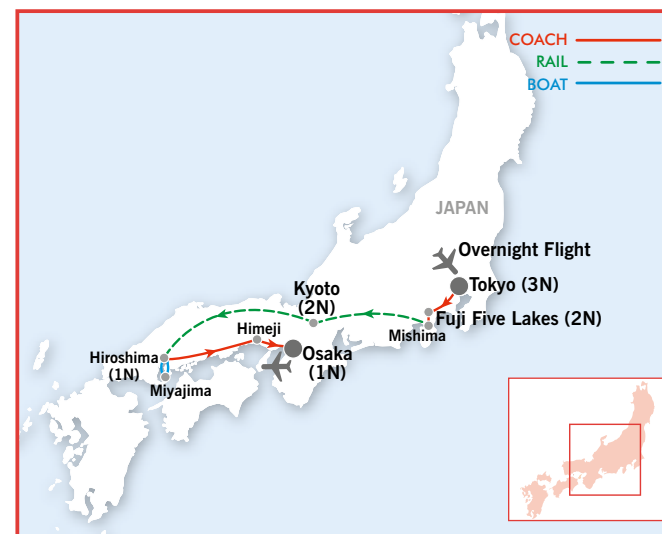


▲ OSHINO HAKKAI



▲ MT FUJI

CLASSIC TOUR



TOUR HIGHLIGHTS

- Feel the rush of Tokyo
- Admire beautiful Mount Fuji
- Puzzle over Ryoanji
- Be charmed by Kyoto
- Reflect in Hiroshima
- Explore relaxed Miyajima

ITINERARY

DAYS 1-2: FLY TO TOKYO

Fly overnight to the dazzling metropolis of Tokyo, Japan's capital city. Depending on your time of arrival, the rest of the day is yours to start soaking up the local culture.

DAY 3: DISCOVER TOKYO

Tokyo is the ultimate 24- hour city, but look behind its frantic, high-tech frontage and you'll find plenty of tranquil backstreets and old temples to explore. Today's city tour starts on the observation deck of the 634-metre Skytree, the world's tallest tower, before seeking out the tranquillity of the ancient Buddhist Sensoji Temple, Tokyo's oldest. Learn about Tokyo's historical heritage at the Edo-Tokyo Museum or Tokyo National Museum and explore Tokyo's Imperial Palace Plaza.

DAY 4: MEIJI SHRINE

Today, the tour begins with a relaxed morning wandering around the classical landscapes of the Hamarikyu Garden. Continue to the Meiji Shrine, the Shinto shrine dedicated to the deified spirits of Emperor Meiji

and his wife, Empress Shoken before driving past the famous Shibuya Crossing. The afternoon is free for you to explore the city as you wish. This evening, take a relaxed dinner cruise on Tokyo Bay for some excellent city vistas.

DAY 5: FUJI FIVE LAKES

Journey through the foothills of the iconic Mt Fuji to its base where we find the Fuji Five Lakes. The region is spectacular with the calm waters of the five lakes, formed by past volcanic eruptions, reflecting Mt Fuji's picture-perfect cone. Later, try your hand at making traditional Japanese soba noodles before tucking in to your creations. Continue to Oshino Hakkai, a scenic area of ponds full of crystal clear spring water created by Fuji's melting snow.

DAY 6: MOUNT FUJI

Ascend 2,000 metres up to Mt Fuji's 5th Station (weather permitting) where, with its perfectly conical peak looming overhead, you can take in the breathtaking views over the landscapes below. Returning to the beautiful Five Lakes region, explore Iyashi no Sato Historical



▲ MIYAJIMA

Village, a former farming village on the shores of Lake Saiko. Destroyed by a landslide in 1966, the remaining thatched-roofed houses of this old village have been transformed into an open-air museum and craft village.

DAY 7: BULLET TRAIN TO KYOTO

Transfer to Mishima station for the bullet train to Kyoto. Sit back and relax as you speed across the country. An enchanting city, Kyoto was capital for a thousand years; today it is the legacy of ancient Japan, full of tranquil temples, silk-clad geisha and sublime gardens. The geisha is both an intriguing and integral part of Japanese history – meet with either a maiko (apprentice geisha) or geisha and learn about their way of life and culture. Continue to Ryoanji Temple, a zen temple with an excellent example of a 'dry landscape' garden. End the day with a visit to Kinkakuji Temple, known as the 'Golden Pavilion', where there is an archetypal Muromachi period garden.

DAY 8: EXPLORE KYOTO

Today you will explore one of Kyoto's delightful temples – Kiyomizu Temple, a 17th-century Buddhist temple. In the afternoon, enjoy a traditional Japanese handicraft experience and enjoy Japanese tea at a restored wooden townhouse.

DAY 9: HIROSHIMA & MIYAJIMA

Today travel by bullet train to Hiroshima and Miyajima. Hiroshima needs no introduction. The city today is vibrant and modern with a forward-thinking, sunny outlook. Find a moment to reflect at the Peace Memorial Park and Museum. Hopping on a ferry, make the short trip to the holy island of Miyajima. Visit the Itsukushima Shrine, a UNESCO World Heritage Site and one of Japan's most recognisable, rising majestically out of the waters of the Seto Inland Sea. You will have time to explore the island on your own so you may wish to take the cable car to the top of Mt Misen to enjoy the panoramic views.

DAY 10: HIMEJI CASTLE

Travel to Himeji to visit its famous castle. The feudal era fort, one of the most impressive in Japan, towers over the city and is recognisable as the backdrop to several major films. Appreciate its turbulent past before strolling around Koko-en, the Edo-style gardens just across the castle moat. Afterwards, you will be transferred to Osaka for an overnight stay.

DAY 11: FLY OSAKA TO UK

Fly to the UK, arriving home the same or following day.

DEPARTURES

2018 DATES											
20 Mar - 30 Mar	£5,090	30 Mar - 09 Apr	£5,190	05 Apr - 15 Apr	£5,090	06 May - 16 May	£4,890	22 Sep - 02 Oct	£4,790	03 Nov - 13 Nov	£4,790
21 Mar - 31 Mar	£5,090	31 Mar - 10 Apr	£5,190	07 Apr - 17 Apr	£5,090	18 May - 28 May	£4,790	06 Oct - 16 Oct	£4,790	10 Nov - 20 Nov	£4,790
24 Mar - 03 Apr	£5,190	01 Apr - 11 Apr	£5,190	10 Apr - 20 Apr	£4,990	08 Sep - 18 Sep	£4,790	18 Oct - 28 Oct	£4,790		
27 Mar - 06 Apr	SOLD OUT	03 Apr - 13 Apr	£5,090	17 Apr - 27 Apr	£4,990	15 Sep - 25 Sep	£4,790	27 Oct - 06 Nov	£4,790		
2019 DATES											
17 Mar - 27 Mar	£5,290	29 Mar - 08 Apr	£5,490	04 Apr - 14 Apr	£5,490	17 Apr - 27 Apr	£5,490	20 May - 30 May	£5,190		
23 Mar - 02 Apr	£5,490	31 Mar - 10 Apr	£5,490	07 Apr - 17 Apr	£5,490	06 May - 16 May	£5,190				
26 Mar - 05 Apr	£5,490	02 Apr - 12 Apr	£5,490	11 Apr - 21 Apr	£5,490	13 May - 23 May	£5,190				

DISCOVER JAPAN

Journey across the Japanese Alps to the cultural centres of Takayama, Shirakawago and Kanazawa on this extensive tour of Japan. You will of course see modern Tokyo and beautiful Mt Fuji as well as historical Kyoto and Nara.

13 DAYS FROM

PER PERSON £5,290

FULLY INCLUSIVE FROM THE UK

MODERATE



▲ MT FUJI

Price includes

All meals (11 breakfasts, 10 lunches & 11 dinners)

- International flights and current taxes
- Domestic transportation
- Accommodation
- Touring with guides and entrance fees

Flight and supplement information

Based on London Heathrow departures

- Flight upgrades available on request
- Land only from £4,590 (Tokyo - Osaka)
- Single room from £990

ENJOY AS A PRIVATE TOUR

Choose to design your own bespoke itinerary

Looking for a different date? Would you like something a little more personal or to rearrange the touring to suit your needs?

Call us to arrange this itinerary as a private tour.



▲ SHIRAKAWAGO



▲ TRADITIONAL TEA CEREMONY



▲ DEER, NARA



▲ MATSUMOTO CASTLE



TOUR HIGHLIGHTS

- Feel the rush of Tokyo
- Admire great Mt Fuji
- Be charmed by Kyoto
- Visit Buddhist Koya-San
- See ancient Nara
- Explore the Japanese Alps

ITINERARY

DAYS 1-2: FLY TO TOKYO

Fly overnight to the dazzling metropolis of Tokyo, Japan's capital city. Depending on your time of arrival, the rest of the day is yours to start soaking up the local culture.

DAY 3: TOKYO CITY TOUR

Tokyo is the ultimate 24-hour city, but look behind its frantic, high-tech frontage and you'll find plenty of tranquil backstreets and old temples to explore. Today's city tour starts on the observation deck of the 634-metre Skytree, the world's tallest tower, before seeking out the tranquillity of the ancient Buddhist Sensoji Temple, Tokyo's oldest. Discover Tokyo's historical heritage at the Imperial Palace Plaza. Later, stroll through the classical landscapes of Hamarikyu Garden. This evening, take a relaxed dinner cruise on Tokyo Bay for some excellent city vistas.

DAY 4: MOUNT FUJI

Take the super-fast bullet train to Odawara. Enjoy a boat trip on Lake Ashi for spectacular

panoramas of this beautiful area before venturing up the Komagatake Ropeway for amazing views back over the lake and Mt Fuji. Travel to Fuji Visitor Centre. Heading up to the 5th Station (weather permitting), take in the breathtaking views over the Fuji Five Lakes below.

DAY 5: MATSUMOTO CASTLE

Transfer to Nagano before exploring the formidable 16th-century Matsumoto Castle and visiting a sake brewery. Travel on to Takayama, nestled high in the mountainous Hida region, which is also known as the Japanese Alps.

DAY 6: EXPLORE TAKAYAMA

Takayama has an air of old-world Japan, particularly around its wonderfully preserved old town. Browse the local handicrafts and fresh produce at the Miyagawa morning market, wander past some of the lovely traditional houses and visit several of the excellent local museums – Takayama Festival Floats Museum, Kusakabe Folk Museum and Takayama Jinya.

DEPARTURES

2018 DATES											
14 Mar - 26 Mar	£5,490	25 Mar - 06 Apr	£5,690	01 Apr - 13 Apr	£5,690	11 Apr - 23 Apr	£5,490	23 May - 04 Jun	£5,290	10 Oct - 22 Oct	£5,290
18 Mar - 30 Mar	£5,590	27 Mar - 08 Apr	£5,690	02 Apr - 14 Apr	£5,690	18 Apr - 30 Apr	£5,390	12 Sep - 24 Sep	£5,290	24 Oct - 05 Nov#	£5,290
21 Mar - 02 Apr	£5,690	28 Mar - 09 Apr	SOLD OUT	04 Apr - 16 Apr	£5,690	09 May - 21 May	£5,290	19 Sep - 01 Oct	£5,290	31 Oct - 12 Nov	£5,290
23 Mar - 04 Apr	£5,690	30 Mar - 11 Apr	£5,690	08 Apr - 20 Apr	£5,590	17 May - 29 May	£5,290	26 Sep - 08 Oct	£5,290	07 Nov - 19 Nov	£5,290
2019 DATES											
14 Mar - 26 Mar	£5,690	27 Mar - 08 Apr	£5,890	02 Apr - 14 Apr	£5,890	09 Apr - 21 Apr*	£5,990	12 May - 24 May	£5,490		
19 Mar - 31 Mar	£5,790	29 Mar - 10 Apr	£5,890	04 Apr - 16 Apr	£5,890	15 Apr - 27 Apr	£5,890	19 May - 31 May	£5,490		
24 Mar - 05 Apr	£5,890	31 Mar - 12 Apr	£5,890	06 Apr - 18 Apr	£5,890	05 May - 17 May	£5,490				

* Takayama Spring Festival Departure. Please contact us for more information

Kanazawa section of this departure is subject to change at short notice due to the Kanazawa Marathon

CLASSIC TOUR



▲ KENROKU-EN GARDEN

DAY 7: SHIRAKAWAGO & KANAZAWA

Get a glimpse of rural Japan at UNESCO-listed Shirakawago which is famous for its farmhouses built in the unique gassho-zukuri architectural style. Continue to Gokayama to experience washi paper making, then travel to Kanazawa and visit the Nomura Samurai House.

DAY 8: KENROKU-EN

Meander through the beautiful Kenrokuen Garden, one of the Three Great Gardens of Japan, before viewing the excellent art collection of the Kanazawa 21st Century Museum of Contemporary Art, which only exhibits works produced since 1980. Transfer to Kyoto, capital city of Japan until 1879.

DAY 9: EXPLORE KYOTO

Kyoto was capital for a thousand years; today it is the legacy of ancient Japan, full of tranquil temples, silk-clad geisha and sublime gardens. This morning visit the Ryoanji Temple complex which means 'temple of the peaceful dragon'. Next visit the famous Kinkakuji, a Zen temple known as the 'Golden Pavilion', the top two floors are completely covered in gold leaf. Head to a restored Japanese wooden townhouse for a traditional handicraft experience (such as origami) and to enjoy the rituals of a tea ceremony.

DAY 10: DISCOVER NARA

Visit Fushimi Inari Shrine, remarkable for its 10,000 torii (shrine gates). Later travel to Nara, a relaxed and charming town virtually untouched by the ravages of modernity. Home to many archetypal pieces of early art and architecture, you will stroll through Nara Park to Todaiji Temple, meeting the resident Sika deer en route, before exploring Isui-en Garden.

DAY 11: KOYA-SAN

The holy mountain of Koya-san is home to a cluster of over a hundred monasteries nestled in a valley enclosed by peaks said to resemble a lotus flower. Wander around Okunoin – a vast cemetery of 200,000 stupas. Full of atmosphere, enjoy the tranquillity and spectacular views as you discover Kongobuji Temple and the Garan Temple Complex. Continue onto Osaka.

DAY 12: TRAVEL TO OSAKA

Today explore Osaka Castle and take a cruise along the Yodogawa River. Stroll down Dotonbori, a restaurant mecca, where you can sample the local delicacies for lunch. The remainder of the day is free for you to explore this fascinating city.

DAY 13: FLY OSAKA TO UK

Fly to the UK, arriving home the same or following day.

TRAILS OF JAPAN

Prepare to immerse yourself in the wacky and wonderful in this fascinating land. Trek at the foot of Fuji, meet the Snow Monkeys of Yudanaka, cycle in Kyoto and stay at a traditional Buddhist lodge. And you'll see all the classic highlights too.

13 DAYS FROM

PER PERSON £5,490

INCLUSIVE FROM THE UK

ACTIVE

Price includes

Some meals (11 breakfasts & 3 dinners)

- International flights and current taxes
- Domestic transportation
- Accommodation
- Touring with guides and entrance fees

Flight and supplement information

Based on London Heathrow departures

- Flight upgrades available on request
- Land only from £4,790 (Tokyo - Osaka)
- Single room from £1,290

ENJOY AS A PRIVATE TOUR

Choose to design your own bespoke itinerary

Looking for a different date? Would you like something a little more personal or to rearrange the touring to suit your needs?

Call us to arrange this itinerary as a private tour.



▲ ARASHIYAMA



▲ SNOW MONKEY



▲ TAIKO CLASS



▲ SHIBUYA ROAD CROSSING



▲ SHIN-HOTAKA ROPEWAY

IMMERSE YOURSELF

hot springs, bathing and playing in and around the water. (B)

DAY 7: JAPANESE ALPS

Travel to Hotaka and ride up into the Japanese Alps on the Shin-Hotaka Ropeway, reaching an observation platform at 2,156 metres, which gives breathtaking views over the surrounding mountains (weather permitting). Drive to Takayama where you will be staying at a ryokan, a traditional Japanese inn with onsen facilities. Here you can relax and bathe in the natural hot spring pools and experience this most traditional pastime. This afternoon you will have time to explore Kamisannomachi Street and sample the street food on offer. This evening enjoy a Hida beef dinner. (B,D)

DAY 8: BULLET TRAIN TO KYOTO

Take a Limited Express train to Nagoya, where you'll change onto a Shinkansen bullet train to Kyoto. This afternoon, start discovering Kyoto's rich heritage with a visit to the enchanting Fushimi Inari Shrine with its pathway of vermillion torii gates before admiring the views over the city from Kiyomizu Temple. Stroll around the old neighbourhoods of Higashiyama and Gion, the geisha district, with a stop at Gion Corner, which showcases the seven professional performing arts. (B)

DAY 9: JAPANESE TEA CEREMONY

This morning take a half day tour of Kyoto by bicycle, starting at Kinkakuji, the 'Golden Pavilion', before contemplating Zen at Ryoanji, home to Japan's most famous classical garden. Continue to Arashiyama district where you will have some free time to explore the Bamboo Forest. Later in the afternoon, witness the rituals involved in the preparation and pouring of matcha tea in a traditional tea ceremony. (B)

DAY 10: KYOTO CULTURE & KOYA-SAN

Spend the morning discovering the craft of kimono creation and the complicated process of dressing in a traditional kimono at Nishijin Textile Centre, before a cultural experience that will see you learning the art of

origami. This afternoon, travel by road to Koya-san, where you will spend the night in a 13th-century temple sleeping on a traditional futon on a tatami mat floor. (B,D)

DAY 11: MORNING PRAYERS

Rise early to join the monks for their daily morning service – hearing the recitation and chanting is a magical experience. After breakfast, take a walking tour of Koya-san. One of Japan's holiest sites, this mountain top sanctuary is full of temples and pagodas to explore. Pay a visit to Kongobuji Temple and Okunoin cemetery before travelling to Osaka. (B)

DAY 12: HIMEJI CASTLE & SAKE BREWERY

Take a day tour to Himeji to visit the 17th-century Himeji Castle which is considered a prime example of Japanese feudal period architecture. Continue on to a sake brewery, where you can learn about the brewing process of this potent rice wine and enjoy some tasters. Return to Osaka and experience the bright and brash Dotonbori district. (B)

DAY 13: FLY OSAKA TO UK

Transfer to the airport and fly to the UK, arriving home the same or following day. (B)

SEE SUMO WRESTLING



On the May and September departures, there is an extra special addition to day 4: a Sumo Tournament. Many of Japan's most ancient traditions are preserved in the sport, and the rituals involved in its performance are as fascinating to watch as the wrestling itself.

Contact us for more information.



TOUR HIGHLIGHTS

- Visit the Robot Restaurant
- Take a Taiko drumming class
- Hike around Mt Fuji's base
- Meet the Snow Monkeys
- Stay at a traditional ryokan
- Explore sacred Koya-san
- Chant with Buddhist Monks
- Taste sake at a brewery

ITINERARY

DAYS 1-2: FLY TO TOKYO

Fly overnight to the dazzling metropolis of Tokyo, Japan's capital city. Depending on your time of arrival, the rest of the day is yours to start soaking up the local culture.

DAY 3: DISCOVER TOKYO

Today you will explore the two sides of Tokyo, the modern and the traditional. The city tour begins at the Tokyo Skytree, the world's tallest tower at 634 metres. From the top, on a clear day, you may catch a glimpse of Mt Fuji. Close by is Asakusa, at the heart of which is Sensoji, Tokyo's oldest temple, and the vibrant Nakamise shopping street. This afternoon drive by the famous Shibuya Crossing, before stopping at the tranquil Meiji Shrine and the vibrant district of Harajuku. Finally, it's time for a uniquely Tokyo experience – the Robot Restaurant. Here you'll experience what can only be described as a sci-fi cabaret – utterly surreal and only in Japan! Dinner is at leisure. (B)

DAY 4: JAPANESE DRUMMING

This morning, try your hand at traditional Japanese drumming

with a Taiko class, where you will learn the fundamental techniques of beating the 'wadaiko' with 'bachi'. Next, head to Akihabara, Tokyo's electronics district. Wander the neon-billboarded streets and visit a Maid Café, one of Tokyo's most popular types of themed establishments. In the afternoon, explore Tokyo's past at the Edo-Tokyo Museum or Tokyo National Museum. (B)

DAY 5: MOUNT FUJI

The perfectly symmetrical cone of mighty Mt Fuji is the iconic image of Japan. This morning, you will journey out of Tokyo into some of Japan's beautiful countryside at the foot of the mountain. Pick up a hiking trail and tramp through alpine forest, across meadows and around lakes at Fuji's base, pausing often to gaze on the peak towering above you. (B,D)

DAY 6: SNOW MONKEYS

Travel to Matsumoto and explore the magnificent Matsumoto Castle, also known as 'Crow Castle' due to its black exterior. Continue to Nagano stopping in Yudanaka to visit the Japanese Macaques, or Snow Monkeys, at the Jigokudani Yaen-Koen (Monkey Park). These creatures are unique in the fact that they make use of the area's natural

DEPARTURES

2018 DATES									
19 Mar - 31 Mar	£5,690	26 Mar - 07 Apr	£5,690	17 May - 29 May	£5,590	08 Oct - 20 Oct	£5,490		
22 Mar - 03 Apr	£5,690	29 Mar - 10 Apr	£5,690	10 Sep - 22 Sep	£5,590	15 Nov - 27 Nov	£5,490		
2019 DATES									
22 Mar - 03 Apr	£5,890	28 Mar - 09 Apr	£5,890	06 Apr - 18 Apr	£5,890	04 May - 16 May	£5,690		

WONDERS OF JAPAN

Embrace the unique and fascinating culture of Japan. Encompassing the essentials with natural wonders, imperial heritage and mystical surprises, this private tour incorporates a number of experiences that give your holiday a truly authentic edge.

10 DAYS FROM

PER PERSON £3,790

INCLUSIVE FROM THE UK

MODERATE

Price includes

- International flights and current taxes
- Transportation in Japan, excluding some city transfers
- 8 nights' accommodation
- Private touring and entrance fees as specified
- Local English-speaking guides
- Meals as listed

Flight and supplement information

Based on London Heathrow departures

- Flight upgrades available on request
- Land only from £3,090 (Tokyo - Osaka)
- Single room from £1,090



▲ TOKYO SKYLINE



▲ KINKAKUJI TEMPLE



▲ SNOW MONKEYS



▲ BUDDHIST ZENKOJI TEMPLE



▲ KYOTO

PRIVATE TOUR



TOUR HIGHLIGHTS

- Feel the rush of Tokyo
- Admire beautiful Mt Fuji
- See the cheeky Snow Monkeys
- Explore alpine Yudanaka
- Be charmed by Kyoto
- Travel by bullet train

ITINERARY

DAYS 1-2: FLY TO TOKYO

Fly overnight to the dazzling metropolis of Tokyo, Japan's capital city. Depending on your time of arrival, the rest of the day is yours to start soaking up the local culture. There is an optional tour to the Tokyo Skytree to enjoy panoramic views of the entire city before exploring Akihabara, the city's 'Electric Town', known for its hundreds of electronic shops selling a mind-boggling range of gadgets, gizmos, and devices that one way or another plug into the world of electricity as we know it.

DAY 3: TOKYO CITY TOUR

Tokyo is the ultimate 24-hour city, but look behind its frantic, high-tech frontage and you'll find plenty of tranquil backstreets and old temples to explore. Making use of the fantastic public transport, your guided city tour starts at the famous Shibuya Crossing. Continue to the Meiji Shrine, the Shinto shrine dedicated to the deified spirits of Emperor Meiji and his wife, Empress Shoken, followed by a walk around funky Harajuku. In the afternoon, you'll head to Asakusa district to experience a more traditional side of Tokyo. Afterwards, take a leisurely cruise on the Sumida River to

Hamarikyu Gardens to enjoy its delightful landscapes. (B,L)

DAY 4: MOUNT FUJI

Travel by coach to Hakone, the gateway to Japan's most iconic landmark - Mt Fuji. Drive to the 5th Station of Mt Fuji where, weather permitting, you can take in spectacular views. Next head to Hakone National Park and take a boat trip on Lake Ashi. From the water, the panoramas of the country's highest mountain and its surroundings are spectacular. Stroll around Hakone-en Garden before taking a cable car up Mt Komagatake for even more breathtaking views of the surrounding area. Return to Tokyo. (B,L)

DAY 5: TRAVEL TO YUDANAKA

With train tickets in hand, make your own way to the station and take the super-fast, super-efficient bullet train through stunning landscapes to the city of Nagano, which hosted the Winter Olympics in 1998. In Nagano, your touring is self-guided. You may like to visit the famous Buddhist Zenkoji Temple, founded in the 7th century and home to what is thought to be the first Buddhist statue ever brought to Japan. Afterwards, continue your journey into the northern peaks of the Japanese Alps to stay in the onsen resort town of Yudanaka. (B,D)

DAY 6: YUDANAKA ONSEN

Today is a day at leisure so you can use it to enjoy the sights around Yudanaka. One of the highlights is the Japanese Snow Monkeys soaking in the natural hot pools of the Jigokudani Yaen-Koen, which is easily reached from the town. Alternatively, you can visit a sake brewery or the art-loving town of Obuse. Enjoy dinner at your ryokan. (B,D)

DAY 7: BULLET TRAIN TO KYOTO

Get yourself back on the train to Nagano, before taking a thrilling but comfortable ride on the famous bullet train as you speed through the countryside to Kyoto. The enchanting city of Kyoto, nicknamed the 'City of Ten Thousand Shrines', was capital for more than a thousand years; today it is a well-preserved legacy of ancient Japan, full of tranquil temples, silk-clad geisha and sublime gardens. (B)

DAY 8: KYOTO'S HIDDEN TREASURES

Taking public transport, a local guide will lead you on an in-depth tour of this delightful city, which is home to 17 UNESCO World Heritage sites, over 1,600 Buddhist temples and 400 Shinto shrines. As imperial capital for such a long period of time, Kyoto perfectly illustrates the development of Japanese architectural styles. Visit the Kinkakuji Temple, the 'Golden Pavilion', before wandering through the famous Zen gardens at Ryoanji Temple. Continue to the

fascinating Nijo Castle, surrounded by exquisite gardens and renowned for its decorated sliding doors and 'chirping' nightingale floor. (B)

DAY 9: EXPLORE KYOTO & MORE

There is so much to see in Kyoto that you have today to explore independently. For those who might want to take their explorations farther afield, a rail pass will be provided enabling you to use the day to visit one of the nearby cities. Choose Nara, also a former capital full of wonderful heritage; the attractive hillside city of Kobe; Osaka, known for its excellent gastronomy; or the friendly and laidback Hiroshima. (B)

DAY 10: FLY OSAKA TO UK

Take the bullet train via Osaka to Osaka Kansai Airport and fly to the UK, arriving home the same or following day. (B)

STOPOVER IN...



DUBAI 2 NIGHTS FROM £230PP

Dubai is the ultimate urban destination full of futuristic architecture and cosmopolitan nightlife fronted by beautiful beaches. Dig a little deeper and you'll find a rich culture centred on the labyrinthine old city.

See pages 42-43. Additional flight costs may apply.

2018 - DEPARTING BETWEEN											
02 Jan - 31 Jan	£3,790	25 Mar - 12 Apr	REQUEST	11 May - 26 Jun	£4,090	18 Jul - 07 Aug	£4,390	19 Sep - 23 Sep	REQUEST	10 Dec - 24 Dec	£4,290
01 Feb - 28 Feb	£3,890	13 Apr - 28 Apr	£4,090	27 Jun - 11 Jul	£4,290	08 Aug - 16 Aug	REQUEST	24 Sep - 27 Oct	£4,090	25 Dec - 31 Dec	REQUEST
01 Mar - 24 Mar	£3,990	29 Apr - 10 May	REQUEST	12 Jul - 17 Jul	£4,490	17 Aug - 18 Sep	£4,290	28 Oct - 09 Dec	£4,390		
2019 - DEPARTING BETWEEN											
02 Jan - 31 Jan	£4,090	01 Mar - 24 Mar	£4,290	13 Apr - 28 Apr	£4,390	11 May - 26 Jun	£4,390				
01 Feb - 28 Feb	£4,190	25 Mar - 12 Apr	REQUEST	29 Apr - 10 May	REQUEST						

TAILORMADE JAPAN

If you want your own personal adventure, visiting exactly the places you want to go and including just the things you want to do then a tailormade holiday is for you. Whatever your interests, whoever you want to travel with, whatever you'd like to experience, we can help you create your own Japan.

The following pages showcase just some of the activities and experiences that we can include on your dream itinerary – it's completely flexible and designed especially for you.

WHY CHOOSE TAILORMADE?

1. PERSONAL SERVICE

The creation of your perfect itinerary is a combination of your ideas and desires, and our expertise. Your dedicated tailormade consultant will listen to what you are looking for, make recommendations and work with you to create a holiday that fulfils all your wants and needs. They are ready on the end of the line from enquiry to departure, so any questions you have, tweaks you want to make, things you want to talk through, just call.

2. EFFICIENT TRANSPORT

You can travel around Japan any way you like, be it by bullet train, plane or car, but we can always provide you with travelcards such as a Japan Railpass or a PASMO card so you can use its world-renowned, excellent public transport system to explore Japan with your private guide. This way you can truly experience the hustle and bustle of Tokyo and travel more independently across Japan.



3. LOCAL FLAVOURS

Japan is home to an abundance of gastronomical delights with a great selection of regional and seasonal varieties. Tasting the local food is a way of getting to the heart of a culture, so we suggest adding regional specialities to your itinerary, fresh sushi in Tokyo's fish market for example, but also leave you plenty of space to get out and discover the most flavourful offerings for yourself.

4. ACCOMMODATION CHOICES

Accommodation across Japan ranges from monastery dormitories to modern, five-star luxury. The choice of hotel style and standard is completely up to you. You can just give us the number of stars that you are comfortable with for us to recommend ones that suit your needs and requirements. Or if you wish you can choose traditional Japanese accommodation and sleep on a futon at a ryokan and bathe in an onsen.

5. DO SOMETHING DIFFERENT

Learning, seeing and experiencing are all part of travel – immersing yourself in a new culture and different way of life are one of its greatest perks. By tailormaking your trip you can take this a step farther and do something a bit different – go-karting as a super mario character, hiking the Japanese Alps or learning to make soba noodles are just a few of your many options.

6. PRIVATE GUIDING

There is no better way to really experience your destination than with your very own local expert. Not only will you learn more about the sights and culture but will get the inside knowledge on local life. And we only use the best guides, the ones who are both passionate and knowledgeable about their country and have a desire to share it.



FOR ALL THE FAMILY

Just because you are a family, it doesn't mean it is just beach holidays and camping on your horizon; there is a whole world of experiences out there for you all to share. Japan is the perfect place to encounter together – whether your kids are 5 or 15, it is easy to have a seriously fun adventure.

These are just a few of the many experiences that Wendy Wu Tours can offer for the family:



MANGA DRAWING CLASS, TOKYO

The art of manga has become a phenomenon; these whimsical comics, drawn in a style that was developed in Japan in the 19th century, have a huge following of devotees all over the world. Join a class to learn the tricks and techniques to drawing in this unique style as a family and so you can all create your very own anime story!



OSAKA AQUARIUM

One of the world's largest aquariums, Osaka's is located on Osaka Bay, in the city's huge shopping, dining and entertainment area. The tanks and displays within focus on the creatures of the Pacific, and feature such wonders as Antarctic penguins, Artic otters and even, in one ginormous tank, a whale shark and manta rays.



SNOW MONKEYS, YUDANAKA

The onsen town of Yudanaka sits in the foothills of the Japanese Alps. As well as offering the traditional ryokan experience, close by you can pay a visit to the delightful Japanese Macaque, or 'Snow Monkeys'. Head to Jigokudani Monkey Park, just half an hour away, to see them soaking and frolicking in their own hot spring pool.



BIKE TOUR, KYOTO

One of the best cities in Asia for cycling, there is no better way to explore Kyoto than by bike. Peddle your way through the city, seeing all of the big famous sights but also taking to the backstreets, traversing ancient canals, spotting old temples and shrines, and getting to see a local life that the tourist trail doesn't offer.

WHY NOT ENJOY THESE EXPERIENCES ON THE FOLLOWING ITINERARY:

DAYS 1-2: Depart UK and arrive in Tokyo

DAYS 3-5: Tokyo: Manga drawing class, Sensoji Temple, Skytree, Imperial Palace Plaza

DAYS 6-8: Yudanaka: Onsen, Snow Monkeys, explore the Japanese Alps

DAYS 9-11: Kyoto: Bike tour, temples, Fushimi Inari Shrine

DAYS 12-13: Osaka: Aquarium, Osaka Castle, Dotonburi

DAY 14: Depart Osaka for UK

Guide price: £20,000 per family

(based on a family of four in two twin share rooms)

FOR THE FOODIE

Food is a gateway into the culture of a nation, and Japan, where the focus is on the freshest, most delicious seasonal produce, spices and ingredients, this is particularly poignant. For the adventurous eater who'll munch on anything there are more than enough exciting delicacies to keep you taste buds excited for days.

Below are just a few of the many tasty experiences that Wendy Wu Tours can offer:



SOBA NOODLE MAKING, TOKYO

Japan is home to many a variety of noodle, but around Tokyo the buckwheat soba noodle is king. In this class, you will learn to create the dough out of buckwheat and wheat flour, to roll it out and to slice it with a special soba knife. After all the hard work is done, all that's left is to sit down to lunch and slurp up your creation.



OKONOMIYAKI, HIROSHIMA

Said to originate from here (Osaka disagrees), Hiroshima loves okonomiyaki so much there are 2,000 restaurants dedicated to it. Okonomi (what you like) yaki (grilled), is a savoury pancake stuffed with meat or seafood and vegetables. Sit in front of the huge hot plate, pick your ingredients and watch as it is prepared before your very eyes!



SAKE, KYOTO

Fushimi, a suburb of Kyoto, is well-known as a centre for sake production thanks to the area's natural water springs. There is an excellent museum housed in a beautiful, old wooden sake warehouse where you can taste sake and plum wine, and plenty of sake stores where you can taste more. Visit in Spring for the annual sake festival.



STREET FOOD TOUR, OSAKA

Osaka's motto is 'eat, drink and enjoy life' and who are we to argue? We can arrange a walking tour that allows you to experience all of the culinary wonders of this city, from the restaurant mecca of Dotonburi to those spots that the locals like to keep a secret. Walk and eat, eat and walk – the very best way to explore Japan's culinary capital.

WHY NOT ENJOY THESE EXPERIENCES ON THE FOLLOWING ITINERARY:

DAYS 1-2: Depart UK and arrive in Tokyo

DAYS 3-5: Tokyo: Soba noodle making, Skytree, Sensoji

DAYS 6-7: Hiroshima: Okonomiyaki, Peace Memorial Park

DAYS 8-11: Kyoto: Sake, temples, Gion

DAYS 12-13: Osaka: Street food tour, Osaka Bay

DAY 14: Depart Osaka for UK

Guide price: £5,890 per person

(based on two sharing a twin room)

FOR THE BIG KID

Japan is well-known for its geek culture – just head to the Tokyo districts of Harajuku, Ikebukuro and Akihabara to be bombarded by gaming, technology and anime. It's so easy to get more engrossed in this world, but if you are just interested in dabbling and having some fun, try these things for size.

Here are just a few of the many awesome experiences that Wendy Wu Tours can offer:



SUPER MARIO GO-KARTING, TOKYO

We all know and love Super Mario Kart but how about playing it for real? Take to the streets of Tokyo, with a guide, in go karts dressed as your favourite Mario characters (other character costumes may be available too) and start exploring. This is certainly the most unique and epic way to sightsee around the city!



ROBOT RESTAURANT, TOKYO

Located in Tokyo's entertainment district, Shinjuku, the Robot Restaurant has to be seen to be believed. In what can only be described as a robot cabaret, the show involves the female staff battling robots as well as samurais, pandas, dinosaurs and some dancing, all backed by bright lights, techno music and a huge dose of fun.



NATIONAL MUSEUM OF EMERGING SCIENCE & INNOVATION

Also known as Miraikan, the 'Hall of the Future', this museum is the technophiles ultimate dream. Full of tomorrow's technology, including a humanoid robot ASIMO and Otonaroid the android, there are lots of hands-on exhibits, a fantastic planetarium and technology covering seismology to geo-cosmology and everything inbetween.



GEISHA DRESS UP, KYOTO

The geisha is one of the most iconic images of Japan; her hair and make-up flawless, her conversation witty and her aptitude for music and dance perfect. Whilst we can't promise the latter two points, we can arrange to spend from one hour to a full day in full geisha regalia, which can include a photoshoot or a day of touring in the get up.

WHY NOT ENJOY THESE EXPERIENCES ON THE FOLLOWING ITINERARY:

DAYS 1-2: Depart UK and arrive in Tokyo

DAYS 3-9: Tokyo: Go-karting, National Museum of Emerging Science and Innovation, Harajuku, Ikebukuro, Akihabara, Toshiba Science Museum, Sony Explorascience Museum, Ghibli Museum

DAYS 10-12: Kyoto: Geisha dress up, temples, Gion

DAYS 13-14: Osaka: Osaka Bay, Dotonburi

DAY 15: Depart Osaka for UK

Guide price: £5,290 per person
(based on two sharing a twin room)

FOR THE ACTIVE

We all like to travel differently. Whilst some like to take it slow and easy, many like to be more active, making the most of the huge variety that Japan has to offer. Land-based or sea-based, many an interest can be indulged, you just have to choose which ones inspire you most.

These are just a few of the many active experiences that Wendy Wu Tours can offer:



HIKING IN THE JAPANESE ALPS

Whatever season you visit, the Japanese Alps are a spectacular place to be and, of course, the very best way to really explore is on foot. An area of mountains, rivers and forest, it is criss-crossed with excellent hiking trails – the Kamikochi Valley has spectacular gentle walks, whilst you can also go all out and attempt ascents on a couple of the areas peaks.



SHIMANAMI KAIDO

A 70-kilometre cycle route that follows the Nishiseto Expressway as it skips it's way, via a series of spectacular suspension bridges, across the Geiyo Islands of the Seto Inland Sea, the Shimanami Kaido is spectacular. Crossing areas of outstanding natural beauty, there are 14 bike hire terminals along the route, so you can do as much or little as you like.



SEA KAYAKING, MIYAJIMA

The holy island of Miyajima sits in the Seto Inland Sea, the lofty Mt Misen towering over the waters. See the island from a different angle with an energetic sea kayaking around it, making the most of the calm waters and beautiful views. You can get far closer to the iconic torii gate of the famous Itsukushima Shrine than those on land!



KENDO LESSON, KYOTO

A modern Japanese martial art, kendo is derived from the ancient practice of swordsmanship and uses bamboo swords (shinai) and plenty of body armour (bogu). A class in this exciting and physical martial art will teach you the basic moves and stances as well as some of the philosophy and values that are taught alongside them.

WHY NOT ENJOY THESE EXPERIENCES ON THE FOLLOWING ITINERARY:

DAYS 1-2: Depart UK and arrive in Tokyo

DAYS 3-5: Tokyo: Sensoji, Skytree, Imperial Palace Plaza

DAYS 6-8: Nagano: Hiking in the Japanese Alps, Snow Monkeys, onsen

DAYS 9-11: Hiroshima: Miyajima kayaking, Peace Memorial Park

DAYS 12-13: Shimanami Kaido

DAYS 14-17: Kyoto: Kendo class, temples, Gion

DAY 18: Depart Osaka for UK

Guide price: £7,390 per person
(based on two sharing a twin room)

A wide-angle, high-angle aerial photograph of Hong Kong at night. The city's dense skyline is illuminated with warm yellow and white lights, reflecting on the dark water of the harbor. The iconic Bank of China Tower stands out prominently in the center. The sky is a deep blue with scattered white clouds. The overall scene captures the vibrant energy and architectural grandeur of the city.

EXTENSIONS & STOPOVERS

Make your trip of a lifetime even more memorable by extending your tour, or adding a stopover en route. An extension will allow you to delve even deeper into the region or explore a whole other country, whilst a stopover is an easy way to add somewhere such as Hong Kong or Dubai to your travel itinerary.

TOKYO EXTENSION

4 DAYS

HIGHLIGHTS

- The tranquil Meiji Shrine
- Quirky Harajuku
- Vibrant Asakusa
- A sushi making experience



▲ TOKYO

Prices are from per person, based on low season*

CATEGORY	TWIN SHARE	SOLE TRAVELLER
Standard	£690	£1,180
Superior	£990	£1,740

Price includes:

- Three nights' accommodation
- Meals as listed
- Private touring as stated with an English-speaking guide
- Transportation as stated

DAY 1: FLY TO TOKYO

Travel to the dazzling metropolis of Tokyo, Japan's capital city. On arrival, you will make your way to your hotel independently and have the rest of the day at leisure.

DAY 2: EXPLORE TOKYO

Spend a full day exploring Tokyo with a guide. Making use of the city's excellent public transport system you'll visit the Meiji Shrine, a Shinto shrine nestled amongst a huge evergreen forest in the west of the city. Continue into the fast-paced, fashion-conscious districts of Harajuku and Omotesando, areas that are quintessential Tokyo. This afternoon, wander through Ginza, Tokyo's shopping, dining and entertainment district, before a stop at the Imperial Palace Plaza, from where you can see the ornate bridges that lead into the inner palace grounds. End the

day in the vibrant district of Asakusa, where you can see Tokyo's oldest temple. (B)

DAY 3: SUSHI MAKING EXPERIENCE

Meet your guide in hotel reception and head to Tsukiji Fish Market, the world's largest and biggest fish and seafood market. Stroll through the outer market to see the incredible range of fresh produce for wholesale and browse the shops. Next, learn to make your own sushi with incredibly fresh ingredients, which you can then enjoy for lunch. Your guide will take you back to the station, and you will return to your hotel independently. The rest of the day is at leisure. (B,L)

DAY 4: DEPART TOKYO

Your day is at leisure until the time comes to make your own way to the airport independently for your onward flight. (B)

KYOTO EXTENSION

4 DAYS

HIGHLIGHTS

- Beautiful Kinkakuji Temple
- Enchanting Nara
- Sushi class
- Sake tasting



▲ FUSHIMI INARI SHRINE

Prices are from per person, based on low season*

CATEGORY	TWIN SHARE	SOLE TRAVELLER
Standard	£990	£1,640
Superior	£1,120	£1,760
Deluxe	£1,250	£2,070

Price includes:

- Two nights' accommodation
- Meals as listed
- Private touring with an English-speaking guide
- Transportation as stated

DAY 1: ARRIVE KYOTO

Make your way to your hotel. The rest of the day is at leisure.

DAY 2: KYOTO

Today you explore the former imperial capital with a knowledgeable local guide. Visit Kinkakuji Temple (Golden Pavilion), which was originally built as a retirement villa for the Shogun. Continue to Nijo Castle, an ornamental castle which was built by the founder of the Edo Shogunate as his Kyoto residence. In the afternoon, walk the mile-long Nishiki covered food markets and visit a former sake brewery for a tour and sake tasting. At the end of the day learn how to make sushi as well as miso soup before enjoying the results for dinner. (B,L)

DAY 3: KYOTO – NARA

Transfer from your hotel to Nara by Kintetsu Train with a local guide. Nara was Japan's capital in the 8th century and many of the temples and shrines built at that time remain. Visit Todaiji temple, the world's largest wooden building and home to Japan's largest Buddha. Next stop is Nara's most celebrated shrine, Kasuga Taisha then take a wander through Nara Park. Return to Kyoto, stopping at Fushimi Inari Shrine en route. (B)

DAY 4: DEPART KYOTO

Your day is at leisure until the time comes to make your own way to the airport independently for your onward flight. (B)

NARA EXTENSION

2 DAYS

HIGHLIGHTS

- The eminent Todaiji
- Beautiful Nara Park
- Lovely Kasuga Shrine
- Meiji-era Isuien



▲ TODAIJI

Prices are from per person, based on low season*

CATEGORY	TWIN SHARE	SOLE TRAVELLER
Superior	£590	£940

Price includes:

- 1 night's accommodation
- Meals as stated
- Private touring with an English-speak guide
- Transportation as stated

DAY 1: TRAVEL FROM OSAKA TO NARA

Meet your guide in the hotel lobby and walk to the closest station. Take a train to Nara and begin your explorations! Start at Todaiji, a UNESCO-listed temple that is home to the Daibutsu, or Great Buddha, and Japan's largest statue. Take the time to wander through the beautiful grounds and meet the herds of friendly sika deer. Continue into the huge expanse of Nara Park, a designated 'Place of Scenic Beauty' and home to even more Sika deer who, in the Shinto religion, are

the messengers of the gods. Sit down to lunch in a local restaurant. This afternoon, visit Kasuga Taisha, Nara's most celebrate shrine, and the tranquil Meiji-era Japanese Garden Isui-en, which you'll have time to wander through and admire. Return to your hotel. (L)

DAY 2: FLY OSAKA TO UK

Spend the morning at leisure until your departure time. Transfer directly to Osaka Kansai Airport by the Airport Limousine Bus. (B)

HIROSHIMA & MIYAJIMA

3 DAYS

HIGHLIGHTS

- Peace Memorial Park and Museum
- Beautiful Shukkei-en Garden
- Holy Miyajima
- The heights of Mt Misen



▲ MIYAJIMA ISLAND

Prices are from per person, based on low season*

CATEGORY	TWIN SHARE	SOLE TRAVELLER
Standard	£990	£1,460
Superior	£1,060	£1,650
Deluxe	£1,120	£1,740

Price includes:

- Two nights' accommodation
- Meals as stated
- Private touring with an English-speak guide
- Transportation as stated

DAY 1: TRAVEL TO HIROSHIMA

From your hotel in Osaka, transfer to Shin Osaka station by car and board a bullet train to Hiroshima. Explore the city using public transport, starting at the poignant Peace Memorial Park. This leafy and peaceful expanse is full of beautiful memorials to those who died when, and after, the atomic bomb was dropped in 1945. Continue into the Peace Memorial Museum. Dine on local favourite okonomiyaki for lunch before visiting the historical Shukkei-en Garden. Proceed to your hotel and check in. (L)

walking tour of this peaceful island, wandering along the waterfront and along the shopping street to reach Itsukushima Shrine. The shrine is best known for its enormous vermilion torii gate, which stands in the waters of the Seto Inland Sea. This afternoon fly up to the heady heights of Mt Misen by cable car and admire the panoramic views from its summit. Return to Hiroshima and your hotel by ferry and local train. (B)

DAY 2: EXPLORE MIYAJIMA

Travel to the holy island of Miyajima by local train and ferry with your guide. Enjoy a

DAY 3: FLY OSAKA TO UK

Make your way to Hiroshima station independently and take the bullet train back to Shin Osaka. On arrival, change trains onto the JR express train to Osaka Kansai Airport. (B)

A CHINA EXPERIENCE

The quintessential experience, this introductory tour offers a glimpse of China's glorious past, fascinating present and bright future with visits to the exceptional and contrasting cities of Shanghai, Xian and Beijing.

9 DAYS FROM

PER PERSON
£1,790

✈️ EXTENSION TO YOUR JAPAN TOUR

➤ COMFORTABLE



▲ GREAT WALL OF CHINA

Price includes

🍴 Some meals (8 breakfasts, 6 lunches & 3 dinners)

- Visa fees for UK & EU passport holders worth £200
- Regional flights and current taxes*
- Domestic transportation
- Accommodation
- Touring with guides and entrance fees

**Price based on Wendy Wu Tours booking all international flights with Air China.*

Flight and supplement information

- Flight upgrades available on request
- Single room from £390
- Tipping paid locally RMB 500



▲ SHANGHAI

TOUR HIGHLIGHTS

- Admire Shanghai's bright lights
- Explore Zhujiajiao Watertown
- Face the Terracotta Army
- Walk on the Great Wall

ITINERARY

DAY 1: FLY TO SHANGHAI

Fly from Japan to the exuberant city of Shanghai. Depending on your time of arrival, the rest of the day is yours to start soaking up the local culture.

DAY 2: EXPLORE SHANGHAI

Shanghai is China's great metropolis and today you will explore it! Visit the traditional Yu Garden and Silk Museum before admiring the magnificent colonial architecture with a stroll along the Bund. This evening, view the city from the Huangpu River on a panoramic cruise. (B,L)

DAY 3: ZHUJIAJIAO WATER TOWN

Visit Zhujiajiao, one of Shanghai's sleepy water towns. Built on an old canal system, its waterways are lined with ancient buildings and crossed by stone bridges. Return to Shanghai to visit the Shanghai Museum, and explore People's Square. Dinner is traditional Shanghainese cuisine. (B,L,D)

DAY 4: XIAN MUSLIM QUARTER

Fly to Xian, the ancient former capital. Visit to the Little Wild Goose Pagoda and wander the atmospheric alleys of the Muslim Quarter. (B,L)

DAY 5: TERRACOTTA WARRIORS

Spend the morning viewing the enigmatic ranks of the Terracotta Warriors, the army of China's first Emperor, Qin Shi Huang, before seeing the Xian Art Ceramics and Laquer Exhibition. Later, stroll on the 14th century city walls that enclose Xian's old town. Tonight feast on traditional Shui Jiao dumplings before a performance of Tang Dynasty dancing. (B,L,D)

DAY 6: FLY TO BEIJING

Fly to Beijing, China's historical capital city. The rest of the day is free to start your explorations. (B)

DAY 7: IMPERIAL BEIJING

Heading to Beijing's symbolic heart, stroll across Tiananmen Square and into the sprawling magnificence of the Forbidden City. Later soak up the harmonious ambience of the Temple of Heaven, where you can watch, or participate in, a dance class. See a Chinese acrobatic show this evening. (B,L)

DAY 8: THE GREAT WALL

This morning, take a walk on China's most iconic structure – the Great Wall and visit a Jade Museum, where you will be able to buy a small handcrafted piece. Explore the idyllic landscapes of the Summer Palace before tucking into Beijing's best known delicacy – Peking duck. (B,L,D)

DAY 9: FLY BEIJING TO UK

Fly to the UK, arriving home the same or following day. (B)

CLASSIC SOUTH KOREA

South Korea is a country with both a finger on the pulse and an attachment to the beliefs and rituals of the past – a classic combination of Asia old and new. Discover buzzing, capital Seoul and delve into the past in historic Gyeongju.

5 DAYS FROM

PER PERSON
£1,890

✈️ EXTENSION TO YOUR JAPAN TOUR

➤ COMFORTABLE



▲ CITYSCAPE, SEOUL

Price includes

🍴 Some meals (4 breakfasts & 2 lunches)

- Regional flights and current taxes*
- Domestic transportation
- Accommodation
- Touring with guides and entrance fees

**Price based on Wendy Wu Tours booking all international flights with Asiana Airlines.*

Flight and supplement information

- Flight upgrades available on request
- Single room from £290
- Tipping paid locally USD150



▲ ANAPJI POND

TOUR HIGHLIGHTS

- See the magnificent Gyeongbok Palace
- Taste delicious Korean street food
- Explore historic Gyeongju
- Admire UNESCO Bulguksa Temple

ITINERARY

DAY 1: ARRIVE SEOUL

Fly from Japan to South Korea's capital, Seoul where you will be met by a driver and transferred to your hotel for check-in. This dynamic city may be well and truly on fast-forward for everything from fashion to technology, but it is still deeply rooted in tradition. You'll stumble on temples and palaces amongst the glittering skyscrapers and neon billboards. Seoul is also the place for foodies, the street snacks are second to none!

DAY 2: EXPLORE SEOUL

Take a full day to explore some of Seoul's many treasures with a local guide. Start at Gyeongbok Palace, the country's most famous and most beautiful royal palace, where, as well as exploring, you'll also see the Royal Guard Changing Ceremony. Next head to Gwangjang Market to taste some of Seoul's best street food. This evening you have the option of watching a traditional music and dance performance at Jeongdong Theatre (payable locally). (B)

DAY 3: HISTORIC GYEONGJU

Transfer to Seoul Station by private car. Travel in sleek style on the KTX bullet

train to Gyeongju. This city was the ancient capital of the Silla Kingdom, which ruled part of the Korean peninsula from the year 57BC to 935AD. Gyeongju is a living museum, home to a staggering amount of heritage sites, from tombs and temples to pagodas and palaces. On arrival, meet your guide and start discovering Gyeongju. Head to Mt Tohamsan, and the UNESCO World Heritage Bulguksa Temple and Seokguram Grotto. The temple is considered a masterpiece of Silla architecture whilst Seokguram Grotto, a hermitage, is home to some of the world's best Buddhist sculptures. There will also be time to enjoy the vistas around Bomun Lake. (B,L)

DAY 4: RETURN TO SEOUL

Meet your local guide to further explore Gyeongju. Start at the National Museum and marvel at its collection of Silla relics. Continue to Tumuli Park and its many royal tombs and on to the 7th-century Cheomseongdae Observatory, the oldest surviving observatory in East Asia. Finally, visit Anapji Pond. Return by bullet train to Seoul where the rest of the day is at leisure. (B,L)

DAY 5: DEPART SEOUL

Transfer to the airport for your return flight to the UK, arriving the following day. (B)

HONG KONG STOPOVER

Hong Kong boasts award-winning gastronomy, colourful nightlife and unbeatable city views from panoramic Victoria Peak or from the deck of a junk boat on the harbour. A sophisticated and lively metropolis, Hong Kong's mix of colonial influences, futuristic modernity and distinct Chinese traditions make it arguably the ultimate east-meets-west destination.

▲ HONG KONG SKYLINE

KOWLOON HOTELS



EATON, KOWLOON ★★★★★

In the heart of Kowloon, close to Temple Street and the Jade Market, the Eaton's rooms are coolly contemporary with dark woods and great views. Drinks by the rooftop pool or a free Tai Chi class are perfect to unwind; and there are seven bars and restaurants to choose from.



HARBOUR GRAND KOWLOON ★★★★★

For those who like comfort and functionality with their luxury, the Harbour Grand's spacious rooms with floor to ceiling windows, some with harbour views are perfect. The glass-walled pool, range of international restaurants and half hourly shuttles to Tsim Sha Tsui add to the appeal.



THE LANGHAM, KOWLOON ★★★★★

Located at the heart of the Tsim Sha Tsui shopping district, the Langham exudes a timeless elegance. Boasting a three Michelin-starred restaurant, a roof top pool and luxurious accommodation, the Langham's personalised service is one of many things that will make your stay here perfect.



KOWLOON SHANGRI-LA ★★★★★

Overlooking Victoria Harbour, it is not only the Shangri-La's excellent location that makes it an excellent choice, but also its modern style and outstanding service. Rooms offer city or harbour views from their huge windows and there are eight restaurants, a health club and pool to enjoy.

HONG KONG ISLAND HOTELS



DORSETT, WAN CHAI ★★★★★

Perfectly located next to the Happy Valley Racecourse, the Dorsett offers bright and airy rooms decorated in a series of elegant themes. Just 10 minutes stroll from Causeway Bay MTR station, a free shuttle serves the most popular spots close by.



ISLAND SHANGRI-LA ★★★★★

This beautiful hotel towers 56-storeys above the Central district of Hong Kong Island. Described as an urban sanctuary, rooms are elegant with Asian accents. It has eight restaurants, one of which has two Michelin stars and facilities including a spa, pool and gym.

HONG KONG GLIMPSES

2 NIGHTS FROM PER PERSON £310

This fleeting visit to Hong Kong features all of the highlights of this vibrant city, including panoramic views from Victoria Peak and the quaint Aberdeen fishing village. Also take some time to relax and explore the city's foodie scene.

DAY 1: ARRIVE HONG KONG

Arrive in Hong Kong and transfer from the airport to your hotel, the famous skyline growing bigger and more impressive as you approach the city proper. The rest of the day is at leisure to begin your explorations.

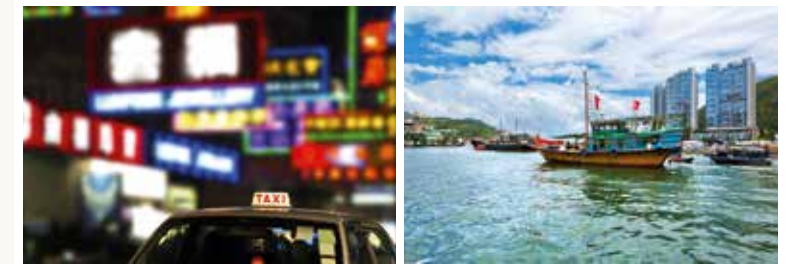
DAY 2: HONG KONG TOUR

Fill up on a hearty breakfast before hopping on a coach to see the sights of the city. Spending half a day touring Hong Kong Island you will visit Stanley Market, head up Victoria Peak for fantastic

views and see a quainter side of Hong Kong life at Aberdeen fishing village. Here there is an option to take a sampan ride (at your own expense) to get a closer look at the numerous fishing vessels. The rest of the day is free to continue your own explorations. (B)

DAY 3: DEPART HONG KONG

Enjoy a leisurely breakfast before checking out of the hotel. The rest of the day is free to spend as you wish before transferring back to Hong Kong airport. (B)



Prices per person from

HOTEL	TWIN SHARE	SINGLE SUPPLEMENT
4★ Dorsett, Wan Chai	£310	£170
4★ plus Harbour Grand Kowloon	£390	£220
5★ Kowloon Shangri-La	£590	£350

Flight supplements may apply

Price includes

- 2 nights accommodation
- Airport transfers
- Touring as specified
- Local English speaking guide
- Entrance fees
- Meals as stated

HONG KONG IN FOCUS

3 NIGHTS FROM PER PERSON £510

Designed to show you two aspects of life in the city, tour the best bits of Hong Kong Island before discovering the natural beauty of Lantau, Hong Kong's largest island, with time to spend exploring as you wish.

DAY 1: ARRIVE HONG KONG

Arrive in Hong Kong and transfer from the airport to your hotel, the famous skyline growing bigger and more impressive as you approach the city proper. The rest of the day is at leisure to begin your explorations.

DAY 2: HONG KONG TOUR

Spend half a day touring Hong Kong Island by coach visiting Stanley Market, heading up Victoria Peak for fantastic views and seeing a quainter side of Hong Kong life at Aberdeen fishing village. Here there is an option to take a sampan ride. The rest of the

day is free to continue your own explorations. (B)

DAY 3: LANTAU ISLAND

A full day coach tour will see you taking in the sights of Lantau Island. Visit Cheung Sha Beach, Tai O Fishing Village, Po Lin Monastery and its serene giant Buddha. Po Lin serves delicious vegetarian food which you will enjoy for lunch before soaring over the island on the Ngong Ping Cable Car. (B,L)

DAY 4: DEPART HONG KONG

The day is free to spend as you wish before transferring back to Hong Kong airport. (B)



Prices per person from

HOTEL	TWIN SHARE	SINGLE SUPPLEMENT
4★ Dorsett, Wan Chai	£510	£250
4★ plus Harbour Grand Kowloon	£680	£340
5★ Kowloon Shangri-La	£910	£520

Flight supplements may apply

Price includes

- 3 nights accommodation
- Airport transfers
- Touring as specified
- Local English speaking guide
- Entrance fees
- Meals as stated

DUBAI STOPOVER

Dubai is the ultimate urban destination – a city full of cutting edge architecture, epic shopping malls, the finest of the world's luxury hotels and a cosmopolitan nightlife, all topped off with excellent beaches. As modern and extravagant as Dubai might be there is still plenty of rich and traditional culture to be found, particularly amongst the labyrinthine alleys of the old city.



▲ BURJ AL ARAB

DUBAI HOTELS



MARCO POLO HOTEL
★★★★

Close to the airport and in easy reach of shopping malls and public transport, the Marco Polo is also located for those who want to explore the more historical side of the city. There is a pool to relax around and award-winning restaurants to dine at.



HILTON DUBAI, THE WALK
★★★★

On 'The Walk' and close to the new 'The Beach' mall, this Hilton offer modern and tasteful décor. With easy access to the sand, many rooms have views of the beachfront and facilities including kitchenette and seating area.



JA OCEAN VIEW HOTEL
★★★★

Across the road from Jumeirah Beach on lively 'The Walk', the JA Ocean View is comfortable and modern. All rooms have sea views from their spacious balconies, and there are seven restaurants, and a beautiful infinity pool.



AMWAJ ROTANA, JUMEIRAH BEACH
★★★★+

The Amwaj Rotana boasts the largest guest rooms of the Jumeirah Beach Residence, each tastefully furnished and with a spacious balcony. This is the hotel for those looking for fun-filled entertainment in the evenings.



MÖVENPICK HOTEL JUMEIRAH BEACH
★★★★★

Located on 'The Walk', the Mövenpick is well situated for shopping and entertainment. A chic and modern property, contemporary rooms have balconies with partial or full views of the Gulf, and there is an outdoor pool and wellness centre.



SHERATON JUMEIRAH BEACH RESORT
★★★★★

Sat on a private beach in Dubai Marina, the Sheraton has excellent facilities, including a spa and water sports. The combination of the contemporary hotel and its expansive landscape gardens creates a modern paradise.

ESSENTIAL DUBAI

2 NIGHTS FROM PER PERSON **£230**

See a whole other side of Dubai on a stopover that includes a half day city tour that provides an insight into Dubai's rich history. Admire the incredible architecture – ultra-modern and deeply traditional, and browse through the wares of Dubai's old souks, as atmospheric today as they have been for centuries.

DAY 1: ARRIVE DUBAI

On arrival into Dubai Airport, be met by your driver and get taken by car to your hotel. The rest of the day is at leisure.

DAY 2: EXPLORE DUBAI

Enjoy a half day tour of the city, which takes in both traditional and modern Dubai. Make a stop for photos at the Burj Al Arab and Jumeirah Mosque, pass the Zabeel Palace and explore the Al Fahidi Cultural Neighbourhood and art district and the Dubai

Museum. It's then time to take a step back in time, and cross Dubai Creek by traditional abra, or water taxi, to wander through the vibrant Spice and Gold souks in the old part of the city – the wares here have been the same for centuries. The rest of the day is at leisure. (B)

DAY 3: DEPART DUBAI

After checkout, transfer back to the airport for your onward flight to the UK. (B)



Prices per person from

HOTEL	TWIN SHARE	SINGLE SUPPLEMENT
4★ The Marco Polo	£230	£140
4+★ Amwaj Rotana	£320	£240
5★ The Sheraton Jumeirah Beach Resort	£350	£250

Flight supplements may apply

Price includes

- 2 nights accommodation
- Airport transfers
- Touring as specified
- Local English speak guide
- Entrance fees
- Breakfast daily

DUBAI & THE DESERT

3 NIGHTS FROM PER PERSON **£390**

Dubai sits within the Arabian Desert, and with this stopover you can experience it on an adventurous and magical evening tour. Explore the sand dunes and dine on delicious Arabian fare under the stars. You'll also experience the city itself on a half day city tour.

DAY 1: ARRIVE DUBAI

On arrival into Dubai Airport, be met by your driver and be taken by car to your hotel. The rest of the day is at leisure.

DAY 2: EXPLORE DUBAI

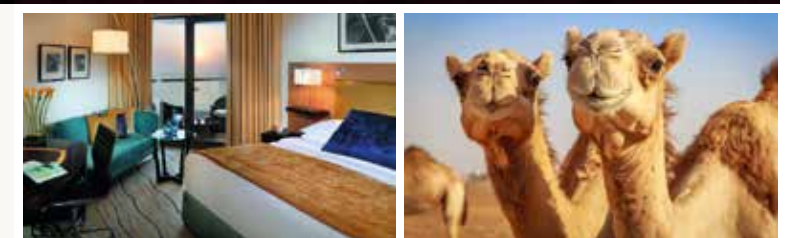
Enjoy a half day tour of the city, which takes in both traditional and modern Dubai. Stop for photos at the Burj Al Arab and Jumeirah Mosque, and explore the Al Fahidi Cultural Neighbourhood and art district and the Dubai Museum. Cross Dubai Creek by traditional abra and wander through the vibrant Spice and Gold souks. The rest of the day is at leisure. (B)

DAY 3: DESERT ADVENTURE

The day is at leisure before you head out into the desert for a magical evening. View falcons at an amphitheatre before an exciting drive into the sand dunes, with a stop in the perfect spot for sunset. Stop at a Bedouin-style camp for a delicious Arabic-style buffet within unlimited selected beverages. You can also try your hand at camel riding and sandboarding, included in the price, whilst here. (B,D)

DAY 4: DEPART DUBAI

After checkout, transfer back to the airport for your onward flight to the UK. (B)



Prices per person from

HOTEL	TWIN SHARE	SINGLE SUPPLEMENT
4★ The Marco Polo	£390	£180
4★ Hilton Dubai The Walk	£540	£360
5★ Movenpick Hotel Jumeirah Beach	£570	£390

Flight supplements may apply

Price includes

- 3 nights accommodation
- Airport transfers
- Touring as specified
- Local English speak guide
- Entrance fees
- Breakfast daily

HOTELS

Your accommodation is selected for convenience of location, comfort or character and can range from a business hotel in one city to more traditional accommodation in a smaller town.



TOKYO

Sunshine City Prince Hotel
Sunshine City alpa, 3-1-5
Higashi-ikebukuro, Tokyo

Shiba Park
1-5-10 Shiba Koen,
Minato 105-0011, Tokyo

KYOTO

Karasuma Kyoto Hotel
Karasum Shijo Shimagyo-ku,
Kyoto 600-8412

Monterey Kyoto
604 Manjuyacho,
Karasumadori 3-jo Kudaru,
Nakagyo-ku, Kyoto 6604-8161

FUJI FIVE LAKES

Hotel Mifujien
207 Asagawa,
Minamitsuru-gun,
Fujikawaguchiko-machi 401-0303

TAKAYAMA

Ryu Resort Takayama
892-11 Arabuchi Shokawacho,
Takayama 501-5413

KANAZAWA

Hotel Kanazawa
920-0849 Ishikawa,
Kanazawa

HIROSHIMA

Hotel Granvia Hiroshima
1-5 Matsubara-cho,
Minami-ku,
Hiroshima 732-0822

OSAKA

Monterey Osaka
3-3-45 Umeda, Kita-ku, Osaka 530-0001

Hotels on our group tours are generally rated as local three to four star standard but please note that there is no international classification system for hotels and differences in facilities and quality may exist between the UK and Japan.

Hotels are subject to change and will be confirmed with your final documents.

YOUR QUESTIONS ANSWERED

A selection of our most frequently asked questions.

BEFORE YOU TRAVEL



Q. How soon after making our booking will we receive confirmation?
A. Once we have received your deposit we will send your confirmation documents.

Q. Do you send us information about the destinations we will visit?
A. It is essential that you read the relevant tour dossier before booking, which you can find on wendywutours.co.uk, or we can arrange for one to be sent to you. If there are any particular challenges such as the length of time spent on your feet, journey times or accommodation standards, they will be explained in these concise trip notes. Two weeks before you travel, you will receive a detailed day-by-day itinerary, a travel guide and phrasebook as well as a suggested packing list with your final documents.

Q. Will I know which hotels I will be staying in before I go?
A. Hotel details will be sent with your final documents. Note that these may be subject to change. Hotels generally range from 3-4 stars. In more remote areas, accommodation may be of a lower standard and may not have all western amenities. Rest assured that all hotels used by Wendy Wu Tours are regularly inspected by our staff and our partners to ensure that standards meet your needs. See page 44 for examples of hotels we usually use. If you require an early

check-in or late check-out on your arrival or departure day, please contact us.

Q. Do I need a visa?
A. Visas are currently not required for Japan for holders of UK British Citizen passports.

Q. Do I need travel insurance?
A. Your protection and safety are our main priority. That's why having adequate travel insurance is a condition of booking with us for all the destinations you plan to travel to. Contact us for details of our recommended policies.

Q. What vaccinations do I need?
A. We recommend you see your doctor at least six weeks prior to travel for advice and to allow time for any necessary vaccinations. Please remember to take your itinerary with you. This information is given as a guide only and no responsibility can be taken for any errors or omissions.

Recommended	
Japan	No recommended vaccinations

This information is given as a guide only and no responsibility can be taken for any errors or omissions. Source: www.fitfortravel.nhs.uk. Always seek your doctor's advice.



Q. How fit do I need to be?

A. Our Group Tours are graded on each page to reflect fitness requirements and other travelling aspects of each tour. The specific reasons for a particular grading are clearly described in the Tour Dossiers which you can find on our website. Please contact us if you require any advice.

Our range of Private Tours are more flexible and may better cater for individual needs. Ask us for more details.

MODERATE
Tours require a higher level of fitness and may include longer periods of sightseeing. Easy walking, moderate altitude and greater cultural immersion may feature.

ACTIVE
Tours require a good level of fitness, as they are physically more demanding. They may involve hiking, cycling and travel to areas where facilities are more traditional in nature.

Please contact us if you require any advice.

Q. What size are your tour groups?

A. The group size varies depending on the tour, but is usually between 8 and 29 passengers. You may meet other tour groups travelling concurrently. Where available, on our group tours we operate a seat-and-a-half policy, allowing you to travel in comfort. On Trails of Japan the maximum group size is 24 passengers.

Q. Do you run guaranteed departures?

A. Group tours are guaranteed to run subject to a minimum of 8 passengers, and a National Escort will accompany each group of 10 or more. We will endeavour to run groups of a smaller size if viable to do so.

Q. As a single traveller, will I have to pay a single supplement?

A. No. On our Japan group tours we offer the option to share with a tour member of the same gender so there are no additional charges for travelling alone. You will be introduced to your share partner on arrival. To arrange a guaranteed private room, our single room option is available for an extra cost.

Q. What is the maximum luggage allowance on your tours?

A. Your main suitcase or backpack must not exceed 20kg and your hand luggage must not exceed 5kg.

Q. What currency should I take?

A. We recommend you take the local currency Yen and a credit/debit card. We do not recommend travellers cheques. Please ensure you have sufficient funds to pay for personal expenses such as drinks, snacks, souvenirs, and optional extras. Tipping is not part of the Japanese culture and is not expected, but if you would like to show your appreciation, you can do so in the local currency.

Q. Can you arrange airport lounges, parking & hotels?

A. Yes – we are always looking for ways to make your holiday that little bit more comfortable and convenient for you. Contact us for details.

Q. When is the best time to visit Japan?

A. Japan is a year-round destination. While spring and autumn are the most popular months to visit, many people enjoy tours at other times of the year when there are fewer tourists. See pages 6-7. Many people travel to Japan in cherry blossom season. Please bear in mind that seeing the cherry blossoms cannot be guaranteed as the season can vary from year to year. Very roughly the season for Tokyo and Kyoto is for the last week of March and first two weeks of April – farther south it begins earlier, farther north it's a bit later.

**Q. When are Japanese public holidays?**

A. Japan's 'Golden Week' public holidays fall annually at the end of April/beginning of May. Celebrations last for several days and during this time some businesses will be closed. Tour attractions will be open, but may be crowded.

WHILE ON TOUR

Q. What sort of vehicles do you use?

Road: Coaches with air conditioning are used on our group tours for city sightseeing, short excursions to the countryside and longer transfers where necessary. On our private tours, we use air-conditioned vehicles suitable for the size of the party.

Rail: Bullet trains and high speed trains are used on some tours. There is limited space to store luggage but alternative options are available, such as a luggage transfer service (at your own expense). While our guides may be there to assist, you will need to load and unload your own luggage on and off the trains. Seats onboard are comfortable, and carriages have western-style facilities.

River: Ships or boats are used on tours which have a cruising element. To undertake these excursions, you will need to be capable of boarding and disembarking from these boats, sometimes without assistance and/or handrails.

Public Transport: In big cities such as Tokyo, it may be necessary to make use of the excellent public transport systems during your sightseeing excursions. As well as being quicker and more convenient, it gives you a far more local experience. Escorted travel on public transport is mainly used on private tours.

Q. Is there a dress code on your tours?

A. Our dress code is very relaxed; however, please note that clothing covering the arms and legs is more appropriate when visiting religious buildings.

Q. Are meals included?

A. All meals (excluding beverages) are included in our Classic Tours except where stated. Meals included in Trails of Japan and Wonders of Japan, are stated in the brochure and include several free evenings, offering flexibility for those who wish to explore local restaurants. Meals on our Classic group tours start with dinner on the normal day of arrival and finish with breakfast on the normal day of departure. Any additional meals will be at your own expense and no refund will be made for any meals missed. You will sample a range of local cuisine with occasional western meals, and meals are usually taken at local restaurants.

**Q. Is tap water safe to drink?**

A. The tap water across Japan is safe to drink, though you may prefer bottled water as you may not appreciate the taste.

Q. Are there any optional excursions?

A. From time to time your National Escort or local guide may suggest optional sightseeing in addition to the standard sightseeing planned, depending on local conditions. Such options are at an additional cost, with prices usually ranging from £10 to £30 per person. This is paid in cash (local currency) to the guide on the day of the optional excursion – just ask your guide if you need to visit a cash machine before touring for that day commences.

Q. Are there shopping opportunities on your tours?

A. Japan has an array of shopping opportunities for those who love to seek out a bargain. We encourage all passengers to enjoy their local shopping expeditions but to take care and be wise when purchasing.

Q. Can special requests be arranged?

A. If you have any special requests such as dietary requirements, or if you wish to celebrate an event, please notify us at the time of booking and we will do everything possible to ensure your requests are met. Please note that special requests cannot be guaranteed.

Q. What is the flying time to Japan?

A. Approx. 11.5 hours (if flying direct).

Q. Do you allow children on your tours?

A. We allow children 12 years and over on our group tours. Alternatively, our Private Tours (see our website) offer greater flexibility whilst on tour and are suitable for any age group.

Q. Will I be travelling with passengers from other countries?

A. Our passengers generally enjoy the mixture of British and Australian clients on tour. Occasionally we are joined by English speaking passengers from other countries.

Q. What is the average age on your group tours?

A. The average age range is 40-65. Younger and older passengers travel with us too.

Q. What hours of the day do your tours operate?

A. They generally start about 8am and end shortly after your evening meal. Occasionally earlier starts are required to meet touring requirements.

WHILE ON TOUR

**Q. Is Tipping Compulsory?**

A. Tipping is not part of the culture in Japan and therefore is not required during our tours in Japan.

WeCare –
Health & Safety

The enjoyment of your holiday is our highest priority. Wendy Wu Tours is a fully insured and bonded tour operator with comprehensive public liability cover. Working closely with an independent health and safety organisation, we are proactive in our approach by ensuring that hotels used on our group tours regularly undergo comprehensive fire safety, security and hygiene audits. In the unlikely event of a problem or emergency on tour, Wendy Wu Tours has a Crisis Management process in place to support all of our customers. We also have a dedicated 24 hour emergency support number.

WENDY WU TOURS BOOKING CONDITIONS

The following booking conditions form the basis of your contract with Wendy Wu Tours Ltd, Ground Floor, Cottons Centre, Cottons Lane, 47-49 Tooley St, London SE1 2QG, company number 05107061. Please read them carefully as they set out our respective rights and obligations. By asking us to confirm your booking, you confirm that you have had the opportunity to read and have read these booking conditions, the brochure and tour dossier and agree to be bound by them.

These booking conditions only apply to holiday arrangements which you book with us in the UK and which we agree to make, provide or perform (as applicable) as part of our contract with you. All references in these booking conditions to “holiday”, “booking”, “contract”, “package”, “tour” or “arrangements” mean such holiday arrangements unless otherwise stated.

For tailor-made holidays, please refer to our Asia Inspirations brochure and terms and conditions or visit www.asiainspirations.co.uk.

In these booking conditions, “you” and “your” means all persons named on the booking (including anyone who is added or substituted at a later date) or any of them as the context requires. “We”, “us” and “our” means Wendy Wu Tours Limited.

1. Your Holiday Contract

The first named person on the booking (“lead name”) must be authorised to make a booking on the basis of these booking conditions by all persons named on the booking and by their parent or guardian for all party members who are under 18 when the booking is made. By making a booking the lead name confirms that he/she is so authorised. The lead name is responsible for making all payments due to us and to indemnify us for the liability of all party members. The lead name must be at least 18 when the booking is made.

After we receive your booking request and all appropriate payments (see clause 4 “Payment” below), if the arrangements you wish to book are available, we will issue a confirmation invoice. A binding agreement will come into existence between us when we dispatch this invoice to the “lead name” or your Travel Agent. We both agree that English Law (and no other) will apply to your contract and to any dispute, claim or other matter of any description which arises between us (“claim”) (except as set out below). We both also agree that any claim (and whether or not involving any personal injury) must be dealt with under the ABTA arbitration scheme (if the scheme is available for the claim in question and you wish to use it – see clause 14) or by the Courts of England and Wales only unless, in the case of Court proceedings, you live in Scotland or Northern Ireland. In this case, proceedings can either be brought in the Courts of your home country or those of England and Wales. If proceedings are brought in Scotland or Northern Ireland, you may choose to have your contract and claim governed by the law of Scotland/Northern Ireland as applicable (but if you do not so choose, English law will apply).

Your invoice will be sent to your travel agent or the lead name on the booking if you have booked direct with us. Please check this invoice carefully as soon as you receive it. Contact us immediately if any information which appears on the confirmation or any other document appears to be incorrect or incomplete as it may not be possible to make changes later. We regret we cannot accept any liability if we are not notified of any inaccuracies (for which we are responsible) in any document within ten days of our sending it out (five days for tickets). We will do our best to rectify any mistake notified to us outside these time limits but you must meet any costs involved in doing so.

If you wish to change or cancel any arrangements later you may have to pay an amendment or cancellation charge (See Clause 8).

2. Your financial protection

We hold an Air Travel Organiser’s Licence issued by the Civil Aviation Authority (ATOL number 6639). When you buy an ATOL protected flight or flight inclusive holiday* from us, you will receive an ATOL Certificate. This lists the flight, accommodation, car hire and/or other services that are financially protected, where you can get information on what this means for you, and who to contact if things go wrong. We, or the suppliers identified on your ATOL Certificate, will provide you with the services listed on the ATOL Certificate (or a suitable alternative). In some cases, where neither we nor the supplier are able to do so for reasons of insolvency, an alternative ATOL holder may provide you with services you have bought or a suitable alternative (at no extra cost to you). You agree to accept that in those circumstances the alternative ATOL holder will perform those obligations and you agree to pay any money outstanding to be paid by you under your contract to that alternative ATOL holder. However, you also agree that in some cases it will not be possible to appoint an alternative ATOL holder, in which case you will be entitled to make a claim under the ATOL scheme (or your credit card issuer where applicable).

*The flights and flight-inclusive holidays we arrange are ATOL protected providing they are made available in the UK. For further information visit the ATOL website at www.atol.org.uk.

We are a member of ABTA (ABTA number W7994). If your holiday does not include flights, ABTA will financially protect your holiday by ensuring you receive a refund or, if your arrangements include return travel to the UK (other than flights) you are returned to the UK in the event that your holiday cannot be provided as a result of our insolvency. Please go to www.abta.com for a copy of the guide to ABTA’s scheme of Financial Protection.

ABTA and ABTA members help holidaymakers to get the most from their travel and assist them when things do not go according to plan. We are obliged to maintain a high standard of service to you by ABTA’s Code of Conduct.

For further information about ABTA, the Code of Conduct and the arbitration scheme available to you if you have a complaint (see clause 14), contact ABTA at 30 Park Street, London, SE1 9EQ or see www.abta.com.

3. Your Holiday Price

Please note, changes and errors occasionally occur. You must check the price of your chosen holiday at the time of booking.

The cost of your travel arrangements was calculated using known costs and exchange rates of £1 to 146 JPY on 11 Jul 2017.

We reserve the right to increase and correct errors in advertised prices at any time before your holiday is confirmed. We will advise you of any error which we are aware of and inform the new applicable price at the time of booking.

Once the price of your chosen holiday has been confirmed at the time of booking, then subject to the correction of errors, we will only increase the price in the following circumstances. Price increases after booking will be passed on by way of a surcharge. A surcharge will be payable, subject to the conditions set out in this clause, in the event of any change in our transportation costs or in dues, taxes or fees payable for services such as landing taxes or embarkation or disembarkation fees at ports or airports or in the any fluctuation in exchange rates which have been used to calculate the cost of your holiday.

Even in the above cases, we will only levy a surcharge if the amount of any increase in our costs exceeds 2% of the total cost of your holiday (excluding insurance premiums and any amendment charges). If any surcharge is greater than 10% of the cost of your holiday (excluding insurance premiums and any amendment charges), you will be entitled to cancel your booking and receive a full refund of all monies you have paid to us (except for any amendment charges) or alternatively purchase another holiday from

us as referred to in clause 9 “If we change or cancel your holiday”. Although insurance (where purchased through us) does not form part of your contract with us or of any “package”, we will consider an appropriate refund of any insurance premiums you have paid us if you can show you are unable to use/reuse or transfer your policy in the event of cancellation or purchase of an alternative holiday.

Where applicable, you have 14 days from the issue date printed on the surcharge invoice to tell us if you want to choose option (b) or (c) as set out in clause 9 below. If you do not tell us that you wish to choose either of these options within this period of time, we are entitled to assume that you do not wish to do so and will pay the surcharge. Any surcharge must be paid with the balance of the cost of the holiday or within 14 days of the issue date printed on the surcharge invoice, whichever is the later.

Please note that arrangements are not always purchased in local currency and some apparent changes have no impact on the price of your holiday due to contractual and other protection in place.

4.Payment

In order to confirm your chosen holiday, a deposit of at least £350.00 per person (or full payment if booking within 60 days of departure) must be paid at the time of booking. In some cases the amount of deposit may be higher: where, for example, we need to pre-purchase flights tickets, accommodation or other services. If you wish to purchase the insurance policy we offer, all applicable premiums must also be paid at the time of booking (you must be insured – please see clause 6 on the subject of insurance).

The balance of the holiday cost must be received by us not less than 60 days prior to departure. This date will be shown on the confirmation invoice. Reminders are not sent.

Our preferred method of deposit payment is by bank debit card or credit card. Balance payment may be made by cash, bank debit card, credit card or cheque (providing there is time to clear it to meet the payment schedule shown above - you should allow 5 working days for clearance from the time we receive it). No charge will be made for deposits and balances paid by Debit Card/Switch/Delta. However, in line with most major operators, we will make a charge of 2% for deposits and balances paid by credit card. If we do not receive all payments due (including any surcharge where applicable) in full and on time, we are entitled to assume that you wish to cancel your booking. In this case, we will be entitled to keep all deposits paid or due at that date.

Except for flight inclusive bookings, all monies you pay to one of our authorised travel agents for your holiday with us will be held by the agent on your behalf until a contract between us comes into existence. After that point, your agent will hold the monies on our behalf until they are paid to us. For flight inclusive bookings, all monies paid to any authorised travel agent of ours for your holiday with us will be held on behalf of and for the benefit of the Trustees of the Air Travel Trust subject to the travel agent’s obligation to pay such monies to us in accordance with our trading terms unless we fail. In the unlikely event of our financial failure, all monies then held by the travel agent or subsequently paid by you to the travel agent will be held by the agent on behalf of and for the benefit of the Trustees of the Air Travel Trust without any obligation on the agent to pay such monies to us.

5. Travel documents and visas

A Passport with a minimum of six months validity from the intended date of Travel, and contain a minimum of two blank visa pages, is required for travel for all countries in our programme. Visa fees, where required, are included for UK and EU passport holders in all fully inclusive group packages with the exception of holidays to Laos. Non UK passport holders will incur Visa fees at their own expense. Failure to forward passports to Wendy Wu Tours by the date specified on your confirmation invoice so that we can process your Visa application may incur further charges to cover expedited Visa processing. Unless otherwise requested your passport will be returned approximately 4 weeks after receipt by Royal Mail Special Delivery. A charge will be made for faster processing. It is your responsibility to ensure the visa issued to you is correct. Whilst we include the cost of the standard visa application service in your tour price (for UK and EU passport holders), we will pass on any additional charges incurred for non-standard visa processing, or where visa charges are increased following publication of the brochure. Should your visa application be refused for any reason and you wish to cancel your booking the cancellation charges under clause 8 will apply. We make no promises that your Visa application will be successful and we cannot accept bookings conditional on the issuing of a Visa.

Responsibility for documentation accuracy, passport validity and dispatch of documents rests with you. Wendy Wu Tours accepts no responsibility in this regard. Passports and applications should be sent by tracked delivery or in person. We accept no responsibility for passports lost in the post.

It is the responsibility of each passenger to ensure that you carry all necessary passport, visa and other travel documentation as required by the country you are visiting, and that all documents are in date and valid. We do not accept responsibility if you cannot travel because you have not complied with any passport, visa or immigration requirements for any part of your holiday. If failure to have any necessary travel or other documents results in fines, surcharges or other financial penalty being imposed on us, you will be responsible for reimbursing us in full.

6. Travel Insurance, Health and Safety

It is a condition of booking with us that you take out suitable travel insurance covering at least circumstances leading to the cancellation of your booking and providing sufficient medical cover for illness or injury and repatriation while overseas. You must provide us with the name of your insurers and their 24 hour emergency contact number when you book or as soon as possible thereafter. Wendy Wu Tours will not be liable for any costs incurred by you due to your failure to take out suitable travel insurance from the date of booking. You will indemnify Wendy Wu Tours in respect of any assistance or payment made by us in these circumstances.

Details of any compulsory health requirements applicable to British citizens for your holiday are available from the websites listed below. It is your responsibility to ensure you are aware of all recommended vaccinations and health precautions in good time before departure. Details are available from your GP surgery and from the National Travel Health Network and www.nathnac.org. Information on health can be found at www.nhs.uk and www.fitfortravel.nhs.uk. For holidays in the EU / EEA you should obtain an EHIC (European Health Insurance Card) prior to departure from the Department of Health (www.dh.gov.uk). Health requirements and recommendations may change and you must check the up to date position in good time before departure. The Foreign and Commonwealth Office publishes regularly updated travel information on its website www.gov.uk/foreign-travel-advice which you are recommended to consult before booking and in good time before departure.

7. If you wish to change your booking

If, after our confirmation invoice has been issued, you wish to change your travel arrangements in any way, we will endeavour to make these changes, but it may not always be possible. Any request for changes to be made must be from the lead name on the booking or your Travel Agent. You will be asked to pay an administration charge as set out below per person and any further cost we incur together with any costs or charges incurred or imposed by any of our suppliers in making this alteration. Examples include:

- Minor amendments to the tour booked - £20
- Minor amendments made within 30 days of departure - £30
- Transferring between tours or changing departure date - £50
- Transferring between tours or changing departure date within 60 days of departure is not permitted and cancellation fees will apply
- Reissue of airline tickets - £50 plus any non-refundable costs of the cancelled ticket and any additional costs of the new ticket
- Once a booking is confirmed no name transfers are permitted within 60 days of departure and will be regarded as a cancellation and cancellation fees apply

It is important to note that some arrangements such as certain types of air tickets cannot be changed after a booking has been made as they are sold as part of your fixed package: any change will be treated as a cancellation in which case cancellation charges will apply.

8. If you wish to cancel your booking

Because we start to incur costs in relation to your arrangements from the time we confirm your booking, if you cancel we have to make a charge and the nearer to your departure date you cancel, the higher the charge will be. If you wish to cancel a confirmed booking you must do so by writing to our head office. Cancellation takes effect from the day we receive your letter. Cancellation charges are shown in the table below and will be payable immediately on cancellation. Where the cancellation charge is shown as a percentage, this is calculated on the basis of the total cost payable by the person(s) cancelling excluding insurance premiums and amendment charges. Insurance premiums and amendment charges are not refundable in the event of cancellation:

61 or more days	Retention of deposit
60 – 42 days	30% including deposit
41 – 28 days	60% including deposit
27 – 15 days	90% including deposit
14 days or less	100% including deposit

Depending on the reason for cancellation, you may be able to reclaim these cancellation charges (less any applicable excess) under the terms of your insurance policy. Claims must be made directly to the insurance company concerned and we have no liability in these circumstances.

9. If we change or cancel your holiday

We start planning the holidays we offer many months in advance. Occasionally, we have to make changes to and correct errors in brochure and other details both before and after bookings have been confirmed and cancel confirmed bookings. Whilst we always endeavour to avoid changes and cancellations, we must reserve the right to do so. The right is also reserved to change airline, aircraft types and vessels scheduled for any specific departure. Even after we have confirmed your booking we may have to make alterations to confirmed arrangements. Most such alterations will be minor and of little effect on your overall arrangements and while we will do our best to notify you of any such minor change before your departure, we will have no other liability to you. Occasionally we may have to make a significant change to your confirmed arrangements.

Significant changes include but are not limited to the following (which are illustrative):

- Change of UK departure airport. (A change from one London airport to another is not considered a major change. London airports are Heathrow, Gatwick, Stansted, Luton and London City)
- Change of your time of departure or return by more than 12 hours
- Change of resort
- Change of holiday accommodation to accommodation of a lower official rating.

If we have to make a significant change, we will notify you as quickly as possible and offer you the following options:

- (a) (for significant changes) accepting the changed arrangements or
- (b) purchasing an alternative holiday from us, of a similar standard to that originally booked if available. We will offer you at least one alternative holiday of equivalent or higher standard for which you will not be asked to pay any more than the price of the original holiday. If this holiday is in fact cheaper than the original one, we will refund the price difference. If you do not wish to accept the holiday we specifically offer you, you may choose any of our other then available holidays. You must pay the applicable price of any such holiday. This will mean your paying more if it is more expensive or receiving a refund if it is cheaper or
- (c)cancelling or accepting the cancellation in which case you will receive a full refund of all monies you have paid to us

In addition, if you choose (a) or (b) above, and the change is not due to “force majeure” (see clause 10 “Force Majeure”), you will receive as compensation a credit towards the cost of your arrangements, or any alternative selected, of the amount shown in Scale A below. If you choose (c) we will pay you compensation of the amount shown in Scale B below. In all cases we will have no liability for any other or greater compensation, or for expenses or losses incurred as a result of any change.

Period before departure date notification given by us	Credit/Compensation per fare paying passenger (excluding children)	
	Scale A	Scale B
0 – 7 days	£50	£25
8 – 14 days	£40	£20
15 – 28 days	£30	£15
29 – 42 days	£20	£10
43 – 56 days	£10	£5

No compensation will be payable and the above options will not be available if we cancel as a result of your failure to comply with any requirement of these booking conditions entitling us to cancel (such as paying on time) or where a change is a minor one.

10. Our liability to you

(1) We will take reasonable care to ensure that the holiday arrangements we have agreed to make, perform or provide as part of our contract with you are made, performed or provided with reasonable skill and care. This means that, subject to these booking conditions, we may accept responsibility if, for example, you suffer death or personal injury or your contracted holiday arrangements are not provided as promised or prove deficient as a result solely of the failure of ourselves, our employees, agents or suppliers to use reasonable skill and care in making, performing or providing, as applicable, your contracted holiday arrangements. Please note, it is your responsibility to show that reasonable skill and care has not been used and you have suffered loss as a result if you wish to make a claim against us. In addition, we will only be responsible for what our employees, agents and suppliers do or do not do if they were at the time acting within the course of their employment (for employees) or carrying out work we had asked them to do (for agents and suppliers).

(2) We will not be responsible for any injury, illness, death, loss (for example loss of enjoyment), damage, expense, cost or other sum or claim of any description whatsoever which results from any of the following:

- the act(s) and/or omission(s) of the person(s) affected or any member(s) of their party or
- the act(s) and/or omission(s) of a third party not connected with the provision of your holiday and which were unforeseeable or unavoidable or
- “force majeure” as defined in clause 11 below

(3) Please note, we cannot accept responsibility for any services which do not form part of our contract. This includes, for example, any additional services or facilities which your hotel or any other supplier agrees to provide for you where the services or facilities are not advertised by us and we have not agreed to arrange them as part of our contract including any excursion you purchase in resort. Please also see clause 12 “Excursions”. In addition, regardless of any wording used by us on our website, in any advertising material or elsewhere, we only promise to use reasonable skill and care in performing our contractual obligation as set out above and we do not have any greater or different liability to you.

(4) The promises we make to you about the services we have agreed to provide or arrange as part of our contract – and the laws, regulations and relevant standards of the country in which your claim or complaint occurred – will be used as the basis for deciding whether the services in question had been properly provided. If the particular services which gave rise to the claim or complaint complied with local laws and regulations applicable to those services at the time, the services will be treated as having been properly provided. This will be the case even if the services did not comply with the laws and regulations of the UK which would have applied had those services been provided in the UK. The exception to this is where the claim or complaint concerns the absence of a safety feature which might lead a reasonable holiday maker to refuse to take the holiday in question. Please note, however, our obligation is to exercise reasonable skill and care as referred to in clause 10(1). We do not make any representation or commitment that all services will comply with applicable local laws and regulations and failure to comply does not automatically mean we have not exercised reasonable skill and care.

(5) As set out in these booking conditions, we limit the maximum amount we may have to pay you for any claims you may make against us.

Where we are found liable for loss of and/or damage to any luggage or personal possessions (including money), the maximum amount we will have to pay you is £1,500 per person affected unless a different limitation applies to your claim under this clause or clause 10(6) below. You must ensure you have appropriate travel insurance to protect your personal belongings.

For all other claims which do not involve death or personal injury, if we are found liable to you on any basis the maximum amount we will have to pay you is twice the price (excluding insurance premiums and amendment charges) paid by or on behalf of the person(s) affected in total unless a lower limitation applies to your claim under clause 10(6) below. This maximum amount will only be payable where everything has gone wrong and you have not received any benefit at all from your holiday.

(6) Where any claim or part of a claim (including those involving death or personal injury) concerns or is based on any travel arrangements (including the process of getting on and/or off the transport concerned) provided by any air, sea, rail or road carrier to which any international convention or regulation applies, the maximum amount of compensation we will have to pay you will be limited. The most we will have to pay you for that claim or that part of a claim if we are found liable to you on any basis is the most the carrier concerned would have to pay under the international convention or regulation which applies to the travel arrangements in question (for example, the Warsaw Convention as amended or unamended and the Montreal Convention for international travel by air and/or for airlines with an operating licence granted by an EU country, the EC Regulation on Air Carrier Liability No 889/2002 for national and international travel by air, the Athens Convention for international travel by sea and COTIF, the Convention on International Travel by Rail). Where a carrier would not be obliged to make any payment to you under the applicable international convention or regulation in respect of a claim or part of a claim, we similarly are not obliged to make a payment to you for that claim or part of the claim. When making any payment, we are entitled to deduct any money which you have received or are entitled to receive from the carrier for the claim in question. Copies of the applicable international conventions and regulations are available from us on request.

(7) Please note, we cannot accept any liability for any damage, loss, expense or other sum(s) of any description (1) which on the basis of the information given to us by you concerning your booking prior to our accepting it, we could not have foreseen you would suffer or incur if we breached our contract with you or (2) which did not result from any breach of contract or other fault by ourselves or our employees or, where we are responsible for them, our suppliers. Additionally we cannot accept liability for any business losses including self employed loss of earnings.

11. Force Majeure

Except where otherwise expressly stated in these booking conditions, we regret we will not accept liability or pay any compensation where the performance or prompt performance of our obligations under our contract with you is prevented or affected by you or otherwise suffer any damage, loss or expense of any nature as a result of “force majeure”. In these booking conditions, “force majeure” means any event, or the consequences of which, we or the supplier of the service(s) in question could not, even with all due care, foresee or avoid. Such events are not limited to but may include actual or threatened war, riot, civil strife, terrorist activity, industrial dispute, natural or nuclear disaster, adverse weather conditions, volcanic activity, seismic activity, fire, pandemics, epidemics and all similar events, natural or man made, outside our control or that of our agents or suppliers.

12. Excursions

We may provide you with information (before departure and/or when you are on holiday) about activities and excursions which are available in the area you are visiting. We have no involvement in any such activities or excursions which are neither run, supervised nor controlled in any way by us. They are provided by local operators or other third parties who are entirely independent of us. They do not form any part of your contract with us even where we suggest particular operators/other third parties and/or assist you in booking such activities or excursions in any way. We cannot accept any liability on any basis in relation to such activities or excursions and the acceptance of liability contained in clause 10(1) of our booking conditions will not apply to them. We do not however exclude liability for the negligence of ourselves or our employees resulting in your death or personal injury. We cannot guarantee accuracy at all times of information given in relation to such activities or excursions or about the area you are visiting generally or that any particular excursion or activity which does not form part of our contract will take place as these services are not under our control. If you feel that any of the activities or excursions referred to in our brochure, on our website and in our other advertising material which are not part of our contract are vital to the enjoyment of your holiday, write to us immediately and we will tell you the latest known situation. If we become aware of any material alterations to area information and/or such outside activities or excursions which can reasonably be expected to affect your decision to book a holiday with us, we will pass on this information at the time of booking.

13. Complaint procedure

If you have a problem during your holiday concerning any service provided as part of the arrangements we have confirmed, you must inform our National Escort or Local Guide (or, if none available, with our local agent or hotel manager) immediately to enable them to try to resolve the matter. Any notification must be put in writing and given to our representative / agent and the supplier as soon as possible. Our emergency number is manned 24 hours a day, seven days a week and is 07984 041625. Until we know about a complaint or problem, we cannot begin to resolve it. If you remain dissatisfied, however, you must write to us within 28 days of your return to the UK giving your booking reference and full details of your complaint. Only the lead name should write to us. If you fail to follow this simple complaints procedure, your right to claim any compensation you may otherwise have been entitled to may be affected or even lost as a result.

14. Arbitration

Disputes arising out of, or in connection with your booking which cannot be amicably settled may be referred to arbitration if you so wish under a special scheme arranged by ABTA Ltd and administered independently. The scheme provides for a simple and inexpensive method of arbitration on documents alone with restricted liability on the customer in respect of costs. Full details will be provided on request or can be obtained from the ABTA website (www.abta.com). The scheme does not apply to claims for an amount greater than £5,000 per person. There is also a limit of £25,000 per booking. Neither does it apply to claims which are solely in respect of physical injury or illness or their consequences. The scheme can however deal with compensation claims which include an element of minor injury or illness subject to a limit of £1,500 on the amount the arbitrator can award per person in respect of this element. Your application for arbitration and other required documents must be received by ABTA within 18 months of your return from the holiday. Outside this time limit arbitration under the scheme may still be available if we agree, although the ABTA Code does not require such agreement. For injury and illness claims, you can request the ABTA mediation procedure and we have the option to agree to this. Where we act as agent, please bear in mind that your contract is with the supplier of the arrangements concerned. Unless the supplier is also a member of ABTA, only disputes relating to our actions as agent can be dealt with by the arbitration scheme or mediation procedure and not complaints about the arrangements themselves or the acts / omissions of the supplier.

15.Conditions of Suppliers

Many of the services which make up your holiday are provided by independent suppliers. Those suppliers provide these services in accordance with their own terms and conditions. Some of these terms and conditions may limit or exclude the supplier’s liability to you, usually in accordance with applicable international conventions (see clause 10(4)). Copies of the relevant parts of these terms and conditions and of the international conventions are available on request from ourselves or the supplier concerned.

16. Behaviour

When you book a Holiday with Wendy Wu Tours Limited you accept responsibility for the proper conduct for yourself and your party whilst on Holiday. If we or any other person in authority is of the reasonable opinion that you or any member of your party is behaving in such a way as to cause or be likely to cause danger or upset to any other person or damage to property, we will be entitled to terminate the holiday of the person(s) concerned. The person(s) concerned will be required to leave the accommodation or other service and we will have no further responsibility to them including any return travel arrangements. No refunds will be made and we will not pay any expenses or costs incurred as a result of the termination. You will be responsible for making full payment for any damage or loss caused by you or any member of your party during your time away. Payment must be paid directly at the time to the service supplier concerned. If the actual cost of the loss or damage exceeds the amount paid where estimated, you must pay the difference once known. If the actual cost is less than the amount paid, the difference will be refunded. You will also be responsible for meeting any claims subsequently made against us and all costs incurred by us (including our own and the other party’s full legal costs) as a result of your actions.

17. Special Requests

If you have any special requests, you must inform us prior to booking. Although we will endeavour to pass any reasonable requests on to the relevant supplier, we regret we cannot guarantee any request will be met. Failure to meet any special request will not be a breach of contract on our part. Confirmation that a special request has been noted or passed on to the supplier or the inclusion of the special request on your confirmation invoice or any other documentation is not confirmation that the request will be met. Unless and until specifically confirmed, all special requests are subject to availability. Unless you receive written confirmation from the supplier that a special request will be complied with, you must assume that it will not be. The responsibility for providing the special request lies solely with the supplier and not with Wendy Wu Tours.

We regret we cannot accept any conditional bookings, i.e. any booking which is specified to be conditional on the fulfillment of a particular request. All such bookings will be treated as “standard” bookings subject to the above provisions on special requests.

18. Fitness, Medical Conditions & Disabilities

Please note that China and the surrounding regions is a vast area with varying terrain (including steps, steep hills and uneven walkways) which can be difficult to negotiate. An indicated “tour pace” is outlined clearly in this brochure and in the tour specific Tour Dossiers. It is your sole responsibility to ensure that you are sufficiently fit and well to negotiate these areas, without any adverse effect on the overall group or tour operation. You should check that your proposed areas of travel are suitable dependant on your own

health, including any medical condition and/or disability that you may have.

If you or any member of your party has any medical condition or disability which may affect your holiday or has any special requirements as a result of any medical condition or disability (including any which affect the booking process), please tell us before you confirm your booking so that we can assist you in considering the suitability of the arrangements and/or making the booking. In any event, you must give us full details in writing at the time of booking and whenever any change in the condition or disability occurs. You must also promptly advise us if any medical condition or disability which may affect your holiday develops after your booking has been confirmed. Should this condition not be met, Wendy Wu Tours reserves the right to terminate the holiday of the person(s) involved, as described in section 16.

19. Flights

In accordance with EU Directive (EC) No 2111/2005 Article 9, we are required to bring to your attention the existence of a “Community list” which contains details of air carriers who are subject to an operating ban within the EU. The Community list is available for inspection at http://ec.europa.eu/transport/air-ban/list_en.htm.

In accordance with EU Regulations we are required to advise you of the actual carrier(s) (or, if the actual carrier(s) is not known, the likely carrier(s) that will operate your flight(s) at the time of booking. Where we are only able to inform you of the likely carrier(s) at the time of booking, we shall inform you of the identity of the actual carrier(s) as soon as we become aware of this. Any change to the operating carrier(s) after your booking has been confirmed will be notified to you as soon as possible.

If the carrier with whom you have a confirmed reservation becomes subject to an operating ban as above as a result of which we/ the carrier are unable to offer you a suitable alternative the provisions of clause 9 “If we change or cancel your holiday” will apply. We are not always in a position at the time of booking to confirm the flight timings which will be used in connection with your flight. The flight timings shown in our brochure, on our website and/or detailed on your confirmation invoice are for guidance only and are subject to alteration and confirmation. Flight timings are outside our control. They are set by airlines and are subject to various factors including air traffic control restrictions, weather conditions, potential technical problems and the ability of passengers to check in on time.

Specific instructions relating to departure and travel arrangements will be sent with your air or other travel tickets approximately 2 weeks before departure. You must accordingly check your tickets very carefully immediately on receipt to ensure you have the correct flight times. It is possible that flight times may be changed even after tickets have been despatched - we will contact you as soon as possible if this occurs.

Any change in the identity of the carrier, flight timings, and/or aircraft type (if advised) will not entitle you to cancel or change to other arrangements without paying our normal charges except where specified in these conditions.

20. Delay and Denied Boarding Regulations

In the event of any flight delay or cancellation at your UK or overseas point of departure, the airline is responsible for providing such assistance as is legally required by the Denied Boarding Regulations (see below). The ferry, tunnel or rail operator is similarly responsible in relation to any delayed or cancelled sea crossing or international rail departure. Except where otherwise stated in our brochure or on our website, we cannot provide any assistance in such circumstances other than information and advice to the extent we are in a position to do so. Any airline concerned may however provide refreshments etc.

We cannot accept liability for any delay which is due to any of the reasons set out in clause 10(2) of these Booking Conditions (which includes the behaviour of any passenger(s) on the flight who, for example, fails to check in or board on time). In addition, we will not be liable for any delay unless it has a significant effect on your holiday arrangements.

If your flight is cancelled or delayed, your flight ticket is downgraded or boarding is denied by your airline, depending on the circumstances, the airline may be required to pay you compensation, refund the cost of your flight and/or provide you with accommodation and/or refreshments under EC Regulation No 261/2004 - the Denied Boarding Regulations 2004. Where applicable, you must pursue the airline for the compensation or other payment due to you. All sums you receive or are entitled to receive from the airline concerned by virtue of these Regulations represent the full amount of your entitlement to compensation or any other payment arising from such cancellation, delay, downgrading or denied boarding. This includes any disappointment, distress, inconvenience or effect on any other arrangements. The fact a delay may entitle you to cancel your flight does not automatically entitle you to cancel any other arrangements even where those arrangements have been made in conjunction with your flight. We have no liability to make any payment to you in relation to the Denied Boarding Regulations or in respect of any flight cancellation or delay, downgrading of any flight ticket or denial of any boarding as the full amount of your entitlement to any compensation or other payment (as dealt with above) is covered by the airline’s obligations under the Denied Boarding Regulations. If, for any reason, we make any payment to you or a third party which the airline is responsible for in accordance with the Denied Boarding Regulations, you must, when requested, assign to us the rights you have or had to claim the payment in question from the airline. If your airline does not comply with these rules you may complain to the Civil Aviation Authority on 020 7453 6888 or by e-mail to passengercomplaints@caa.co.uk or see www.caa.co.uk - referring your complaint to the CAA.

Data protection

In order to process your booking and meet your requirements, we must pass your personal details on to the relevant suppliers of your travel arrangements. We would also like to hold your information (including any email address), where collected by us, for our own future marketing purposes (for example, to inform you of promotional/ competition offers or to send you our brochure).

Wendy Wu Tours Ltd. may wish

AIRLINES

A good flight starts your holiday off right and ends it on a high. Below you'll find information on our favourites airlines but we work with everyone so if your choice isn't here, you just have to ask. With such a range of airlines and options to upgrade, you can be sure you will travel in comfort and style.

BRITISH AIRWAYS Preferred Partner

Having enjoyed an excellent working relationship with British Airways for many years, we are delighted to be a British Airways Preferred Partner.

For you, it means:

- We get access to the most competitive fares
- We can offer high levels of service to enhance your travel experience
- You can fly directly from London Heathrow to Tokyo and onward connections are available to Osaka.
- You can catch connecting flights from many regional airports via London.
- You get to travel in one of British Airways four travel classes, which suit every taste and budget. Choose between World Traveller, World Traveller Plus, Club World and First.



UPGRADE & TRAVEL IN STYLE

Let us upgrade your flight to Japan so you can breeze through the airport, fly in comfort and arrive fresh and raring to go. Whether you're after a little extra in Premium or all out luxury in First, just say the word and we'll let you know how much it will cost, for whichever airline you prefer.



Board in Birmingham, Glasgow, London Gatwick and Heathrow, Manchester and Newcastle, flying via Dubai.



Seats in Economy have a comfortable pitch of 32-34".



Many Emirates aircrafts have free wi-fi onboard to keep you connected.



Enjoy a range of films on the award-winning entertainment system.



Head east five times daily from Heathrow daily from Manchester and Gatwick, via Hong Kong.



Connects you to the major cities in Japan getting you closer, quicker.



Has a five-star rating from air travel guide and industry experts Skytrax.



Offers the perfect opportunity to stopover in Cathay's hub city, Hong Kong.



Departing from 16 Regional airports. Including Belfast, Bristol, Inverness and Norwich!



Part of Europe's largest airline group with Air France.



Introducing New World Business Class. Truly feel at home on board.



There is an option to order your meal a la carte, as long as you do it before you fly.



Daily service from Heathrow via Seoul to many destinations in Japan. A truly five-star airline where, the level of service is unsurpassed.



Has held the prestigious five-star Skytrax status since 2010.



Board the new Airbus A350 from Heathrow and sample their new generation Smartium seats.



Smartium Economy passengers have complimentary lounge access in Seoul.

BOOKING YOUR TRIP

Booking your holiday should be simple and straightforward, so Wendy Wu Tours is committed to supporting you through every element of the booking process right through until after your holiday has finished.

1. CHOOSE YOUR EXPERIENCE

Get a taste of the tours in this brochure. Visit our website for more details, including interactive maps, destination information, photos, videos, reviews, updates and detailed tour dossiers.

Choose the style of trip that suits you:

- **Fully Inclusive Group Tours**
- **Our exciting Immerse Yourself Tours**
- **Flexible Private Tours**
- **Bespoke Tailormade Holidays**

Still not sure? Contact our experienced Travel Consultants to talk through your options.

2. CHECK AVAILABILITY

Speak to our expert Travel Consultants, or your preferred Travel Agent, and we will check the tour availability, find the best flights and confirm your full package price.

3. BOOKING & DEPOSIT

Group Tour places can usually be confirmed immediately upon payment of a deposit of £350 per person. Private Touring arrangements can usually be confirmed within 48 hours.

Once your tour is complete, we will send you confirmation by email. By making a booking you are confirming that you have read the tour dossier, are fit enough to fully participate in your tour, will travel with adequate travel insurance and agree to the booking conditions at the back of the brochure.

4. FINAL PAYMENT

The balance of your payment is due 60 days before departure and you will be issued with your travel tickets and documentation approximately two weeks before travel.

REGIONAL FLIGHTS AND UPGRADES

Enjoy the freedom to choose who you fly with and where you fly from. We work with most major airlines and offer flights from regional airports across the UK – often with no additional supplement.

All of our tour prices are based on flying Economy Class, but if you fancy a little bit of luxury and lots more legroom, we have specially negotiated rates on Premium Economy and Business Class fares. Depending on your budget you can upgrade one way or for the entire return trip.

ADD FINISHING TOUCHES

We want to make your holiday enjoyable and stress-free and can help you book:

- ✓ **Airport Lounges** from £25
- ✓ **Airport Parking** from £6 per day
- ✓ **Airport Hotels** from £40 per night
- ✓ **Travel Insurance** Contact us for details of our recommended policy

Please speak to our experienced Travel Consultants who will happily provide advice and arrange these for you.

THANK YOU FOR YOUR LOYALTY

Many of our customers enjoy the Wendy Wu Tours experience so much that they travel with us again and again. What's more, they also recommend us to their friends and family. We really appreciate this loyalty and want to reward you for it.

- **Become a Wendy Wu Tours Champion**
Recommend us to your friends and we'll send you a hamper as a thank you for the first booking we receive. Plus for every subsequent booking, we'll send you £50 worth of shopping vouchers.

- **Loyalty Discount**
When you book your second holiday, we'll give you a £100pp discount.

- **Welcome Home Discount**
When you book another tour with us within four-weeks of returning home, we'll give you a £200pp discount.

- **Become a Wendy Wu Tours VIP**
Book three trips or more and we'll give you £250pp off the total cost of your holiday.

Conditions apply. Rewards and discounts cannot be combined. Refer to our website for full details.



STOPOVERS & EXTENSIONS

Why not break your trip to the Far East with a stopover – most airlines won't charge you any extra for stopping over en route. We are able to book your hotel, transfers and touring and add it to your trip. World class destinations such as Dubai and Hong Kong are just a few of the options available between Japan and the UK. See pages 40-43 for inspiration. If you want to stay longer in Tokyo, Osaka or wherever your trip starts or finishes, we are able to add extra nights onto your trip for a small supplement.



TOP REASONS TO CHOOSE WENDY WU TOURS

- Over 20 years' experience
- Unrivalled knowledge and expertise
- Comprehensive range of group, private and tailor-made holidays
- Depart from many regional UK airports
- Fully inclusive prices with no hidden extras
- Quality hotels and comfortable transport
- Outstanding customer satisfaction
- Award-winning guides
- Specialist advice from our experienced consultants
- Authentic dining and delicious local cuisine
- Hassle-free visa service included
- Safe and secure with ABTA, ATOL & IATA



WE OFFER TOURS AND TAILORMADE TRAVEL THROUGHOUT ASIA & BEYOND

- China • Japan • Vietnam • Cambodia • Laos • Thailand • Burma • Borneo • India • Nepal • Bhutan
- Sri Lanka • Central Asia • Mongolia • Taiwan • South Korea • Indonesia • South America • South Africa



To book call **0800 988 8226** or see your preferred Travel Agent
To see our full range of holidays in Asia visit wendywutours.co.uk



Wendy Wu Tours Limited,
Ground Floor, Cottons Centre,
Cottons Lane, 47-49 Tooley St,
London, SE1 2QG

Tel: 0800 988 8226
info@wendywutours.co.uk
wendywutours.co.uk

Opening Hours:
Mon-Fri 9:00am – 5:30pm
Sat-Sun 10:00am – 4:00pm

